

INTERMEDIATE
SKILL

Cheerful Pine

Designed by Wendy Sheppard
Featuring *Holiday Greetings* by Jean Plout

SIZE: 70" x 88"

FREE
PROJECT



THIS IS A DIGITAL REPRESENTATION OF THE QUILT TOP, FABRIC MAY VARY.

PLEASE NOTE: BEFORE MAKING YOUR PROJECT, CHECK FOR ANY PATTERN UPDATES AT WINDHAMFABRICS.COM'S FREE PROJECTS SECTION.



Cheerful Pine

PROJECT DISCLAIMER: Every effort has been made to ensure that all projects are error free. All the information is presented in good faith, however, no warranty can be given nor results guaranteed. Therefore, we assume no responsibility nor damages that may occur when referring to this pattern. When errors are brought to our attention, we make every effort to correct and post a revision as soon as possible. We suggest you check windhamfabrics.com for pattern updates and to test the pattern prior to making the project. Test templates first, before cutting all the pieces. Free projects are not for resale.

WOF = WIDTH OF FABRIC

KEY	FABRIC	SKU	YD	CUTTING INSTRUCTIONS
A		FROM PALETTE: 37098-38 Everglade	2-1/2	Pieced Blocks (3) 3-1/2" x WOF strips. Subcut (12) 3-1/2" x 4", (12) 2" x 3-1/2" and (24) 1-1/2" x 3-1/2" rectangles. Sashing Blocks and Cornerstones (34) 1-1/2" x WOF strips. Reserve for strip piecing. Inner Border 1 (7) 2-1/2" x WOF strips. Piece strips via short ends and subcut (2) 2-1/2" x 75-1/2" and 2-1/2" x 61-1/2" strips.
B		FROM PALETTE: 37098-45 Lemongrass	1/3	Pieced Blocks (2) 4" x WOF strips. Subcut (24) 3-1/2" x 4" rectangles.
C		53604-2 Ivory	1/3	Pieced Blocks (2) 3-1/2" x WOF strips. Subcut (24) 3-1/2" squares.
D		53604-3 Black	1/3	Pieced Blocks (2) 3-1/2" x WOF strips. Subcut (24) 3-1/2" squares.
E		53605-2 Ivory	1/4	Pieced Blocks (1) 3-1/2" x WOF strip. Subcut (12) 3-1/2" squares.
F		53605-4 Berry	1/4	Pieced Blocks (1) 3-1/2" x WOF strip. Subcut (12) 3-1/2" squares.
G		53606-3 Black	1/4	Pieced Blocks (1) 4" x WOF strip. Subcut (12) 3-1/2" x 4" rectangles.
H		53607-5 Ruby	1/3	Pieced Blocks (2) 3-1/2" x WOF strips. Subcut (12) 3-1/2" squares and (12) 2" x 3-1/2" rectangles.
I		53607-7 Forest	1/2	Pieced Blocks (3) 3-1/2" x WOF strips. Subcut (36) 3-1/2" squares.
J		53608-3 Black	1/4	Pieced Blocks (1) 3-1/2" x WOF strip. Subcut (12) 3-1/2" squares.



Cheerful Pine

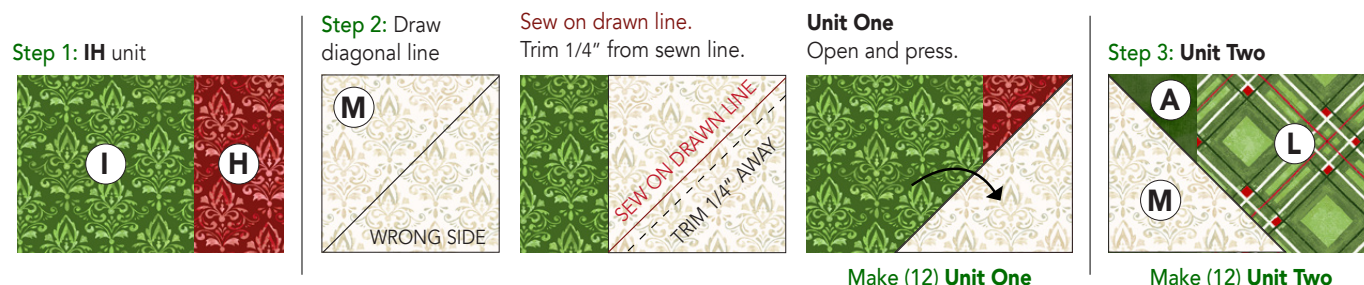
KEY	FABRIC	SKU	YD	CUTTING INSTRUCTIONS
K		53608-5 Ruby	1-3/8	Outer Border (8) 4" x WOF strips. Piece strips via short ends and subcut (2) 4" x 81-1/2" and (2) 4" x 70-1/2" strips. Pieced Blocks (1) 4" x WOF strip. Subcut (12) 3-1/2" x 4" rectangles. (2) 3-1/2" x WOF strips. Subcut (24) 3-1/2" squares.
L		53608-7 Forest	1/3	Pieced Blocks (1) 4" x WOF strip. Subcut (12) 3-1/2" x 4" rectangles. (1) 3-1/2" x WOF strips. Subcut (12) 3-1/2" squares.
M		53607-2 Ivory	2-5/8	Pieced Blocks (7) 3-1/2" x WOF strips. Subcut (36) 2-1/2" x 3-1/2" and (12) 1-1/2" x 3-1/2" rectangles and (48) 3-1/2" squares. Sashing Blocks and Cornerstones (20) 1-1/2" x WOF strips. Reserve for strip piecing. Inner Border 2 (9) 1-1/2" x WOF strips. Piece strips via short ends and subcut (2) 1-1/2" x 79-1/2" and (2) 1-1/2" x 63-1/2" strips.
N		53607-3 Black	3/4	Binding (9) 2-1/4" x WOF strips. Piece strips via short ends.
		Backing	5-1/2	Batting 78" x 96" piece.

PINE TREE BLOCK ASSEMBLY *Note block is assembled in five rows.*

1. IH Unit: Sew together (1) **I** 3-1/2" square and (1) **H** 2" x 3-1/2" rectangle as shown. Set aside.

2. Unit One: Draw a diagonal line on the wrong side of (1) **M** 3-1/2" square. Place square, right sides together, at the bottom right corner **IH** unit. Sew on drawn line. Trim 1/4" away from sewn line. Open and press to reveal corner triangle. Make (12) Unit One.

3. Unit Two: Repeat steps 1 and 2 to make Unit Two, using **L** and **M** 3-1/2" squares and **A** 2" x 3-1/2 rectangle. *Note Unit Two is a mirror-image from Unit One.* Make (12) Unit Two.





Cheerful Pine

4. Row 1: Add (1) **D** 3-1/2" square to left side of Unit One and (1) **K** 3-1/2" square to right side of Unit Two. Sew units together as shown to make row 1. Make (12) Row One.



Make (12) Row One

5. A/M Unit: Draw a diagonal line on the wrong side of (1) **M** 3-1/2" square. Place square, right sides together, at the bottom right corner (1) **A** 3-1/2" x 4" rectangle. Sew on drawn line. Trim 1/4" away from sewn line. Open and press to reveal corner triangle.

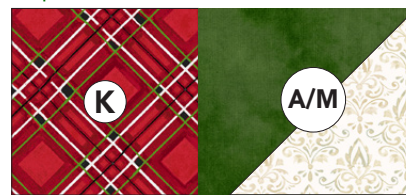
6. Unit Three: Add (1) **K** 3-1/2" square to left side of **AM** unit. Make (12) Unit Three.

7. Unit Four: Repeat steps 5 and 6 to make Unit Four, using **C** and **M** 3-1/2" squares and **G** 3-1/2" x 4" rectangle. *Note Unit Four is a mirror-image from Unit Three.* Make (12) Unit Four.

Step 5: AM unit



Step 6: Unit Three



Make (12) Unit Three

Step 7: Unit Four



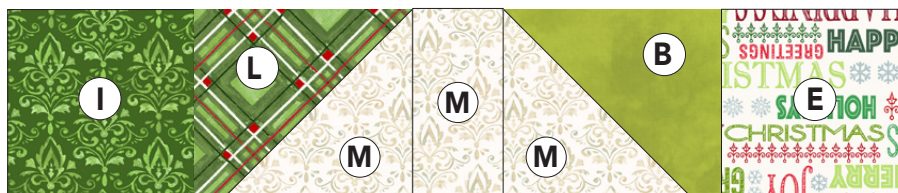
Make (12) Unit Four

8. Row Two: Sew (1) **M** 2-1/2" x 3-1/2" between Unit Three and Four. Make (12) Row Two.



Make (12) Row Two

9. Row Three: Similar to Row Two assembly make Row Three using **I**, **M** and **E** 3-1/2" squares, **B** and **L** 3-1/2" x 4" rectangles and **M** 2-1/2" x 3-1/2" rectangle. Refer to diagram.

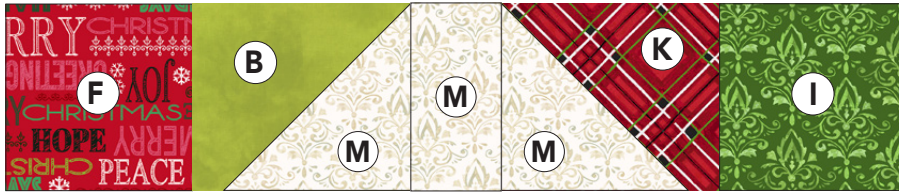


Make (12) Row Three



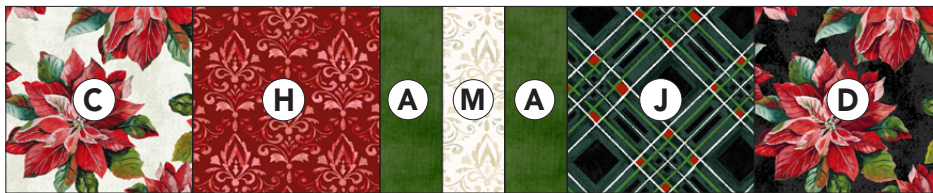
Cheerful Pine

10. Row Four: Similar to Row Two assembly make Row Four using **F**, **M** and **I** 3-1/2" squares, **B** and **K** 3-1/2" x 4" rectangles and **M** 2-1/2" x 3-1/2" rectangle. Refer to diagram.



Make (12) Row Four

11. Row Five: Take (1) **C**, **H**, **D**, and **J** 3-1/2" square and (2) **A** and (1) **M** 1-1/2" x 3-1/2" rectangles and sew together as shown.



Make (12) Row Five

12. Pine Tree Block: Sew Rows One through Five together as shown. Square block to 15-1/2". Make (12) Pine Tree Blocks. Set aside.



13. Sashing Strips Units: Sew (1) **M** 1-1/2" x WOF strip between (2) **A** 1-1/2" x WOF strips. Make (16) strip sets. Subcut (31) 3-1/2" x 15-1/2" sashing strip units and (20) 1-1/2" x 3-1/2" **A/M/A** units.



Subcut (31) Sashing Strip Units

Subcut (20) A/M/A units

14. Similar to **A/M/A** units for sashing block, sew together (1) **A** and (2) **M** 1-1/2" x WOF strips. Make (2) strip sets. Subcut (40) 1-1/2" x 3-1/2" **M/A/M** units.



Make (2) strip sets and subcut (40) M/A/M units



Cheerful Pine

Nine-Patch



15. Nine-Patch Block: Sew together (1) **M/A/M** unit between (2) **A/M/A** units to make a nine-patch unit. Make (20) nine-patch cornerstone units.

16. Sashing Rows: Sew together (4) nine-patch cornerstone units and (3) sashing strip units. Make (5) Sashing Rows.

Sashing Rows



NINE-PATCH

QUILT ASSEMBLY

17. Sew together (3) Pine Tree Blocks and (4) sashing strip units as shown. Make 4 Block Rows.



18. Sew sashing rows from step 16 to Block Rows as shown in Quilt Diagram (page 6). Then sew rows together to complete quilt center.

BORDER ASSEMBLY

19. Inner Border 1: Sew (1) **A** 2-1/2" x 75-1/2" strip to the left and right side of quilt center, followed by (1) **A** 2-1/2" x 61-1/2" strip to the top and bottom of quilt center.

20. Inner Border 2: Sew (1) **M** 1-1/2" x 79-1/2" strips to the left and right sides of quilt center, followed by (1) **M** 1-1/2" x 63-1/2" strip to the top and bottom of quilt center.

21. Outer Border: Sew (1) **K** 4" x 81-1/2" strip to the left and right sides of quilt center, followed by (1) **K** 4" x 70-1/2" strip to the top and bottom of quilt center to complete quilt top.

FINISHING: Layer quilt top, batting and backing together to form quilt sandwich.

Baste and quilt as desired. Bind using **N** 2-1/4" strips.



Cheerful Pine

QUILT DIAGRAM

