

BEGINNER
SKILL

Curious Neighbors

Designed by Wendy Sheppard
Featuring *Wild North* by Gareth Lucas

SIZE: 44" x 53"

FREE
PROJECT



THIS IS A DIGITAL REPRESENTATION OF THE QUILT TOP, FABRIC MAY VARY.

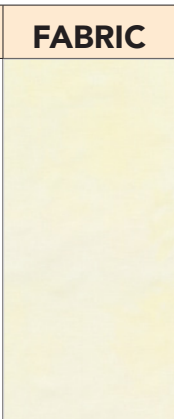
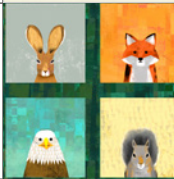






PLEASE NOTE: BEFORE MAKING YOUR PROJECT, CHECK FOR ANY PATTERN UPDATES AT WINDHAMFABRICS.COM'S FREE PROJECTS SECTION.



Curious Neighbors

PROJECT DISCLAIMER: Every effort has been made to ensure that all projects are error free. All the information is presented in good faith, however, no warranty can be given nor results guaranteed. Therefore, we assume no responsibility nor damages that may occur when referring to this pattern. When errors are brought to our attention, we make every effort to correct and post a revision as soon as possible. We suggest you check windhamfabrics.com for pattern updates and to test the pattern prior to making the project. Test templates first, before cutting all the pieces. Free projects are not for resale.


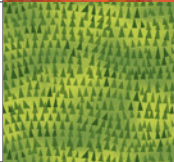


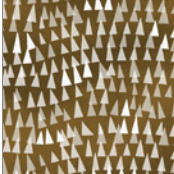
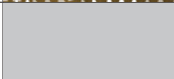
WOF = Width of Fabric

KEY	FABRIC	SKU	YD	CUTTING INSTRUCTIONS
A		37098-56 Cloud	7/8	<p>Sashing Rectangles (4) 1-1/2" x WOF strips; subcut (15) 1-1/2" x 8-1/2" rectangles.</p> <p>Sashing Strips (4) 1-1/2" x WOF strips; subcut (4) 1-1/2" x 35-1/2" strips.</p> <p>Inner Border: (5) 2-1/4" x WOF strips; subcut (2) 2-1/4" x 39" strips from (2) WOF strips. Piece remaining (3) WOF strips and subcut (2) 2-1/4" x 44-1/2" strips.</p>
B		53933D-1 Forest	1/2	<p>Note: Select (20) out of (24) animal prints for the quilt.</p> <p>Pieced Blocks (20) 4-1/2" squares, fussy cut to center animal squares.</p>
C		53934D-2 Teal	3/4	<p>Pieced Blocks (1) 4" x WOF strip; subcut (3) 4" x 8-1/2" rectangles.</p> <p>Outer Border: (5) 3-1/4" x WOF strips. Piece strips and subcut (2) 3-1/4" x 48" and (2) 3" x 44-1/2" strips.</p>
D		53935D-4 Sunrise	1/4	<p>Pieced Blocks (1) 5" x WOF strip; subcut (6) 2-1/2" x 5" rectangles. (1) 1" x WOF strip; subcut (3) 1" x 4-1/2" rectangles.</p>
E		53935D-2 Teal	1/3	<p>Pieced Blocks (2) 4" x WOF strips; subcut (5) 4" x 8-1/2" rectangles.</p>
F		53936D-6 Leaf	1/4	<p>Pieced Blocks (1) 4" x WOF strip; subcut (4) 4" x 8-1/2" rectangles.</p>
G		53937D-1 Forest	1/4	<p>Pieced Blocks (1) 4" x WOF strip; subcut (3) 4" x 8-1/2" rectangles.</p>
H		53937D-7 Yellow	1/4	<p>Pieced Blocks (1) 5" x WOF strip; subcut (10) 2-1/2" x 5" rectangles. (1) 1" x WOF strip; subcut (5) 1" x 4-1/2" rectangles.</p>



Curious Neighbors

WOF = Width of Fabric

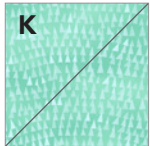
KEY	FABRIC	SKU	YD	CUTTING INSTRUCTIONS
I		53937D-8 Rust	1/4	Pieced Blocks (1) 5" x WOF strip; subcut (10) 2-1/2" x 5" rectangles. (1) 1" x WOF strip; subcut (5) 1" x 4-1/2" rectangles.
J		53938D-6 Leaf	1/4	Pieced Blocks (1) 5" x WOF strip; subcut (6) 2-1/2" x 5" rectangles. (1) 1" x WOF strip; subcut (3) 1" x 4-1/2" rectangles.
K		53938D-10 Aqua	5/8	Pieced Blocks (4) 4" x WOF strips; subcut (40) 4" squares.
L		53938D-11 Burnt Orange	1/4	Pieced Blocks (1) 5" x WOF strip; subcut (8) 2-1/2" x 5" rectangles. (1) 1" x WOF strip; subcut (4) 1" x 4-1/2" rectangles.
M		53938D-12 Walnut	3/4 <small>INCLUDES BINDING</small>	Pieced Blocks (2) 4" x WOF strips; subcut (5) 4" x 8-1/2" rectangles. Binding: (6) 2-1/4" x WOF strips.
		Backing	3	52" x 61" piece of batting.



Curious Neighbors

PIECED BLOCK

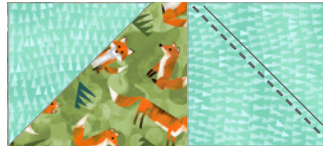
1. **Flying Geese Unit:** Draw a diagonal line on the wrong side of (1) **K** 4" square. Place square, right sides together, at a corner of (1) **F** 4" x 8-1/2" rectangle. Sew on drawn line. Trim 1/4" away from sewn line. Open and press to reveal **K** corner triangle. Repeat with another **K** square at the opposite corner of the same **F** rectangle.



Draw diagonal line on wrong side.



Sew on drawn line. Trim 1/4" away from sewn line.

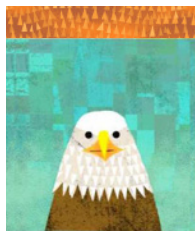


Open and press to reveal **K** corner triangle. Repeat at opposite corner.

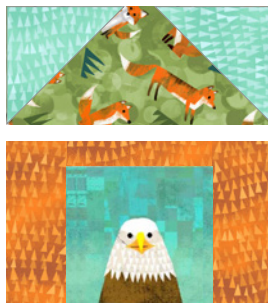
FLYING GEESE UNIT



2. Sew (1) **L** 1" x 4-1/2" rectangle to the top of (1) **B** 4-1/2" square, followed by (2) **L** 2-1/2" x 5" rectangles to the left and right sides of the same **B** rectangle.



3. Sew Step 1 unit on top of Step 2 unit to complete (1) Pieced Block, measuring 8-1/2" square unfinished. Make (4) of **F/L**.



Make (4) of **F/L**.

Measures 8-1/2" square unfinished.



Curious Neighbors

REFER TO QUILT IMAGE FOR ANIMAL PRINT.

4. Repeat Steps 1-3 to make a total number of Pieced Blocks in the following fabric combinations:

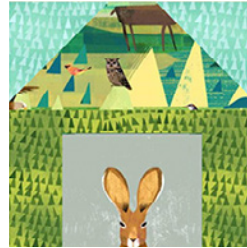
Make (5) of **M/H**



Make (5) of **E/I**



Make (3) of **C/J**

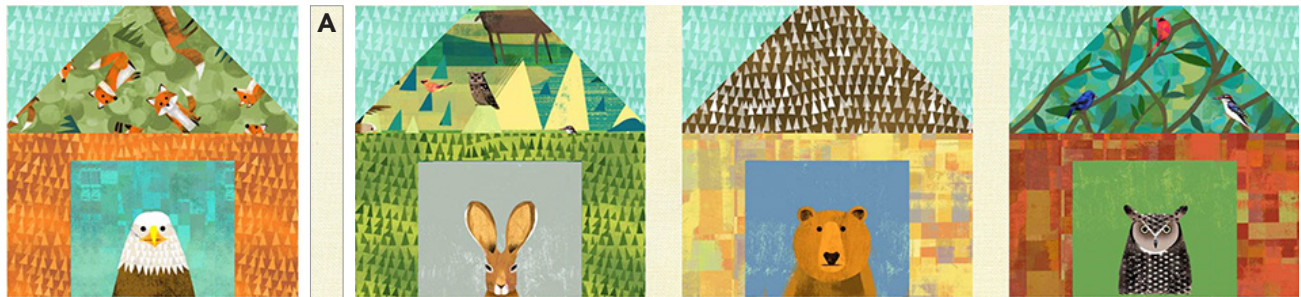


Make (3) of **G/D**



QUILT TOP ASSEMBLY

5. Sew together (4) Pieced Blocks, alternating with (3) **A** 1-1/2" x 8-1/2" rectangles to make a pieced row. Make (5). Row 1 is shown.



6. Sew together pieced rows, alternating with (4) **A** 1-1/2" x 35-1/2" sashing strips to complete quilt center.

BORDERS

7. Inner Border: Sew (2) **A** 2-1/4" x 44-1/2" strips to the opposite long sides of quilt center, followed by (2) **A** 2-1/4" x 39" strips to the remaining opposite short sides of quilt center.
8. Outer Border: Sew (2) **C** 3-1/4" x 48" strips to the opposite long sides of quilt center, followed by (2) **C** 3-1/4" x 44-1/2" strips to the remaining opposite short sides of quilt center to complete quilt top.



Curious Neighbors

QUILT ASSEMBLY DIAGRAM



FINISHING: Layer quilt top, batting and backing together to form quilt sandwich. Baste and quilt as desired. Bind using **M** 2-1/4" strips.