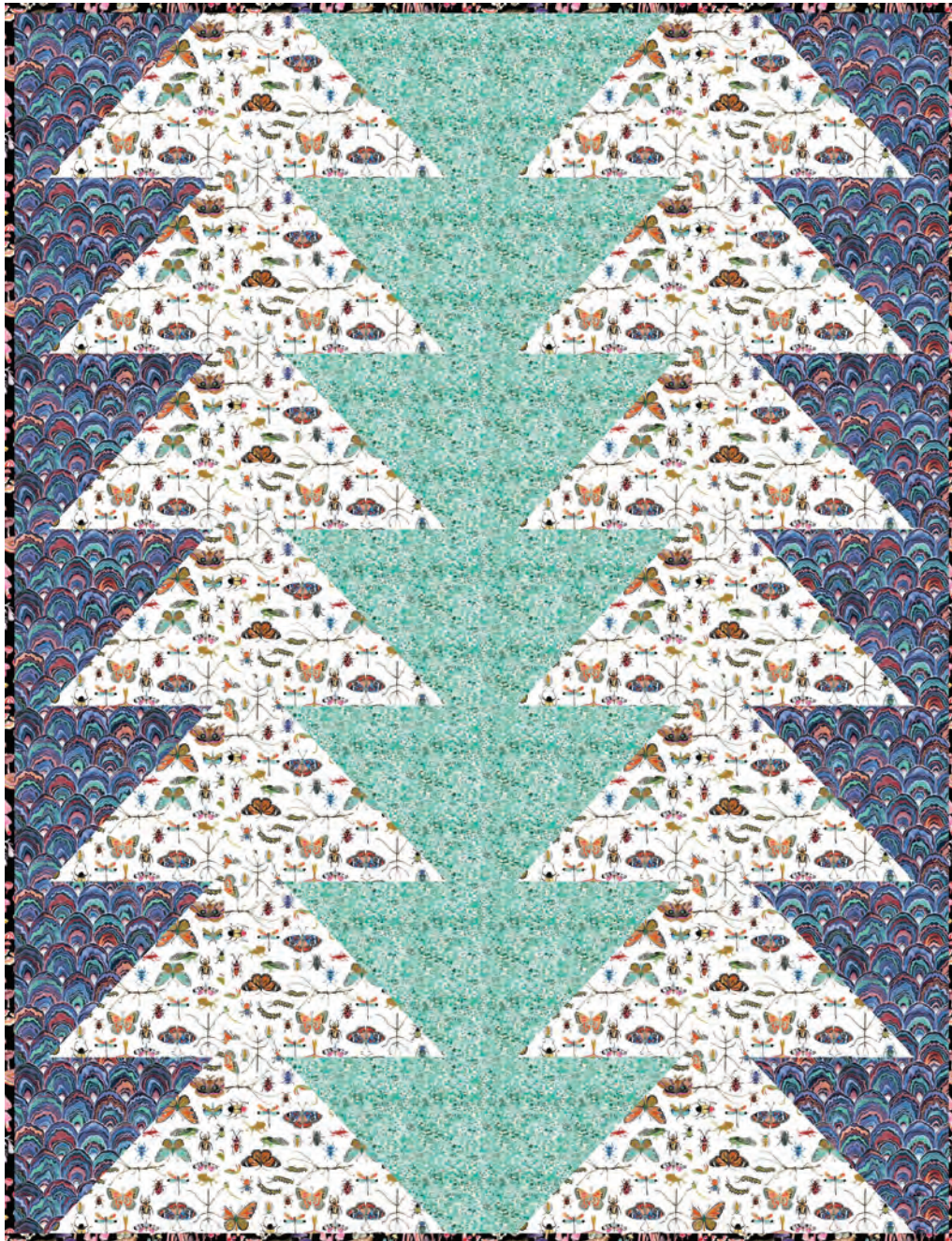


BEGINNER
SKILL

Deep Forest Flock

Designed by Josie Snyder
featuring *Deep Forest* by Betsy Olmsted
SIZE: 48-1/2" x 63"

FREE
PROJECT



THIS IS A DIGITAL REPRESENTATION OF THE QUILT TOP, FABRIC MAY VARY.

PLEASE NOTE: BEFORE MAKING YOUR PROJECT, CHECK FOR ANY PATTERN UPDATES AT WINDHAMFABRICS.COM'S FREE PROJECTS SECTION.



Deep Forest Flock

WOF = WIDTH OF FABRIC

KEY	FABRIC	SKU	YD	CUTTING INSTRUCTIONS
A		52993D-9 Pacific	1	(2) 10" x WOF strips; subcut (7) 10" squares and (3) 3" x 9-1/2" rectangles. (3) 3" x WOF strips; subcut (11) 3" x 9-1/2" rectangles.
B		52992D-2 White	1-1/2	(4) 10" x WOF strips; subcut (14) 10" squares and (6) 3" x 9-1/2" rectangles. (2) 3" x WOF strips; subcut (8) 3" x 9-1/2" rectangles.
C		52995D-15 Seafoam	3/4	(2) 10" x WOF strips; subcut (7) 10" squares and (3) 3" x 9-1/2" rectangles. (1) 3" x WOF strip; subcut (4) 3" x 9-1/2" rectangles.
D		52991D-1 Black FOR BINDING	1/2	Binding: (6) 2-1/4" x WOF strips.
		Backing	3-1/4	57" x 72" piece of batting

HALF-SQUARE TRIANGLES (HST)

1. Draw a diagonal line on the wrong side of (1) **A** 10" square. Place **A** square, right sides together, on (1) **B** 10" square. Sew 1/4" away from both sides of drawn line. Cut along drawn line to yield (2) HST units. Open and press. Square to 9-1/2". Make (14) **A/B** units.

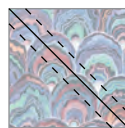
In the same way, use (7) each of **B** and **C** 10" squares to make (14) **B/C** half-square units.



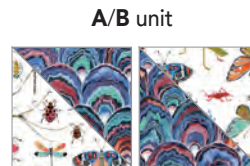
Draw diagonal line on wrong side of **A**.



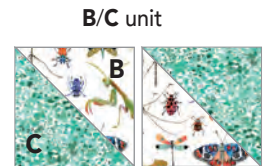
Place **A** on **B**, right sides together.



Sew 1/4" from both sides of solid line. Cut along solid line.



Open and press.
Yield (2) HSTs.
Make (14) total.



Open and press.
Yield (2) HSTs.
Make (14) total.

QUILT ASSEMBLY

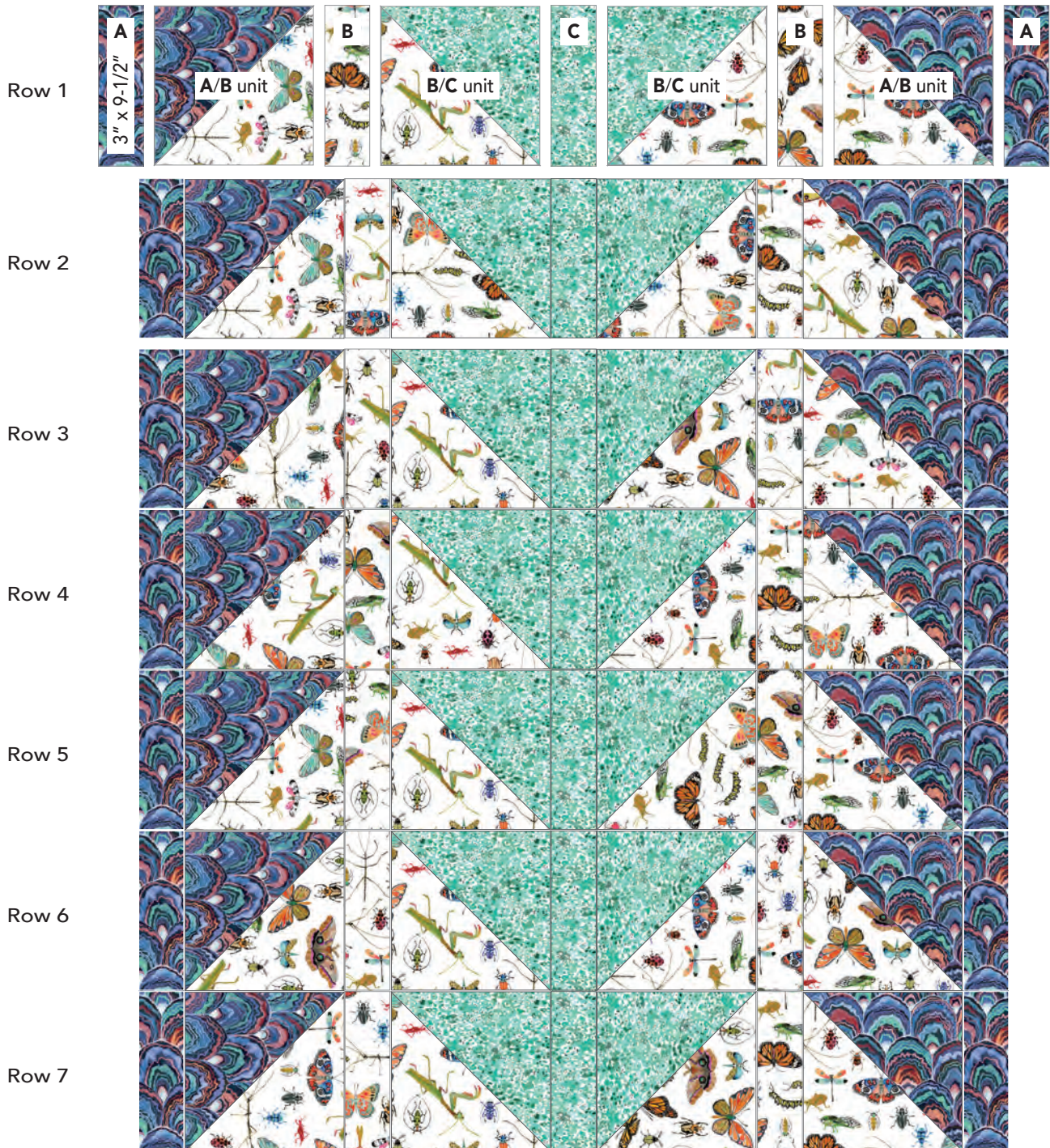
REFERENCE QUILT TOP ASSEMBLY ON THE NEXT PAGE FOR UNIT PLACEMENT.

2. Arrange and sew into a row: (2) **A/B** units, (2) **B/C** units, (2) each **A** and **B** and (1) **C** 3" x 9-1/2" rectangles as shown. Make (7) rows. Then sew the rows together to complete the quilt top.



Deep Forest Flock

QUILT ASSEMBLY



FINISHING: Layer quilt top, batting and backing together to form quilt sandwich. Baste and quilt as desired. Bind using **D** 2-1/4" strips.