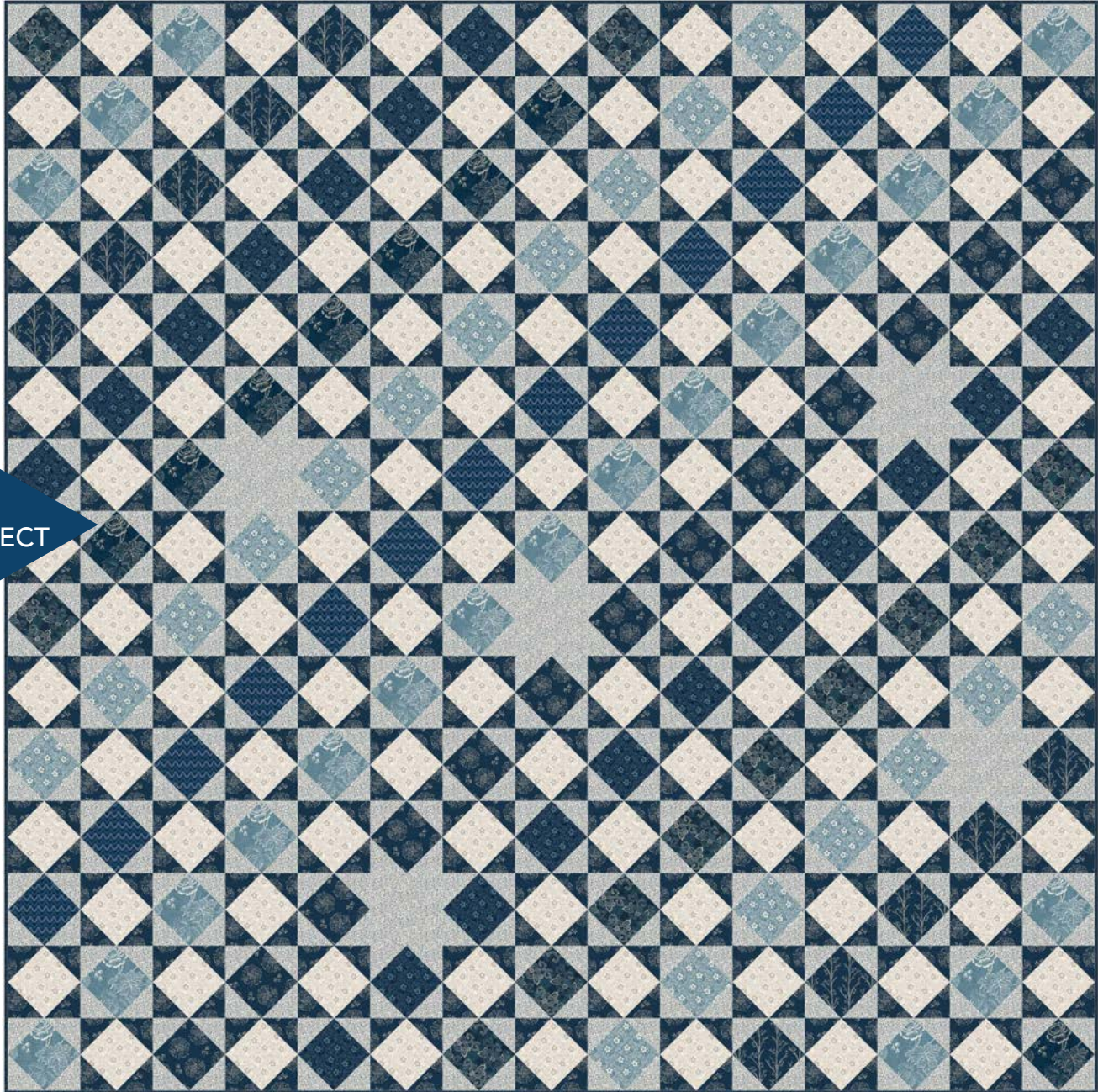


Star Cluster

designed by Wendy Sheppard
featuring the Willow collection by Whistler Studios
SIZE: 75" x 75"



FREE
PROJECT

THIS IS A DIGITAL REPRESENTATION OF THE QUILT TOP, FABRIC MAY VARY.

PLEASE NOTE: BEFORE MAKING YOUR PROJECT, CHECK FOR ANY PATTERN UPDATES AT WINDHAMFABRICS.COM'S FREE PROJECTS SECTION.



Star Cluster


Cutting Notes: Mark and store your pieces according to the sections they have been assigned to, as this will make it much easier when you start piecing. Be sure to read the entire pattern before you begin.

KEY	FABRIC	SKU	YD	CUTTING INSTRUCTIONS
A		52564-1 Indigo	1/2	(2) 5-1/2" x WOF strips. Subcut (10) 5-1/2" squares.
B		52564-3 Denim	5/8	(3) 5-1/2" x WOF strips. Subcut (21) 5-1/2" squares.
C		52565-1 Indigo	1/2	(2) 5-1/2" x WOF strips. Subcut (10) 5-1/2" squares.
D		52566-1 Indigo	5/8	(3) 5-1/2" x WOF strips. Subcut (18) 5-1/2" squares.
E		52566-3 Denim	5/8	(3) 5-1/2" x WOF strips. Subcut (18) 5-1/2" squares.
F		52566-4 Ivory	2-3/4	(16) 5-1/2" x WOF strips. Subcut (107) 5-1/2" squares.
G		52567-1 Indigo	1/2	(2) 5-1/2" x WOF strips. Subcut (10) 5-1/2" squares.
H		52568-1 Indigo	1/2	(2) 5-1/2" x WOF strips. Subcut (13) 5-1/2" squares.
I		52569-4 Ivory	3-3/8	(1) 5-1/2" x WOF strips. Subcut (5) 5-1/2" squares. (35) 3" x WOF strips. Subcut (452) 3" squares.
J		52570-1 Indigo	3-3/8	(2) 5-1/2" x WOF strips. Subcut (13) 5-1/2" squares. (33) 3" x WOF strips. Subcut (428) 3" squares.

PROJECT DISCLAIMER: Every effort has been made to ensure that all projects are error free. All the information is presented in good faith, however, no warranty can be given nor results guaranteed. Therefore, we assume no responsibility nor damages that may occur when referring to this pattern. When errors are brought to our attention, we make every effort to correct and post a revision as soon as possible. We suggest you check windhamfabrics.com for pattern updates and to test the pattern prior to making the project. Test templates first, before cutting all the pieces. Free projects are not for resale.



Star Cluster

KEY	FABRIC	SKU	YD	CUTTING INSTRUCTIONS
K		52569-1 Indigo	2/3	(8) 2-1/4" x WOF strips for binding.
		Backing	4-7/8	83" x 83" square of batting

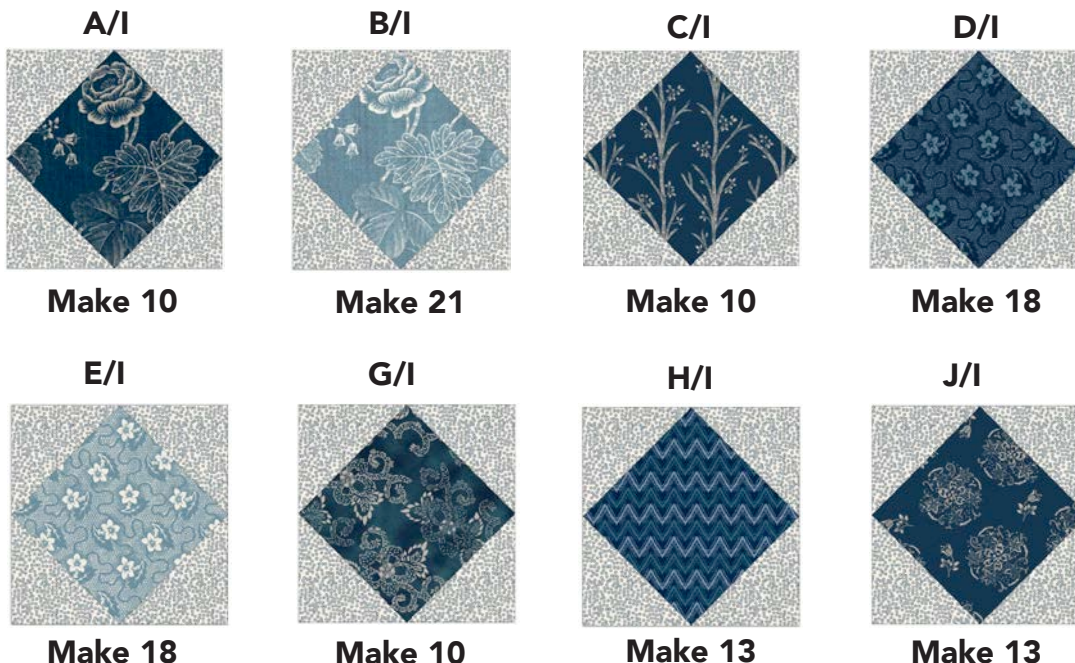
MAKING THE #1 BLOCKS

1. Draw a diagonal line on the wrong side of (4) **I** 3" squares. Place a marked square, right sides together, on a corner of (1) **A** 5-1/2" square. Sew on the drawn line, trim seam allowance to 1/4" and press the corner triangle open. Repeat with marked squares on the remaining **A** corners to make block #1.



Block #1

2. Make the number indicated of each block #1 fabric combination.





Star Cluster

MAKING THE #1 BLOCKS

3. Draw a diagonal line on the wrong side of (4) **J** 3" squares. Place a marked square, right sides together, on a corner of (1) **F** 5-1/2" square. Sew on the drawn line, trim seam allowance to 1/4" and press the corner triangle open. Repeat with marked squares on the remaining **F** corners to make block #2. Make a total of (107) **F/J** #2 blocks.



#2 block

Make 107

ASSEMBLING THE QUILT

4. To make the top left section of the quilt, lay out (32) of block #1, (31) of block #2, and (1) **I** 5" square into (8) rows of (8) as shown on p. 4. Sew into rows and join the rows to complete the top left section.

5. To make the top right section of the quilt, lay out (28) of block #1, (27) of block #2, and (1) **I** 5" square into (8) rows of (7). Sew into rows and join the rows to complete the top right section.

6. To make the bottom left section of the quilt, lay out (28) of block #1, (26) of block #2, and (2) **I** 5" squares into (7) rows of (7). Sew into rows and join the rows to complete the bottom left section.

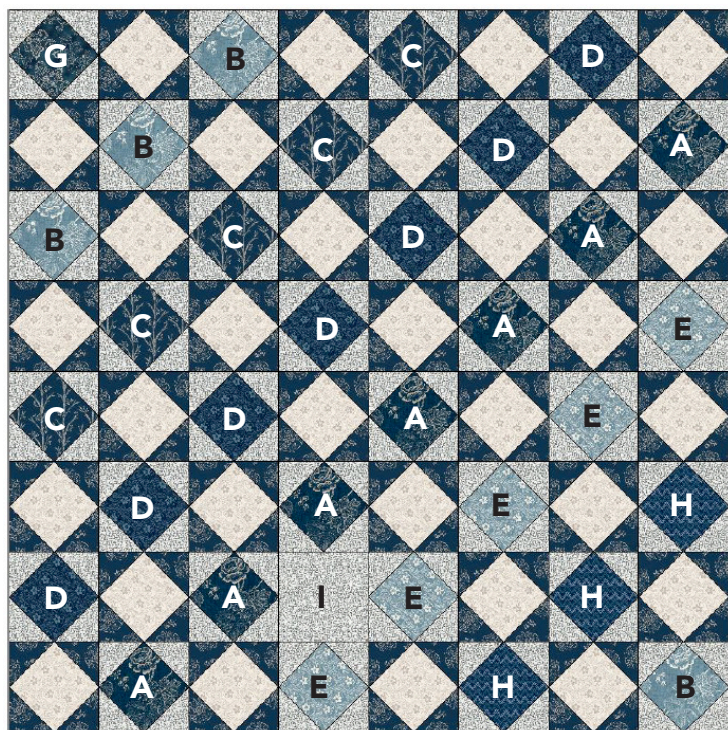
7. To make the bottom right section of the quilt, lay out (25) of block #1, (23) of block #2, and (1) **I** 5" square into (7) rows of (7). Sew into rows and join the rows to complete the bottom right section.

8. Join the sections together to complete the quilt top.



Star Cluster

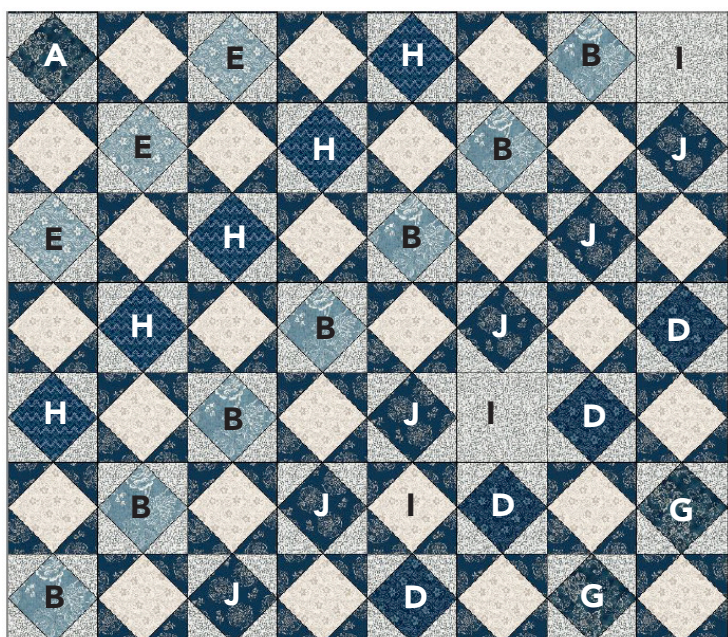
Top left section



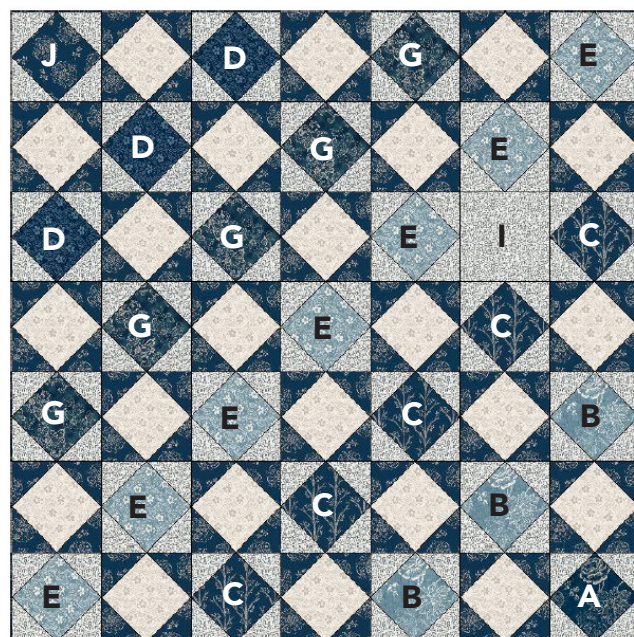
Top right section



Bottom left section



Bottom right section



FINISHING

Layer quilt top, batting and backing together to form quilt sandwich. Baste and quilt as desired. Bind using **K** strips.