

INTERMEDIATE
SKILL

Summer Garden

Designed by *Marsha Evans Moore*
Featuring *Flourish* specialty collection
SIZE: 60" x 82"

REQUIRES APPLIQUÉ AND CURVED PIECING TECHNIQUES



FREE BATIK
PROJECT

THIS IS A DIGITAL REPRESENTATION OF THE QUILT TOP, FABRIC MAY VARY.

PLEASE NOTE: BEFORE MAKING YOUR PROJECT, CHECK FOR ANY PATTERN UPDATES AT WINDHAMFABRICS.COM'S FREE PROJECTS SECTION.










Summer Garden

PROJECT DISCLAIMER: Every effort has been made to ensure that all projects are error free. All the information is presented in good faith, however, no warranty can be given nor results guaranteed. Therefore, we assume no responsibility nor damages that may occur when referring to this pattern. When errors are brought to our attention, we make every effort to correct and post a revision as soon as possible. We suggest you check windhamfabrics.com for pattern updates and to test the pattern prior to making the project. Test templates first, before cutting all the pieces. Free projects are not for resale.

CUTTING NOTES: Please read the entire pattern before you begin. For turned under appliqué techniques, trace templates and cut along the solid outer line. For raw edge appliqué techniques, trace templates and cut along the inner solid line. The templates and placement patterns are found on pages 7-9. See appliqué instruction before cutting templates. Reverse Fabric N triangles on WOF strips to conserve fabric.

WOF = WIDTH OF FABRIC

KEY	FABRIC	SKU	YD	CUTTING INSTRUCTIONS
A		3344Q-X Black	1-1/8	(8) 3" x WOF strips; subcut (32) Large Triangle templates. (3) 3-3/8" x WOF strips; subcut (8) Small Triangle templates and (8) Small Triangle templates reversed.
B		3345Q-X Black	1-1/4	FOR RAW EDGE APPLIQUÉ: (7) Stems templates and (7) Stems reversed. (1) Short Stem and (1) Short Stem reversed. FOR TURNED EDGE APPLIQUÉ: (14) 1-1/4" x 13" bias strips. (2) 1-1/4" x 10-1/2" bias strips. FOR BINDING: (8) 2-1/4" x WOF strips, sew short ends together. (16) Quarter Circle templates. (8) Small Leaf templates.
C		3346Q-X Grass	3/4	(16) Large Leaf templates. (20) Diamond templates.
D		3348Q-X Green	5/8	(16) Medium Leaf templates. (20) Diamond templates.
E		3350Q-X Magenta	1/2	(20) Petal templates. (8) Diamond templates. (4) 2-1/2" squares. (4) 2-1/4" squares.
F		3351Q-X Rosey	1/2	(20) Petal templates. (12) Diamond templates.
G		3352Q-X Yellow	5/8	(20) Petal templates. (20) Diamond templates.



Summer Garden

KEY	FABRIC	SKU	YD	CUTTING INSTRUCTIONS
H		3353Q-X White	7/8	(8) 2-1/2" x WOF strips; sew short ends together. Subcut (5) 2-1/2" x 64-1/2" strips. (4) 5-1/2" squares.
I		3354Q-X Green	1/4	(8) Petal templates.
J		3355Q-X Grass	1-1/8	(7) 2-1/2" x WOF strips, sew short ends together. Subcut (2) 2-1/2" x 78" and (2) 2-1/2" x 56" borders. (6) 2-1/4" x WOF strips, sew short ends together. Subcut (2) 2-1/4" x 64-1/2" and (2) 2-1/2" x 42-1/2" borders. (12) Petal templates.
K		100Q-1414 Milk	1-7/8	(7) 8-1/2" x WOF strips; subcut (14) 16-1/2" x 8-1/2" rectangles and (4) 8-1/2" squares.
		Backing	5	68" x 90" batting.

ADDITIONAL MATERIALS

Thread to match fabrics
Basic sewing supplies

Sewing machine
Template plastic

Water soluble fabric marker
Rotary cutter, ruler and mat

Optional: For turned under edge appliqué: freezer paper or other template paper.
For raw edge appliqué: paper backed fusible webbing.

BLOCKS

1. Using your favorite appliqué method, prepare Large, Medium and Small Leaf appliqué pieces. Prepare raw edge appliqué Stems in the same way as leaves.

2. For turned edge appliqué stems, fold (14) **B** 13" and (2) 10-1/2" bias strips in half lengthwise with wrong sides together. Sew 1/4" from fold. Trim raw edge 1/8" from stitching. Press stem flat with seam centered on one side. Make the number indicated. (Stitching and edge of seam allowance is shown in white for contrast.)

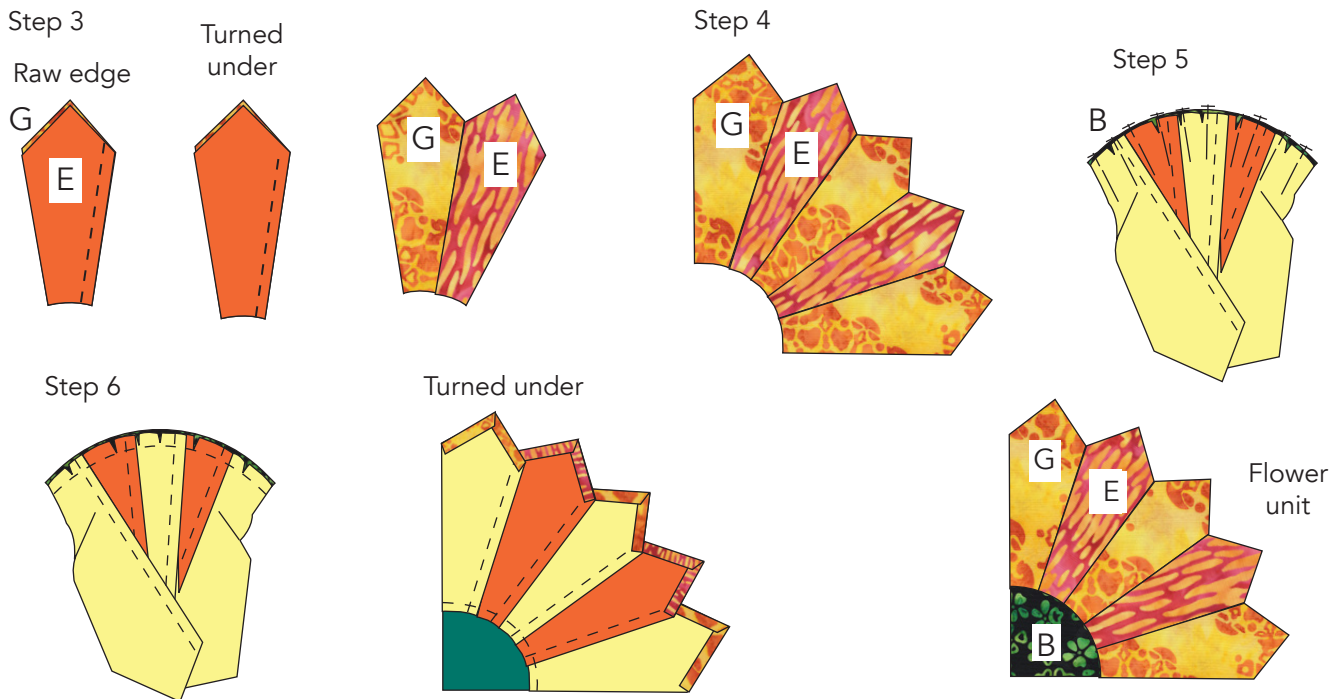
FOLD



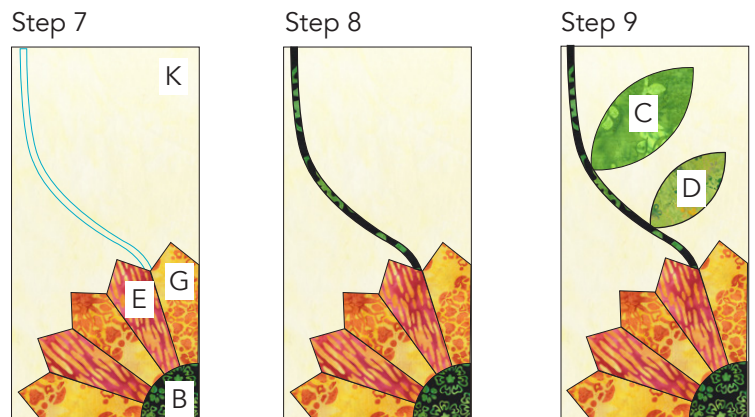


Summer Garden

3. Sew (1) **E** petal to (1) **G** petal along 1 long edge. For turned under appliqué, begin stitching at corner of seamline.
4. Sew (2) **G** petals and (1) **E** petal in the same manner alternating the fabrics to complete **G/E** petal unit. Make 1.
5. Align the center of the inner curve of (1) **G/E** petal unit and the curved edge of (1) **B** 1/4 circle and then, pin the centers together. Pin the ends together. Ease the curves along the seamline and pin about every 1/2". Clip seam allowance if necessary.
6. Carefully and slowly, sew along the seamline. Press seam toward the quarter circle to complete the flower unit. For turned under appliqué, press under the seam allowance on the short outer edges of the petals.



7. Pin (1) **G/E** flower unit to corner of (1) **K** 8-1/2" x 16-1/2" rectangle. Trace stem placement to rectangle unit.
8. Pin, fuse or baste **B** stem to **K** rectangle, tucking the end under outer edge of flower unit. Sew stem and outer edge of flower unit in place along edges. Baste flower unit to rectangle along side and lower seamline.
9. Pin, fuse or baste (1) **C** Large Leaf appliqué and (1) **D** Medium Leaf appliqué to position on **K** rectangle. Sew leaves in place along edges to complete block. Make 1.

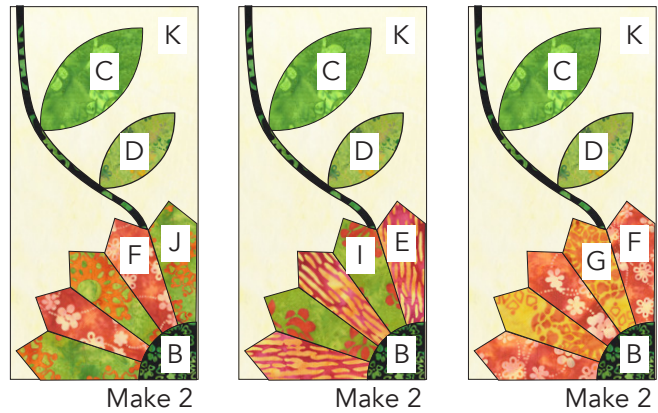


Make 1



Summer Garden

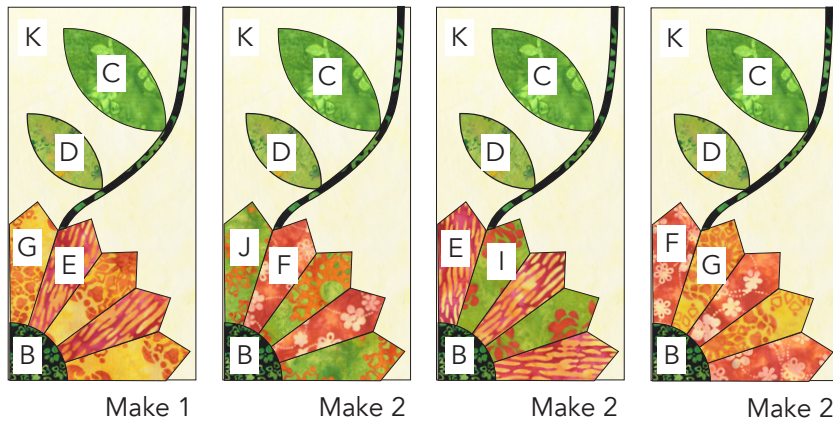
10. Following steps 3-9, make blocks using **J/F**, **E/I** and **F/G** petal combinations as shown. Make 2 each.



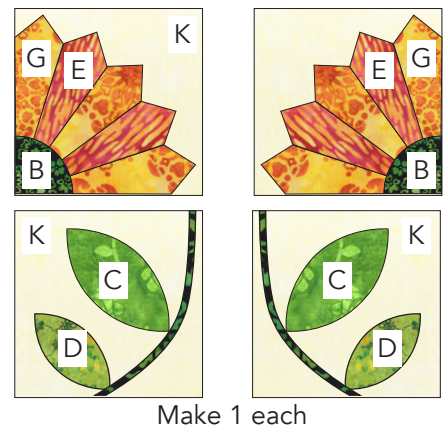
11. Following steps 3-9, make mirror image blocks using the reversed stems. Make the number indicated.

12. Make 2 flower blocks using **G/E** Petals. Make 2 leaf blocks using **B** short stems. Make 1 each.

Step 11

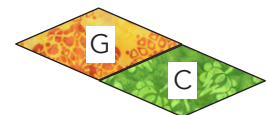


Step 12



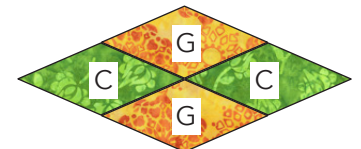
PATCHWORK BORDERS

13. Sew (1) **C** Diamond to (1) **G** Diamond to make a diamond pair. Make 2.



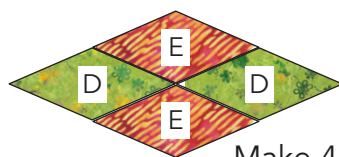
Make 2

14. Sew (2) **C/G** diamond pairs together matching the seams to make a diamond unit. Make 10.

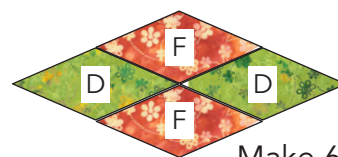


Make 10

15. In the same manner, make the following diamond units: **E/D** and **F/D**. Make the number indicated.



Make 4



Make 6



Summer Garden

16. Sew (1) **A** Small Triangle and (1) **A** Large Triangle to opposite sides of (1) **C/G** diamond unit to make an end unit. Make 1. Repeat with (1) **F/D** diamond unit. Make 1.

17. Sew (2) **A** Large Triangles to opposite sides of (1) **E/D** diamond unit to make a diamond/triangle unit. Make 1. Repeat with (1) **C/G** diamond unit. Make 1.

18. Sew the end units and diamond/triangle units together. Sew (1) **A** Small Triangle reversed to each corner to make top/bottom patchwork border, measuring 45-1/2" x 5-1/2". Make 2.

Top and Bottom Patchwork Borders



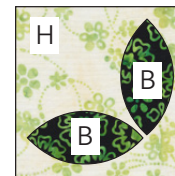
19. Sew (1) **A** Small Triangle and (1) **A** Large Triangle to opposite sides of (1) **D/F** diamond unit to make an end unit. Make 1. Sew (1) **A** Small Triangle and (1) **A** Large Triangle to opposite sides of (1) **C/G** diamond unit to make an end unit. Make 1.

20. Following step 17, make (2) **C/G**, (1) **D/E**, and (1) **D/F** diamond/triangle units.

21. Sew the end units and diamond/triangle units together. Sew (1) **A** Small Triangle reversed to each corner to make side patchwork border, measuring 68" x 5-1/2". Make 2.

CORNER BLOCKS

22. Pin, fuse or baste (2) **B** Small Leaf appliqués to **H** 5-1/2" squares. Leaves should be 1/2" from edge of square. Sew leaves in place along edges to complete corner block. Make 4.



Make 4

QUILT CENTER ASSEMBLY

23. Following the layout diagram on page 6, arrange the rectangular blocks and square blocks in 4 rows. Note the color of the flowers and the orientation of blocks. Sew the blocks in each row together to make the block rows.

24. Sew together (5) **H** 2-1/2" x 64-1/2" strips alternating with (4) block rows to make the quilt center.

BORDERS

25. Sew (1) **J** 2-1/4" x 64-1/2" border to each side of quilt center. Sew (2) **E** 2-1/4" squares to ends of (2) **J** 2-1/4" x 42-1/2" borders. Sew to top and bottom of quilt.

26. Sew (1) Side Patchwork border to each side of quilt. Note position of diamonds. Sew (2) corner blocks to ends of (2) top and bottom borders. Note position of leaves on blocks. Sew to top and bottom of quilt. Ease borders to fit as needed.

27. Sew (1) **J** 2-1/2" x 78" border to each side of quilt center. Sew (2) **E** 2-1/2" squares to ends of (2) **J** 2-1/2" x 56" borders. Sew to top and bottom of quilt.

FINISHING: Layer quilt top, batting and backing together to form quilt sandwich. Baste and quilt as desired. Bind using **B** 2-1/4" strips.

Side Patchwork Borders



Make 2



Summer Garden

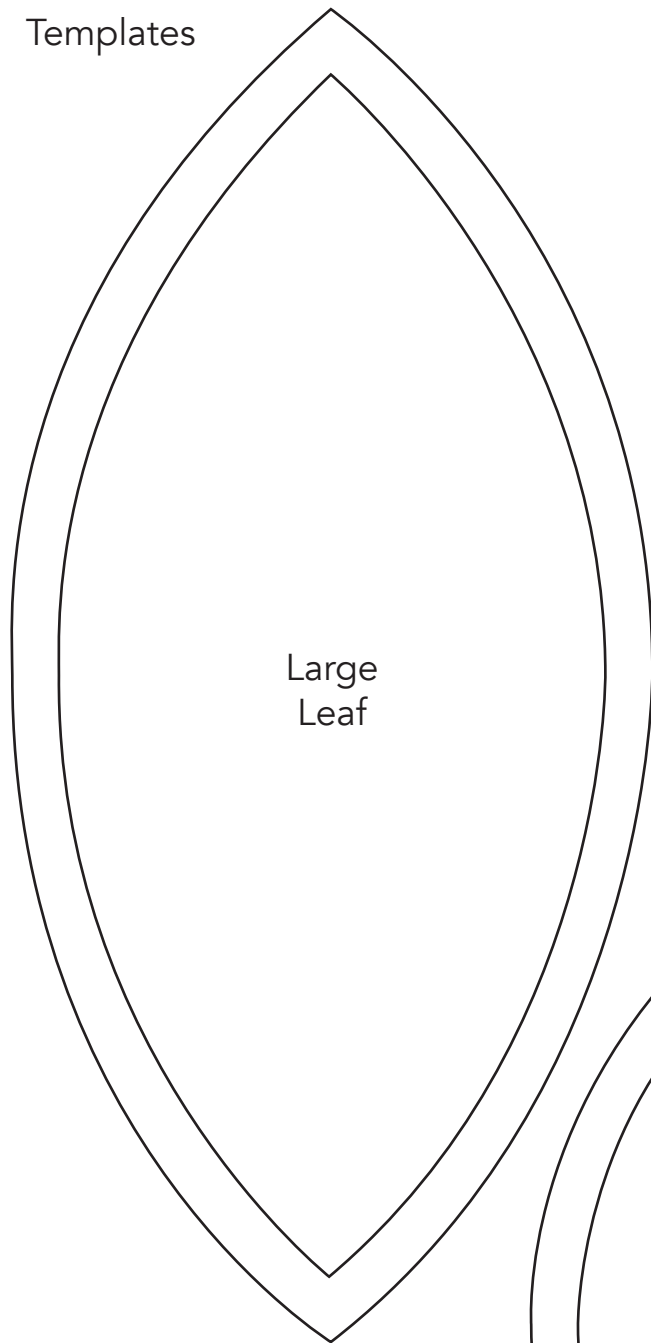
Quilt Layout



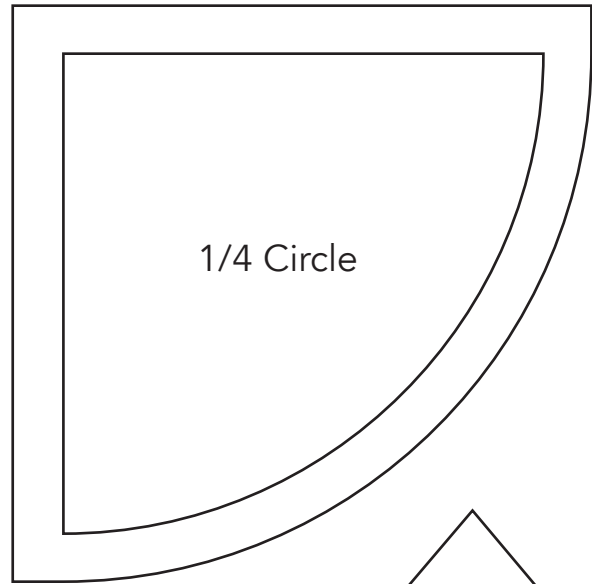


Summer Garden

Templates



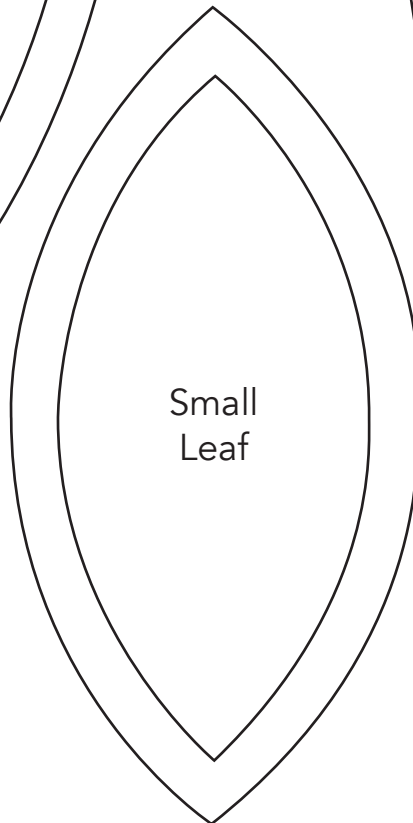
Large Leaf



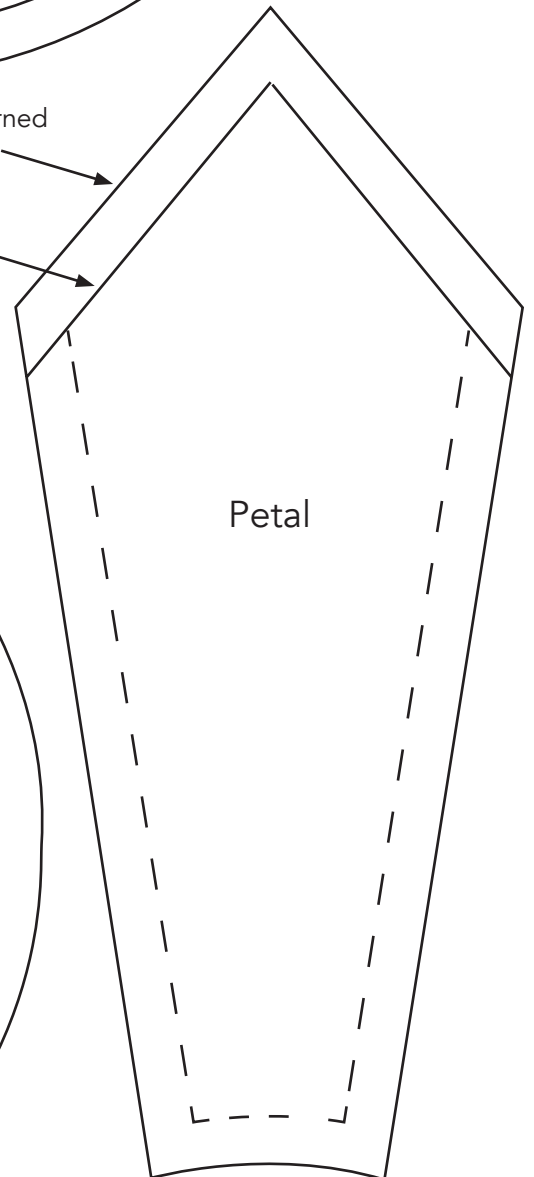
1/4 Circle

Cut here for turned edge appliqué.

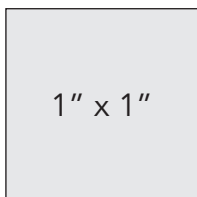
Cut here for raw edge appliqué.



Small Leaf



Petal



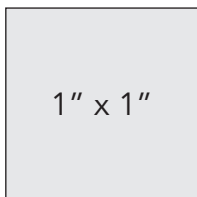
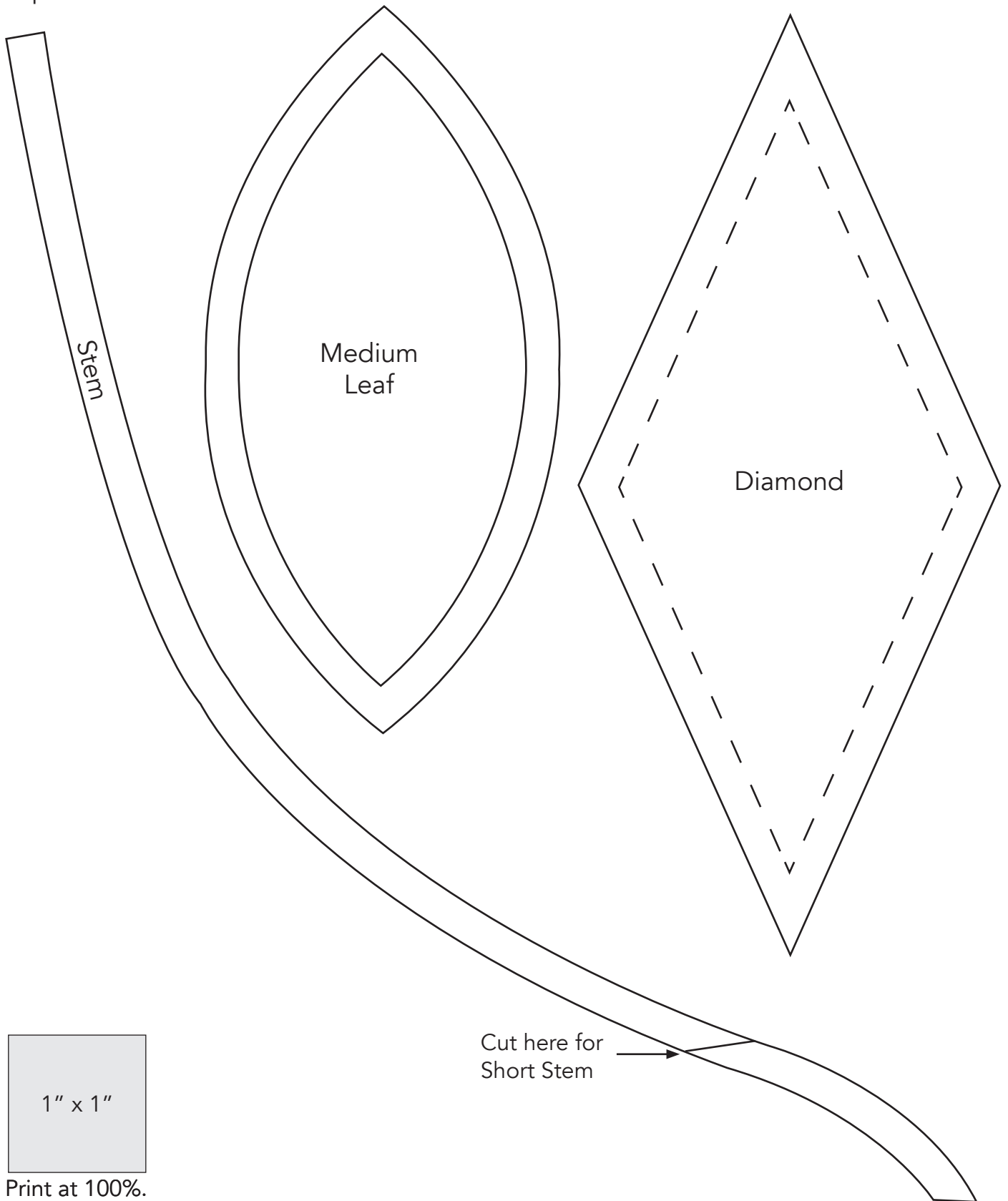
1" x 1"

Print at 100%.



Summer Garden

Templates



1" x 1"

Print at 100%.

Cut here for
Short Stem



Summer Garden

Templates

Cut out Large Triangle templates. Place the right template over the gray area of the left template matching the center lines. Tape or glue together.

