

# Titan

Featuring the Titan Collection by Another Point of View

Quilt Design by Heidi Pridemore

Pattern by Heidi Pridemore of The Whimsical Workshop

Quilt Size: 39" x 51"



Please Note: Quilt Image shown is a digital representation, fabric look may vary on your project. Check [www.windhamfabrics.com](http://www.windhamfabrics.com) Free Project section online to see if there are any pattern updates before you start your quilt project.



**WINDHAM FABRICS**

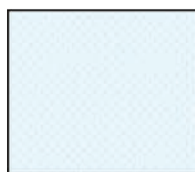
812 Jersey Ave – Jersey City, NJ 07310 – 201.659.0444 ~ FAX: 201.659.9719  
[www.windhamfabrics.com](http://www.windhamfabrics.com) email: [retail@windhamfabrics.com](mailto:retail@windhamfabrics.com)

# Titan

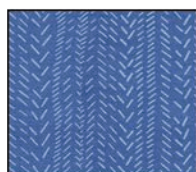
Page 2

## Estimated Fabric Requirements:

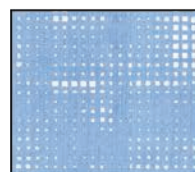
- ¼ yard – 50052-5 Light Wash
- ⅓ yard – 50048-6 Cornflower
- ¼ yard – 50050-6 Cornflower
- ⅝ yard – 50049-6 Cornflower
- ¼ yard – 50051-5 Light Wash
- ¼ yard – 50051-6 Cornflower
- ¼ yard – 50049-4 Moss
- ⅓ yard – 50048-4 Moss
- ⅓ yard – 50051-4 Moss
- ¼ yard – 50050-4 Moss
- ⅓ yard – 50050-1 Storm
- ⅓ yard – 50048-1 Storm
- ¼ yard – 50052-1 Storm
- ¼ yard – 50049-1 Storm
- ¼ yard – 50051-1 Storm
- ¼ yard – 50051-2 Camel
- ⅓ yard – 50048-2 Camel
- ¼ yard – 50049-2 Camel
- ¼ yard – 50052-2 Camel
- ¼ yard – 50050-2 Camel
- 1 ⅝ yards – 50052-3 Oatmeal
- ⅜ yard – 50048-5 Light Wash
- 2 ¾ yards – 50050-3 Oatmeal



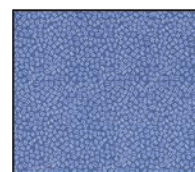
50052-5 Light Wash  
(A)



50048-6 Cornflower  
(B)



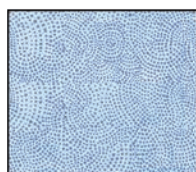
50050-6 Cornflower  
(C)



50049-6 Cornflower  
(D)



50051-5 Light Wash  
(E)



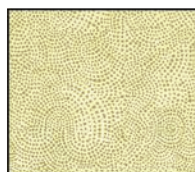
50051-6 Cornflower  
(F)



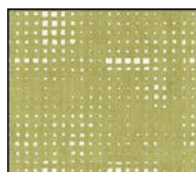
50049-4 Moss  
(G)



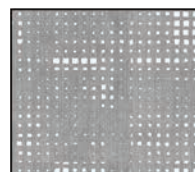
50048-4 Moss  
(H)



50051-4 Moss  
(I)



50050-4 Moss  
(J)



50050-1 Storm  
(K)



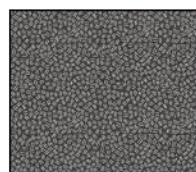
50048-1 Storm  
(L)

## You will also need:

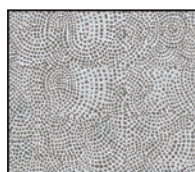
- GO! Local Color #55452  
(6" x 12" finished) die



50052-1 Storm  
(M)



50049-1 Storm  
(N)



50051-1 Storm  
(O)



50051-2 Camel  
(P)



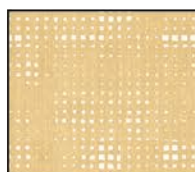
50048-2 Camel  
(Q)



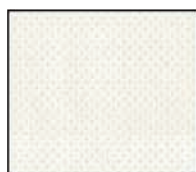
50049-2 Camel  
(R)



50052-2 Camel  
(S)



50050-2 Camel  
(T)



50052-3 Oatmeal  
(U)



50048-5 Light Wash  
(V)



50050-3 Oatmeal  
(Backing)



WINDHAM FABRICS

www.windhamfabrics.com

# Titan

Page 3

## Cutting Instructions:

Fabric A: Ring Dots – Light Wash

- Cut (1) 4" x Width of Fabric (WOF) strip. Sub-cut (2) 4" x 9 ½" rectangles. Cut (2) Template 2 pieces using the GO! Local Color die.

Fabric B: Hash Marks – Cornflower

- Cut (1) 7 ½" x WOF strip. Sub-cut (4) 4" x 7 ½" rectangles. Cut (4) Template 3 pieces using the GO! Local Color die.

Fabric C: Grid – Cornflower

- Cut (1) 4" x WOF strip. Sub-cut (4) 4" x 9 ½" rectangles. Cut (4) Template 2 pieces using the GO! Local Color die.

Fabric D: Tossed Dashes – Cornflower

- Cut (1) 4" x WOF strip. Sub-cut (2) 4" x 7 ½" rectangles. Cut (2) Template 3 pieces using the GO! Local Color die.
- Cut (5) 2 ½" x WOF strips for the binding.

Fabric E: Mini Dots – Light Wash

- Cut (1) 4" x WOF strip. Sub-cut (4) 4" x 9 ½" rectangles. Cut (4) Template 2 pieces using the GO! Local Color die.

Fabric F: Mini Dots – Cornflower

- Cut (1) 4" x WOF strip. Sub-cut (2) 4" x 9 ½" rectangles. Cut (2) Template 2 pieces using the GO! Local Color die.

Fabric G: Tossed Dashes – Moss

- Cut (1) 4" x WOF strip. Sub-cut (2) 4" x 9 ½" rectangles. Cut (2) Template 2 pieces using the GO! Local Color die.

Fabric H: Hash Marks – Moss

- Cut (1) 7 ½" x WOF strips. Sub-cut (6) 4" x 7 ½" rectangles. Cut (6) Template 3 pieces using the GO! Local Color die.

Fabric I: Mini Dots – Moss

- Cut (2) 4" x WOF strips. Sub-cut (6) 4" x 9 ½" rectangles. Cut (6) Template 2 pieces using the GO! Local Color die.

Fabric J: Grid – Moss

- Cut (1) 4" x WOF strip. Sub-cut (4) 4" x 9 ½" rectangles. Cut (4) Template 2 pieces using the GO! Local Color die.

Fabric K: Grid – Storm

- Cut (2) 4" x WOF strips. Sub-cut (6) 4" x 9 ½" rectangles. Cut (6) Template 2 pieces using the GO! Local Color die.

Fabric L: Hash Marks – Storm

- Cut (1) 7 ½" x WOF strip. Sub-cut (4) 4" x 7 ½" rectangles. Cut (4) Template 3 pieces using the GO! Local Color die.



WINDHAM FABRICS

[www.windhamfabrics.com](http://www.windhamfabrics.com)

# Titan

Page 4

## Cutting Instructions - Continued:

Fabric M: Ring Dots – Storm

- Cut (1) 4" x WOF strip. Sub-cut (4) 4" x 9 ½" rectangles. Cut (4) Template 2 pieces using the GO! Local Color die.

Fabric N: Tossed Dashes – Storm

- Cut (1) 4" x WOF strip. Sub-cut (2) 4" x 7 ½" rectangles. Cut (2) Template 3 pieces using the GO! Local Color die.

Fabric O: Mini Dots – Storm

- Cut (1) 4" x WOF strip. Sub-cut (2) 4" x 9 ½" rectangles. Cut (2) Template 2 pieces using the GO! Local Color die.

Fabric P: Mini Dots – Camel

- Cut (1) 4" x WOF strip. Sub-cut (2) 4" x 9 ½" rectangles. Cut (2) Template 2 pieces using the GO! Local Color die.

Fabric Q: Hash Marks – Camel

- Cut (1) 7 ½" x WOF strips. Sub-cut (6) 4" x 7 ½" rectangles. Cut (6) Template 3 pieces using the GO! Local Color die.

Fabric R: Tossed Dashes – Camel

- Cut (1) 4" x WOF strip. Sub-cut (4) 4" x 9 ½" rectangles. Cut (4) Template 2 pieces using the GO! Local Color die.

Fabric S: Ring Dots – Camel

- Cut (1) 4" x WOF strip. Sub-cut (4) 4" x 9 ½" rectangles. Cut (4) Template 2 pieces using the GO! Local Color die.

Fabric T: Grid – Camel

- Cut (1) 4" x WOF strip. Sub-cut (2) 4" x 9 ½" rectangles. Cut (2) Template 2 pieces using the GO! Local Color die.

Fabric U: Ring Dots - Oatmeal

- Cut (8) 4" x WOF strips. Sub-cut (48) 4" x 7" rectangles. Cut (48) Template 1 pieces using the GO! Local Color die.

Fabric V: Hash Marks – Light Wash

- Cut (3) 2" x WOF strips. Sew the strips together end to end with diagonal seams and cut (2) 2" x 48 ½" strips.
- Cut (2) 2" x 39 ½" WOF strips.

Backing: Grid – Oatmeal

- Cut (2) 47" x WOF strips for the backing. Sew the strips together and trim to make the 47" x 59" back.



WINDHAM FABRICS

[www.windhamfabrics.com](http://www.windhamfabrics.com)

# Titan

Page 5

## Block Assembly:

1. Pin (1) Fabric U-Template 1 piece to each side of (1) Fabric A-Template 2 piece, with right sides together, along the top curve, aligning the notches on each side (Fig. 1).
2. With the Template 1 on top, sew each piece in place, to make (1) Unit 1 piece. Press towards Template 1 (Fig. 2). Repeat to make (2) Unit 1 pieces total.

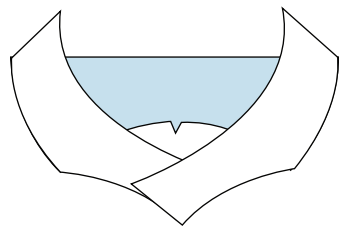


Fig. 1

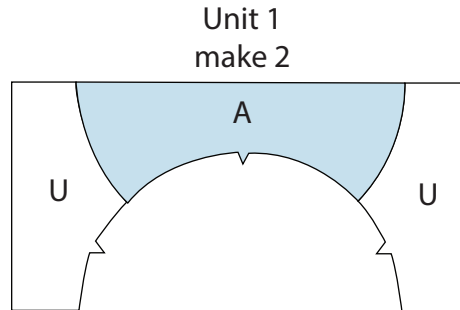


Fig. 2

3. Pin (1) Fabric B-Template 3 piece to the top of (1) Fabric C-Template 2 piece, with right sides together, along the curve, aligning the notches on each piece (Fig. 3).
4. With the Template 3 on top, sew the (2) pieces together, to make (1) Unit 2 piece. Press towards Template 3 (Fig. 4). Repeat to make (2) Unit 2 pieces total.

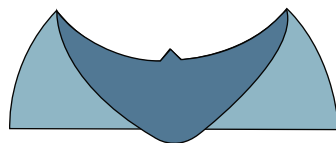


Fig. 3

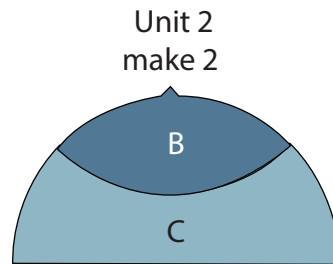


Fig. 4

5. Pin (1) Unit 1 piece to the top of (1) Unit 2 piece, with right sides together, along the curve, aligning the notches and the sewn seams on each piece (Fig. 5).

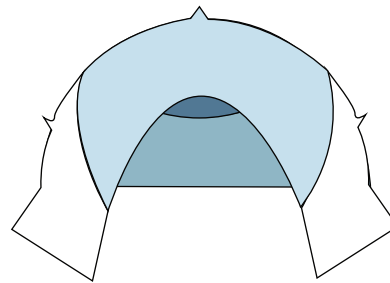
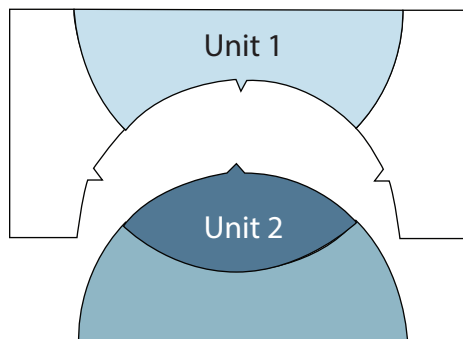


Fig. 5



WINDHAM FABRICS

[www.windhamfabrics.com](http://www.windhamfabrics.com)

# Titan

Page 6

6. With the Unit 1 on top, sew the two pieces together, to make (1) 6 ½" x 12 ½" Block One rectangle. Press towards Unit 1. Repeat to make (2) Block One rectangles total (Fig. 6).
7. Repeat Steps 1-6 and use Figures 7 through 16 for fabric identification and location to make (2) each of the block rectangles, Block Two rectangle through Block Ten rectangle except make (4) Block Five rectangles. There should be (24) blocks total.

Block One  
make 2

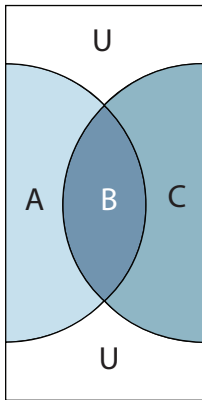


Fig. 6

Block Two  
make 2

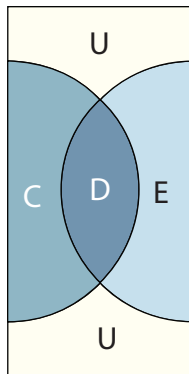


Fig. 7

Block Three  
make 2

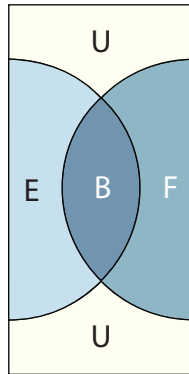


Fig. 8

Block Four  
make 2

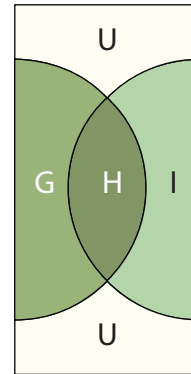


Fig. 9

Block Five  
make 4

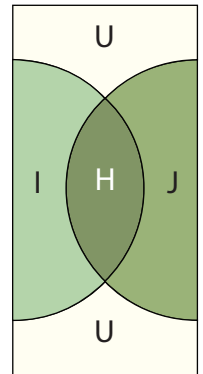


Fig. 10

Block Six  
make 2

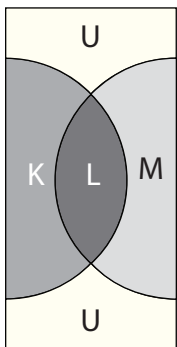


Fig. 11

Block Seven  
make 2

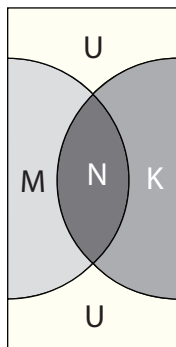


Fig. 12

Block Eight  
make 2

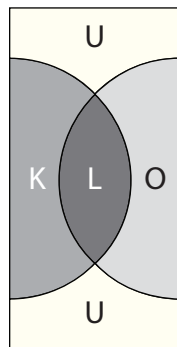


Fig. 13

Block Nine  
make 2

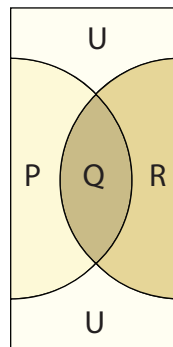


Fig. 14

Block Ten  
make 2

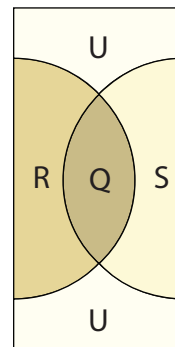


Fig. 15

Block Eleven  
make 2

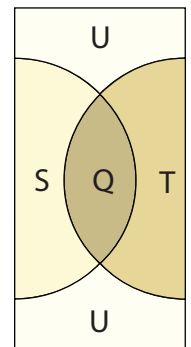


Fig. 16



WINDHAM FABRICS

[www.windhamfabrics.com](http://www.windhamfabrics.com)

# Titan

Page 7

## Quilt Top Assembly – Refer to the Quilt Layout on Page 9 while assembling the quilt top:

- Sew (1) Block One rectangle, (1) Block Two rectangle, (2) Block Three rectangles, (1) Block Two rectangle and (1) Block One rectangle together lengthwise and in that order to make Row One (Fig. 17).

Row One

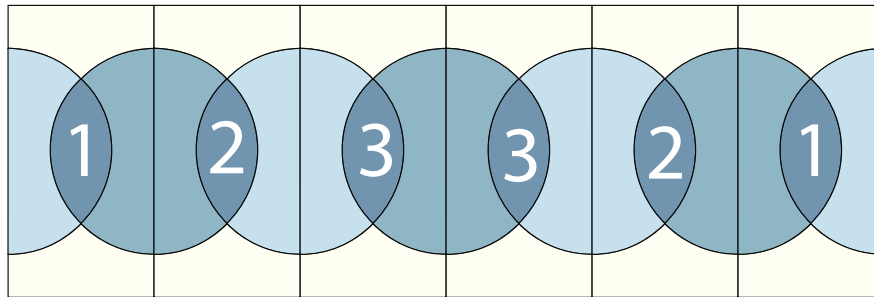


Fig. 17

- Sew (1) Block Four rectangle, (4) Block Five rectangles and (1) Block Four rectangle together lengthwise and in that order to make Row Two (Fig. 18).

Row Two

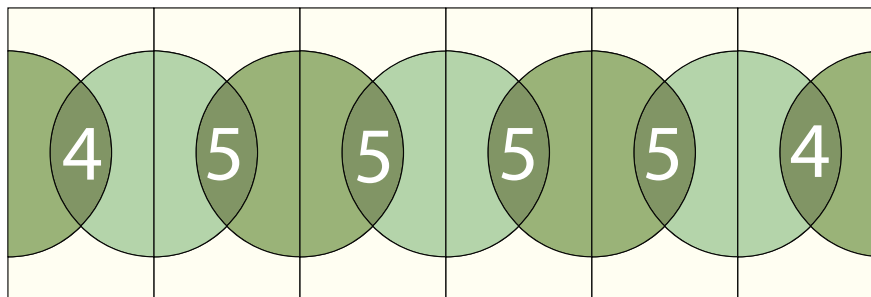


Fig. 18

- Sew (1) Block Six rectangle, (1) Block Seven rectangle, (2) Block Eight rectangles, (1) Block Seven rectangle and (1) Block Six rectangle together lengthwise and in that order to make Row Three (Fig. 19).

Row Three

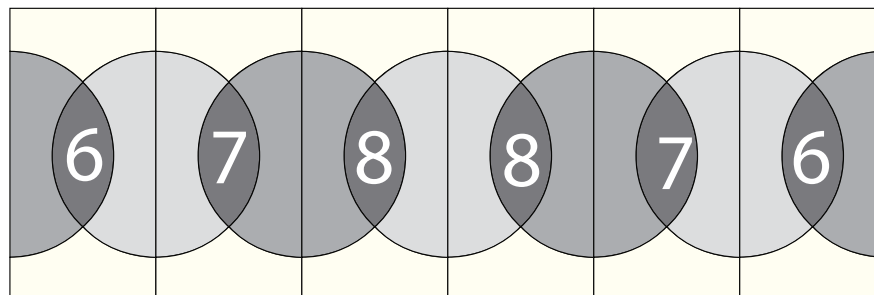


Fig. 19

# Titan

Page 8

11. Sew (1) Block Nine rectangle, (1) Block Ten rectangle, (2) Block Eleven rectangles, (1) Block Ten rectangle and (1) Block Nine rectangle together lengthwise and in that order to make Row Four (Fig. 20).

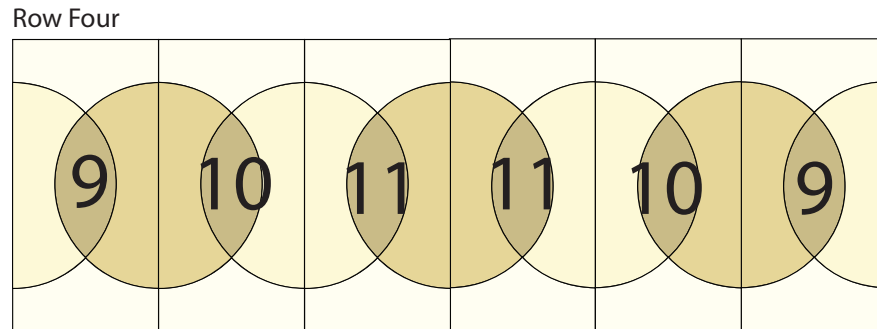


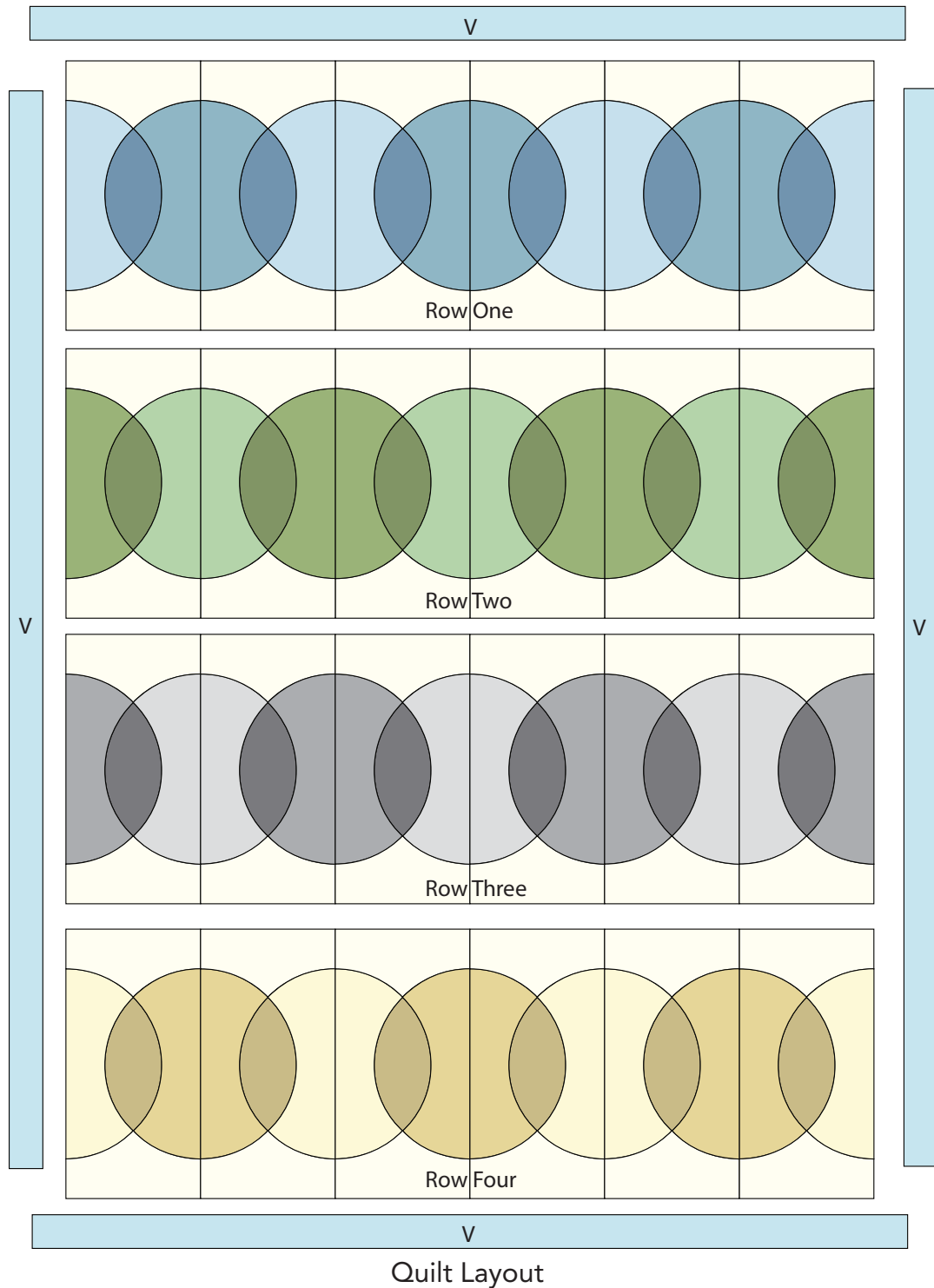
Fig. 20

12. Sew the (4) rows together in numerical order to make the Center Block.
13. Sew (1) 2" x 48 1/2" Fabric V strip to each side of the Center Block. Sew (1) 2" x 39 1/2" Fabric V strip to the top and to the bottom of the Center Block to make the quilt top.
14. Layer and quilt as desired.
15. Sew the (5) 2 1/2" x WOF Fabric D binding strips together, end to end with 45-degree seams, to make the binding. Fold this long strip in half lengthwise with wrong sides together and press.
16. Bind as desired.



# Titan

Page 9



Be sure to visit [www.windhamfabrics.com](http://www.windhamfabrics.com) to see the complete collection and to download this and other FREE Projects