

Bird in Tree + Three

Designed by Mary Koval

Featuring the Tree of Life ca 1830 Collections by Mary Koval

Size: 38" x 38"



Check www.windhamfabrics.com Free Project section to see if there are any pattern updates before you start your quilt project

WINDHAM FABRICS

812 Jersey Ave ~ Jersey City, NJ 07310 ~ 201.659.0444 ~ FAX: 201.659.9719
www.windhamfabrics.com email: retail@windhamfabrics.com

Bird in Tree + Three

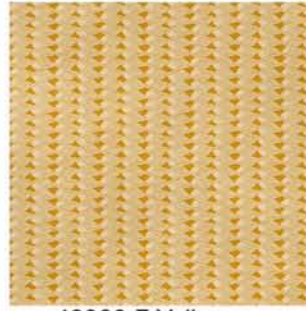
Page 2



40363-5 Red



40365-7 Yellow



40366-7 Yellow



40368-5 Red

MATERIALS:

2 yards of 40368-5 Red
1/4 yard of 40363-5 Red
3/8 yard of 40365-7 Yellow
3/8 yard of 40366-7 Yellow for binding
1-1/4 yards of backing
44" x 44" piece of batting
Clear template plastic cut to measure 12-1/2" x 12-1/2"

CUTTING:

From the 40368-5 Red, cut:
(4) 12-1/2" x 12-1/2" identical squares on point,
using the clear template plastic, to center the tree
of life motif as shown in Diagram 1
(2) 4-1/2" x 30-1/2" strips, cut lengthwise
(2) 4-1/2" x 38-1/2" strips, cut lengthwise

From the 40363-5 Red, cut:
(2) 1-1/2" x 24-1/2" strips
(2) 1-1/2" x 26-1/2" strips

From the 40365-7 Yellow, cut:
(2) 2-1/2" x 26-1/2" strips
(2) 2-1/2" x 30-1/2" strips

From the 40366-7 Yellow, cut:
(4) 2-1/2" x 42" strips

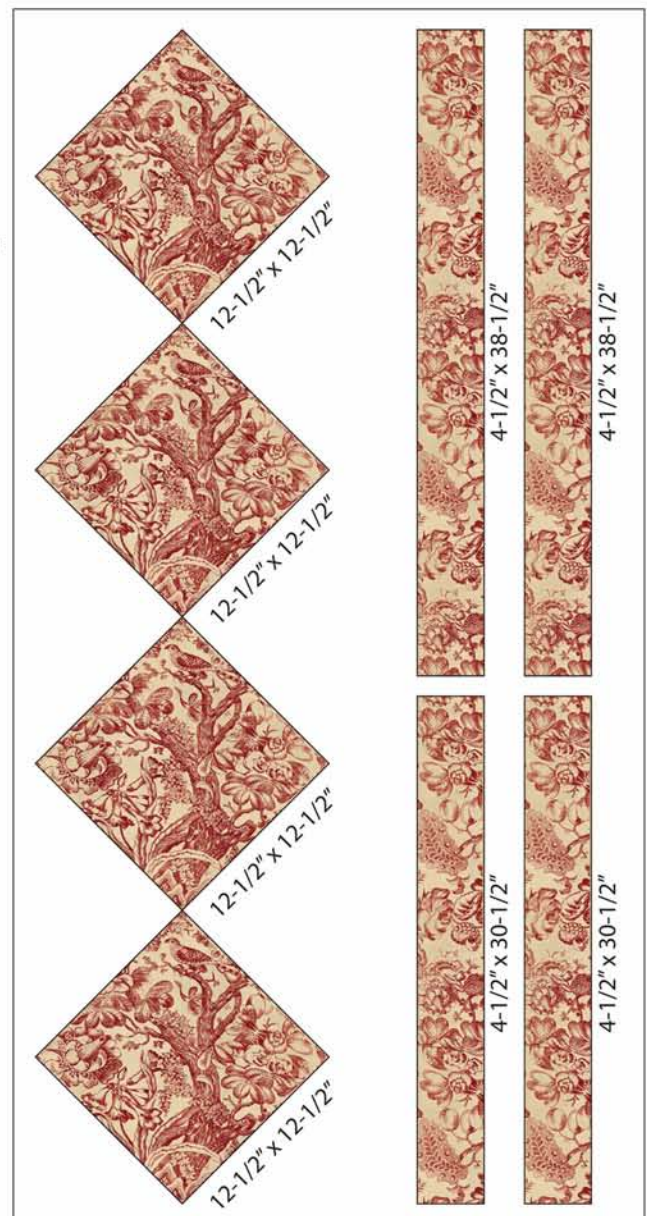


Diagram 1

Bird in Tree + Three

Page 3

INSTRUCTIONS:

Assembling the Quilt Center:

1. Lay out the (4) 12-1/2" x 12-1/2" 40368-5 Red squares in 2 rows of 2 squares each, noting the orientation of each square.
2. Sew the squares together in each row. Join the rows to make the 24-1/2" x 24-1/2" quilt center.

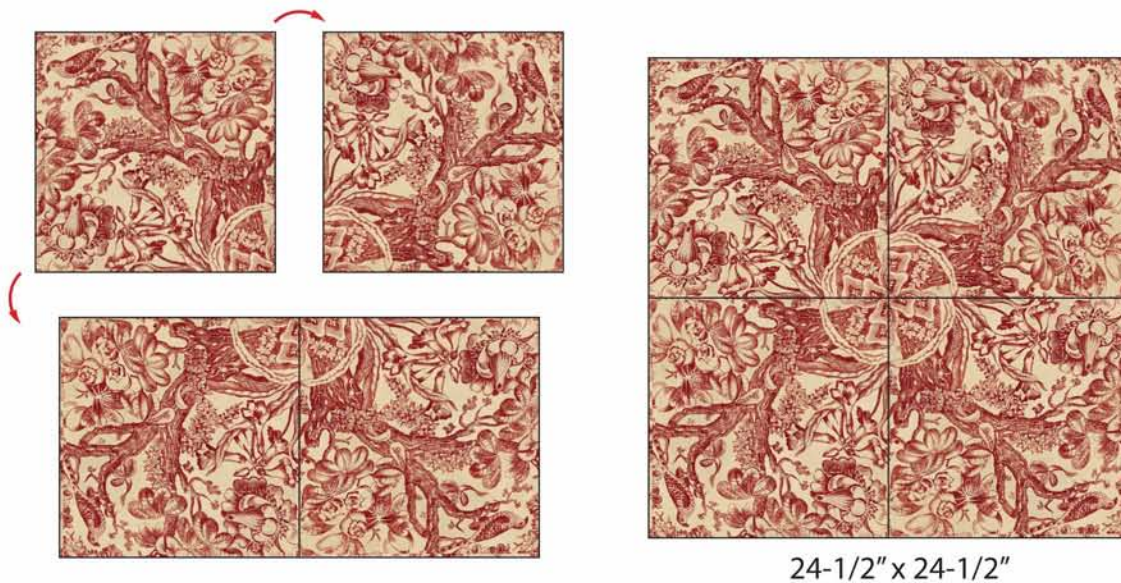


Diagram 2

Adding the Borders:

1. Sew (2) 1-1/2" x 24-1/2" 40363-5 Red strips to the sides of the quilt center.
2. Sew (2) 1-1/2" x 26-1/2" 40363-5 Red strips to the top and bottom of the quilt center.
3. Sew (2) 2-1/2" x 26-1/2" 40365-7 Yellow strips to the sides of the quilt.
4. Sew (2) 2-1/2" x 30-1/2" 40365-7 Yellow strips to the top and bottom of the quilt.
5. Sew (2) 4-1/2" x 30-1/2" 40368-5 Red strips to the sides of the quilt.

Bird in Tree + Three

Page 4

6. Sew (2) 4-1/2" x 38-1/2" 40368-5 Red strips to the top and bottom of the quilt to complete a 38-1/2" x 38-1/2" quilt top.



Diagram 3

Finishing the Quilt:

1. Layer the backing, batting and top and quilt as desired.
2. Bind the quilt using the (4) 2-1/2" x WOF 40366-7 Yellow binding strips.

Be sure to visit www.windhamfabrics.com to see the complete collection and to download this and other Free Projects