

Vines Abloom

ADVANCED
SKILL

Designed by Wendy Sheppard
featuring *Majesty* specialty collection by Jacqueline de Jonge
SIZE: 79-1/2" x 90-1/2"

PATTERN REQUIRES CURVED PIECING TECHNIQUE.



FREE
PROJECT

THIS IS A DIGITAL REPRESENTATION OF THE QUILT TOP, FABRIC MAY VARY.

PLEASE NOTE: BEFORE MAKING YOUR PROJECT, CHECK FOR ANY PATTERN UPDATES AT WINDHAMFABRICS.COM'S FREE PROJECTS SECTION.



Vines Abloom

PROJECT DISCLAIMER: Every effort has been made to ensure that all projects are error free. All the information is presented in good faith, however, no warranty can be given nor results guaranteed. Therefore, we assume no responsibility nor damages that may occur when referring to this pattern. When errors are brought to our attention, we make every effort to correct and post a revision as soon as possible. We suggest you check windhamfabrics.com for pattern updates and to test the pattern prior to making the project. **Test templates first, before cutting all the pieces. Free projects are not for resale.**

WOF = Width of Fabric

KEY	FABRIC	SKU	YD	CUTTING INSTRUCTIONS
A		3313Q-X Multi	1/2	Template 2: (6) pieces.
B		3317Q-X Taffy		
C		3316Q-X Lilac		
D		3315Q-X Taffy		
E		3307Q-X Black		
F		3314Q-X Taffy		
G		100Q-2040 Vibrant Plum		
H		3312Q-X Purple	3/4	Template 2: (7) pieces.
I		3310Q-X Purple		
J		3311Q-X Purple	3/4	Template 2: (8) pieces.
K		3308Q-X Purple		
L		3309Q-X Blue		
M		100Q-2066 Dark Olive	1-1/4	Binding: (9) 2-1/4" x WOF strips. (9) 1-1/2" x WOF strips. Piece strips and subcut (4) 1-1/2" x 90-1/2" strips.
N		3318Q-X White	8	Template 1: (160) pieces. (7) 1-1/2" x WOF strips. Piece strips and subcut (3) 1-1/2" x 90-1/2" strips.
		Backing	7-1/2	Batting: 88" x 99"

Additional Supplies: Plastic for templates and matching threads.



Vines Abloom

PIECED BLOCKS

All seams are 1/4".

Curved Piecing: Reference your favorite quilting source for curved piecing technique.

1. Make the following quantities, using (2) **N** Template 1 along with Template 2 from each of the following fabrics, as shown:

(6): **A, B, C, D, E, F** and **G**

(7): **H** and **I**

(8): **J, K** and **L**



Make (6) of each.



Make (7) of each.

Make (8) of each.

Square each block to 9-1/2"

QUILT TOP ASSEMBLY

- Referring to the **Quilt Assembly** diagram on Page 4 and noting block orientation, arrange and sew together (10) **Pieced Blocks** to make a column. Make (8) pieced columns.
- Sew together the (8) **Pieced Columns**, (4) **M** 1-1/2" x 90-1/2" and (3) **N** 1-1/2" x 90-1/2" sashing strips to complete quilt top.

FINISHING: Layer quilt top, batting and backing together to form quilt sandwich. Baste and quilt as desired. Bind using **M** 2-1/4" strips.



Vines Abloom

Quilt Assembly





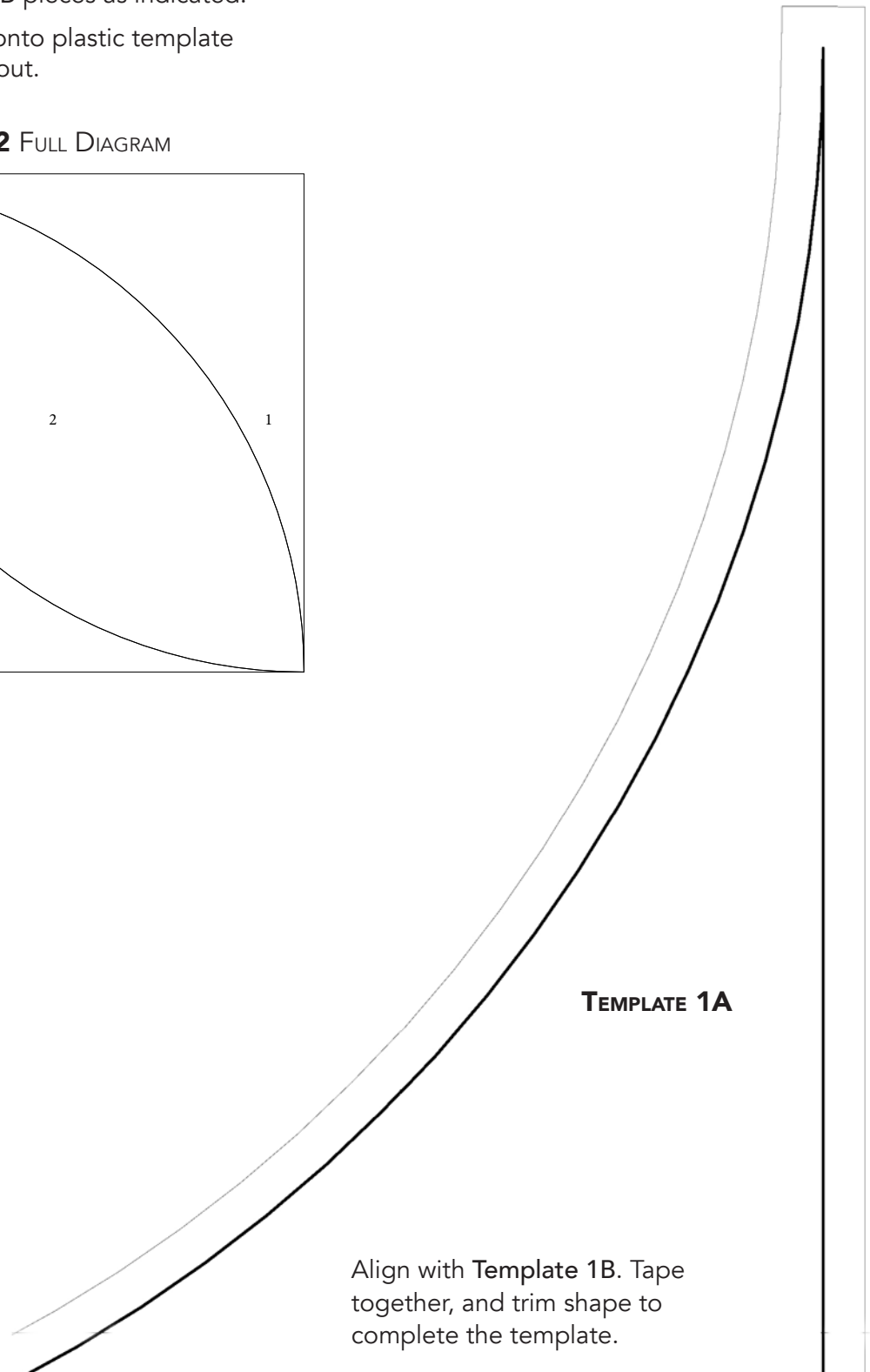
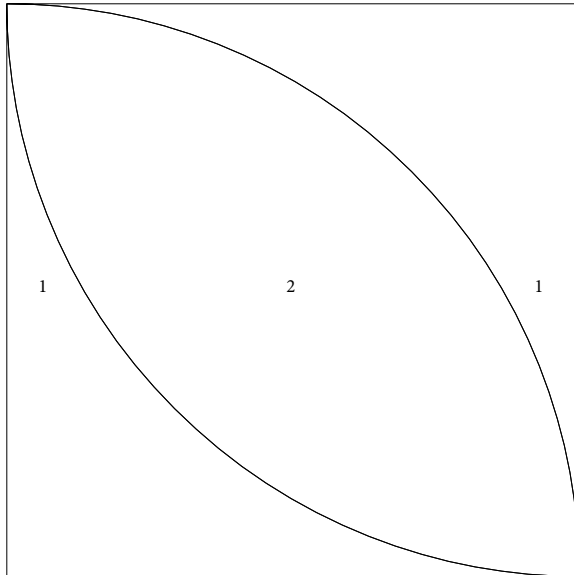
Vines Abloom

TEMPLATE 1

Print Templates at 100% scale. Join templates A and B pieces as indicated.

Trace templates onto plastic template material and cut out.

TEMPLATE 1 AND 2 FULL DIAGRAM

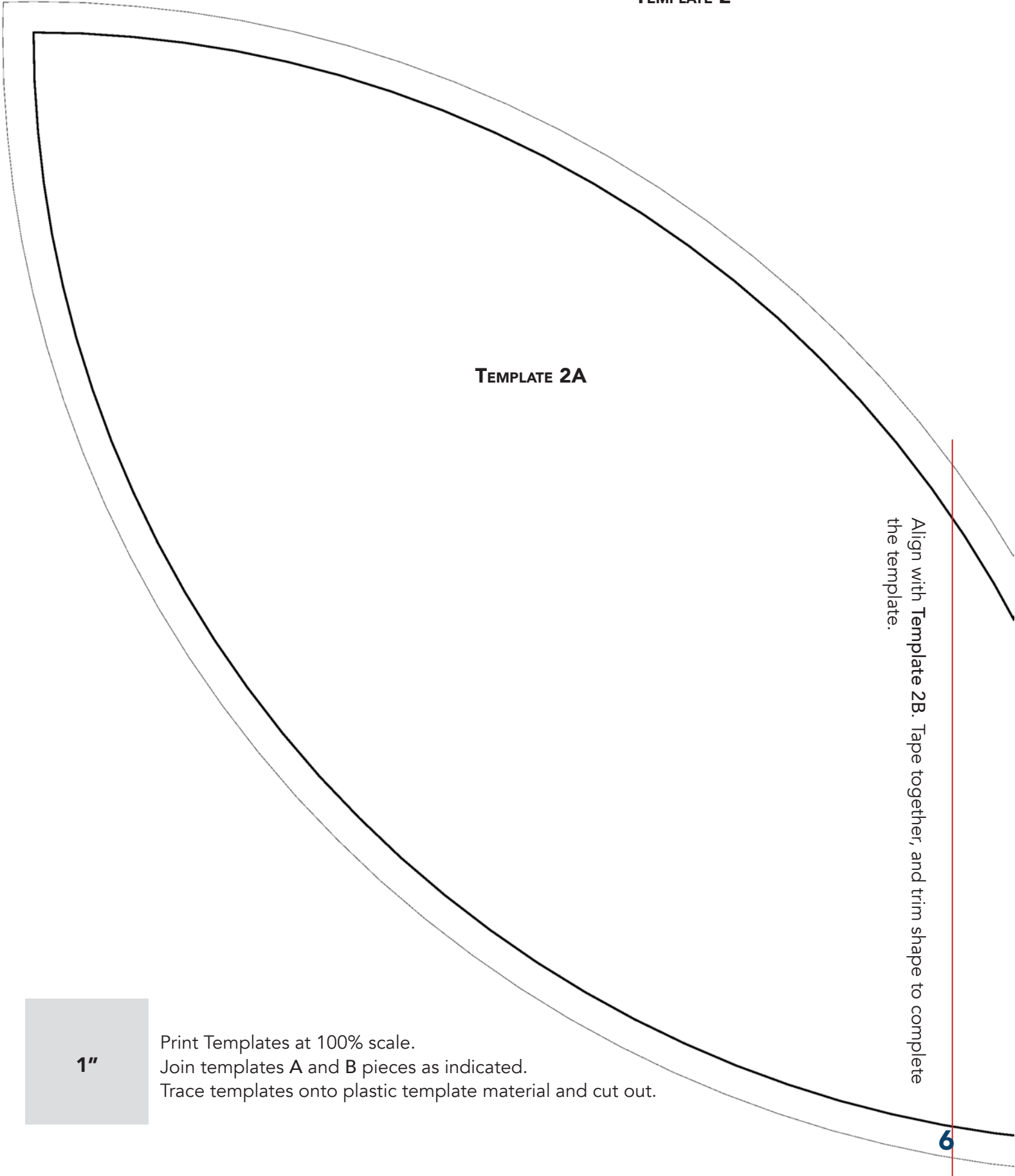


Align with Template 1B. Tape together, and trim shape to complete the template.



Vines Abloom

TEMPLATE 2



TEMPLATE 2A

Align with Template 2B. Tape together, and trim shape to complete the template.

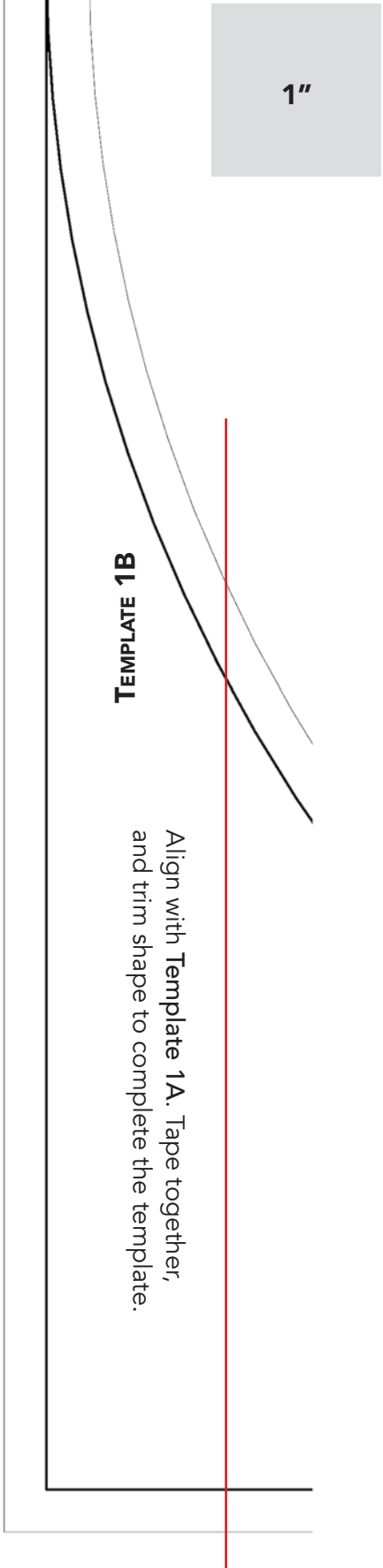


Print Templates at 100% scale.
Join templates A and B pieces as indicated.
Trace templates onto plastic template material and cut out.



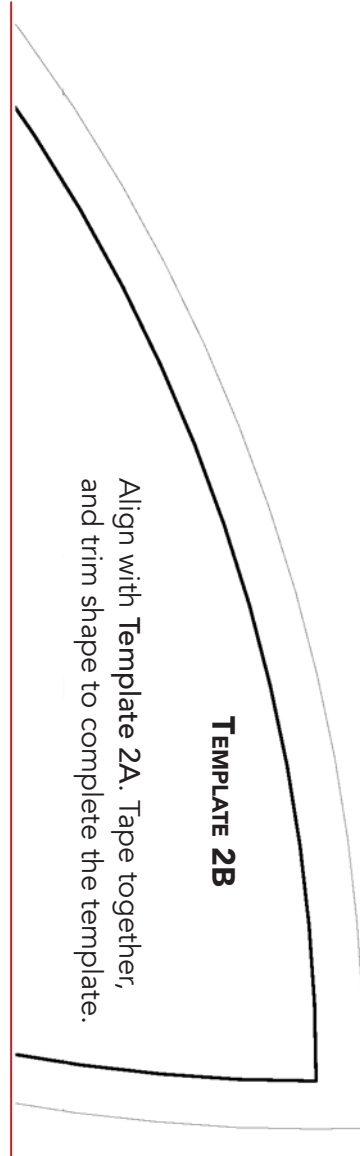
Vines Abloom

TEMPLATES 1 AND 2



TEMPLATE 1B

Align with Template 1A. Tape together, and trim shape to complete the template.



TEMPLATE 2B

Align with Template 2A. Tape together, and trim shape to complete the template.

Print Templates at 100% scale.
Join templates A and B pieces as indicated.

Trace templates onto plastic template material and cut out.