

“BALTIMORE SQUARE”

Designed by Debra Finan

Featuring the Baltimore Album Collection by Mary Koval



WINDHAM FABRICS

812 Jersey Ave ~ Jersey City, NJ 07310 ~ 201.659.0444 ~ FAX: 201.659.9719
www.windhamfabrics.com email: retail@windhamfabrics.com

“BALTIMORE SQUARE”

Designed by Debra Finan

Featuring the Baltimore Album Collection by Mary Koval

Quilt Size: 79½" square

Materials

Refer to fabric key to identify fabrics.

¼ yard each fabrics #1 and #16

½ yard fabric #15

¾ yard each fabrics #3, #4, #6, #7, #8, #13 and #14

1 yard each fabrics #9, #11

1¼ yards fabrics #2, #5, and #10

2 yards fabric #12 (includes binding)



Fabric Key

Cutting

Dimensions include ¼" seam allowances. Number fabrics from #1–#16. Cut all strips 2" wide across width of fabric unless otherwise noted.

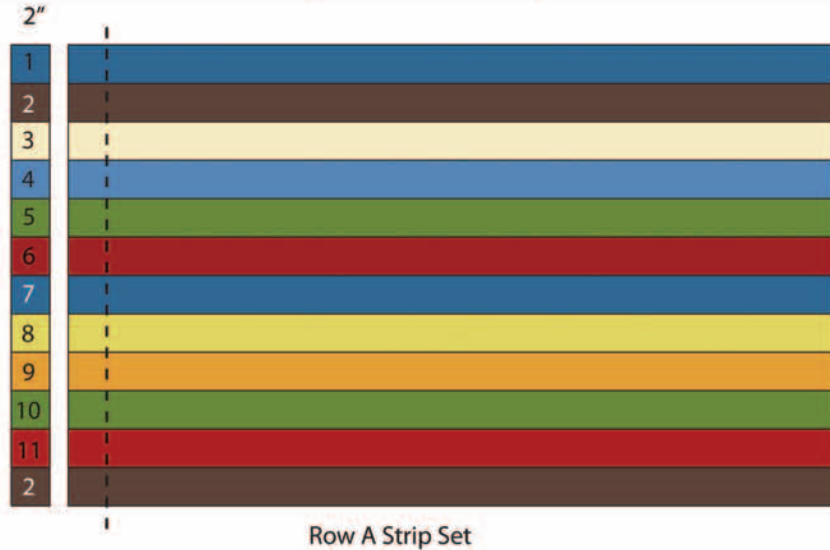
- Fabric #1: Cut 3 strips
- Fabric #2: Cut 16 strips and 12 (2") squares
- Fabric #3: Cut 9 strips
- Fabric #4: Cut 11 strips
- Fabric #5: Cut 18 strips and 13 (2") squares
- Fabric #6: Cut 8 strips
- Fabric #7: Cut 9 strips
- Fabric #8: Cut 10 strips
- Fabric #9: Cut 13 strips
- Fabric #10: Cut 18 strips
- Fabric #11: Cut 16 strips
- Fabric #12: Cut 20 strips and 9 (2¼"-wide) strips for binding.
- Fabric #13: Cut 10 strips
- Fabric #14: Cut 9 strips
- Fabric #15: Cut 7 strips
- Fabric #16: Cut 3 strips

“BALTIMORE SQUARE”

Page 2

Instructions

- Referring to Row A *Strip Set Diagram*, join 12 strips in order shown. Press seam allowances toward bottom of strip set. Cut 16 (2"-wide) segments from strip set.



Tip: Alternate pressing direction for every other strip set.

- In the same manner, make 1 strip set for each of Rows B through L for blocks. Cut 16 (2"-wide) segments from each strip set. Label each group of rows.
- Make 1 strip set for Sashing Row M. Cut 16 (2"-wide) segments from strip set.
- Make 2 strips sets for Sashing Row N. Cut 24 (2"-wide) segments from strip sets.
- Lay out 1 each Rows A through L as shown in Block Diagram. Join rows to make 1 block. Make 16 blocks.

	A	B	C	D	E	F	G	H	I	J	K	L																			
1	2	3	4	5	6	7	8	9	10	11	2																				
2		3	4	5	6	7	8	9	10	11	2	12																			
3			4	5	6	7	8	9	10	11	2	12	5																		
4				4	5	6	7	8	9	10	11	2	12	5	13																
5					4	5	6	7	8	9	10	11	2	12	5	13	14														
6						4	5	6	7	8	9	10	11	2	12	5	13	14	12												
7							4	5	6	7	8	9	10	11	2	12	5	13	14	12	15										
8								4	5	6	7	8	9	10	11	2	12	5	13	14	12	15	10								
9									4	5	6	7	8	9	10	11	2	12	5	13	14	12	15	10	4						
10										4	5	6	7	8	9	10	11	2	12	5	13	14	12	15	10	4	3				
11											4	5	6	7	8	9	10	11	2	12	5	13	14	12	15	10	4	3	16		
12												4	5	6	7	8	9	10	11	2	12	5	13	14	12	15	10	4	3	16	9

Block Diagram

Sashing M



Make 16 segments

Sashing N



Make 24 segments

“BALTIMORE SQUARE”

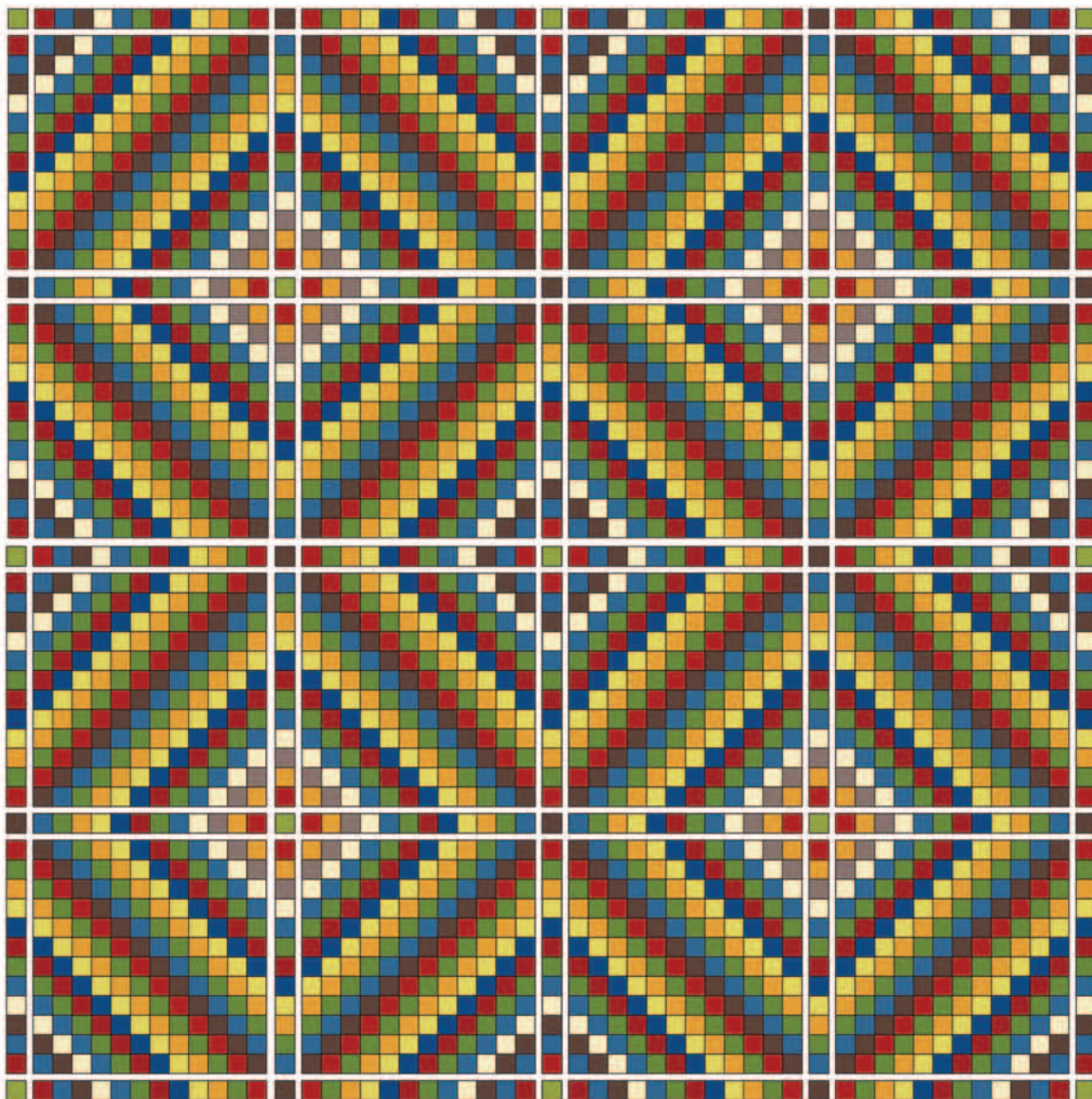
Page 3

Assembly

1. Lay out blocks in 4 rows of 4 as shown in *Assembly Diagram*. Place M and N Sashing rows and 2" squares between blocks and around outer edge of layout.
2. Sew blocks, sashing rows, and squares into rows. Join the rows to complete quilt top.

Tip: Staystitch around perimeter of quilt top within the ¼" seam allowance to keep seams from coming apart around edge.

3. Quilt top, batting and backing together as desired. Bind.



Assembly Diagram

Be sure to visit www.windhamfabrics.com to see the complete collection
and to download this and other Free Projects

WINDHAM FABRICS