

CHICAGO WORLD'S FAIR 1892

The World's Columbian Exposition (also called The Chicago World's Fair), was held in Chicago in 1893, to celebrate the 400th anniversary of Christopher Columbus's arrival in the New World. Chicago bested New York City, Washington, D.C. and St. Louis, Missouri, for the honor of hosting the fair. The fair had a profound effect on architecture, the arts, Chicago's self-image, and American industrial optimism. The Chicago Columbian Exposition was designed by Daniel Burnham and Frederick Law Olmsted. It was the prototype of what Burnham and his colleagues thought a city should be. It was designed to follow Beaux Arts principles of design, namely, European Classical Architecture principles based on symmetry and balance.

The exposition covered more than 600 acres, featuring nearly 200 new buildings of classical architecture, canals and lagoons, and people and cultures from around the world. Over 27 million people (equivalent to about half the U.S. population) attended the exposition during its six-month run. Its scale and grandeur far exceeded the other world fairs, and it became a symbol of the emerging American exceptionalism.

Dedication ceremonies for the fair were held on October 21, 1892, but the fairgrounds were not actually opened to the public until May 1, 1893. The fair continued until October 30, 1893. In addition to recognizing the 400th anniversary of the discovery of the New World, the fair also served to show the world that Chicago had risen from the ashes of the Great Chicago Fire, which had destroyed much of the city in 1871.

After the first ever world's fair in London in 1851, Chicago held this the 15th world's fair. However Chicago was only the 4th US city to host a world's fair, this after New York in 1853 (the 2nd world's fair), Philadelphia in 1876 (the 8th world's fair), and New Orleans in 1884 (the 10th world's fair).



(C) Karen Witt/Reproduction Quilts 2009

For More Info Visit www.reproductionquilts.com or call 859-333-6232

Be sure to visit www.windhamfabrics.com to see the complete collection and to download this and other Free Projects

WINDHAM FABRICS

812 Jersey Ave ~ Jersey City, NJ 07310 ~ 201.659.0444 ~ FAX: 201.659.9719 ~ info@windhamfabrics.com

CHICAGO WORLD'S FAIR 1892

Designed by Karen Witt
Featuring the World's Fair Collection by Nancy Gere



WINDHAM FABRICS

CHICAGO WORLD'S FAIR 1892

Designed by Karen Witt
 Featuring the World's Fair Collection by Nancy Gere
 Quilt Size: 68 3/8" X 68 3/8"
 (25) 10" blocks

Fabric Requirements

Fabric SKU	Description	Yards	Use in Quilt
31181-X	Large print	5/8	Center block, four other blocks
31189-4	Brown print	2 1/2	Sashing, binding
31186-5	Pink print	1/2	Keystones, piecing
	Miscellaneous Prints	1/4 each	Piecing
31182-1, 31182-2, 31183-3, 31184-2, 31185-2, 31186-3, 31187-4, 31188-2, 31190-3, 31190-4, 31191-3, 31192-3			

Cutting Directions

Fabric SKU	Cut
31181-X	Select image for large center block. Fussy cut (1) 10 1/2" X 10 1/2" square
	Select images for alternate blocks. Fussy cut (4) 6 1/2 X 6 1/2" squares, for centers of (4) smaller pieced blocks
31189-4	(22) 2 1/2" strips across width of fabric. Then Cut (64) 2 1/2" X 10 1/2" strips
	Cut (7) 2 1/4" strips across width of fabric. Piece as necessary to make approximately 280" of binding
31186-5	(3) 2 1/2" strips across width of fabric Then Cut (40) 2 1/2" X 2 1/2" squares



Cutting Directions con't

Fabric SKU	Cut
31182-1, 31182-2, 31183-3, 31184-2 31185-2, 31186-3, 31187-4, 31188-2, 31190-3, 31190-4, 31191-3, 31192-3,	Assortment of 2 1/2" strips across width of fabric Cut light, medium and dark fabric strips into 2 1/2" squares. Then Cut light fabric strips into 2 1/2" X 6 1/2" strips for borders around Nine Patch blocks.

IMPORTANT: Your quilt will differ from quilt pictured, depending upon choices of fabrics used for piecing the Nine Patch blocks and fabrics selected for the borders around the blocks

Instructions

Alternate blocks

- Referring to Diagram 1, select (1) 6 1/2" square.
Sew (1) 2 1/2" X 6 1/2" light fabric strip to opposite sides.



Diagram 1

- Referring to Diagram 2, sew (1) 2 1/2" square to each end of (1) 2 1/2" X 6 1/2" light fabric strip. Repeat to make a second unit.



Figure 2

Sew (1) unit to each side of quilt block.

CHICAGO WORLD'S FAIR 1892

Instructions con't

- Repeat to make (4) alternate blocks, as shown in Diagram 3.



Diagram 3

Nine Patch Blocks

- Select (4) light or medium 2 1/2" squares, all from the same fabric. Select (5) medium or dark 2 1/2" squares, all from the same fabric. Arrange as a Nine Patch block and stitch together, referring to Diagram 4.

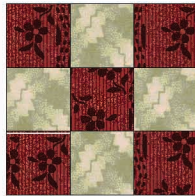


Diagram 4

- Sew (1) 2 1/2" X 6 1/2" light fabric strip to opposite sides.
- Sew (1) 2 1/2" square to each end of (1) 2 1/2" X 6 1/2" light fabric strip. Repeat to make a second unit.



Sew (1) unit to each side of quilt block.

- Referring to Diagram 5, repeat to make (20) blocks



Diagram 5

Partial Blocks

- Referring to Diagram 6 below, use (9) 2 1/2" squares and (2) 2 1/2" X 6 1/2" light fabric strips to make (1) side block for the outside edges of the quilt. Repeat to make (12) partial side blocks.

Diagram 6



Side Block

Diagram 6 represents the bottom edge of the quilt top.

- Referring to Diagram 7, use (4) 2 1/2" squares and (1) 2 1/2" X 6 1/2" light fabric strips to make (1) corner block. Repeat to make (12) partial corner blocks.

Diagram 7



Diagram 7 represents the lower right corner of the quilt.

Assembly

- Referring to quilt picture, arrange center block, alternate blocks, Nine Patch blocks, partial side blocks and partial corner blocks. Stitch together.
- Layer and quilt as desired. IMPORTANT: Quilting before trimming will reduce stretching along the edges.
- After quilting, "stay-stitch" a scant 1/4" from outside edge of quilt to stabilize and in preparation for trimming excess.
- Trim quilt edges. Quilt top should measure 68 5/8" X 68 5/8".
- Bind as desired.

ENJOY!