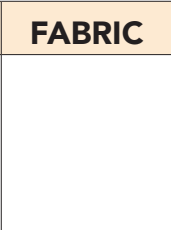


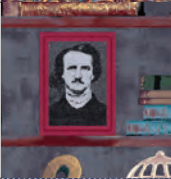








Evening Reading

WOF = Width of Fabric

KEY	FABRIC	SKU	YD	CUTTING INSTRUCTIONS
A		31835S White	2-1/2	(42) 1-1/2" x WOF strips. Reserve for strip piecing. (7) 3" x WOF strips. Piece strips and subcut (2) 3" x 57-1/2" and (2) 3" x 65-1/2" strips.
B		52871-8 Scarlet	3/8	(1) 8-1/2" x WOF strips; subcut (4) 8-1/2" squares.
C		52871-1 Marine	3/8	(1) 8-1/2" x WOF strips; subcut (4) 8-1/2" squares.
D		52867-1 Marine	1-1/8	(1) 8-1/2" x WOF strips; subcut (4) 8-1/2" squares. (7) 3-1/2" x WOF strips. Piece strips and subcut (2) 3-1/2" x 63-1/2" and (2) 3-1/2" x 70-1/2" strips.
E		40171-24 Navy-White	7/8	(18) 1-1/2" x WOF strips. Reserve for strip piecing.
F		52872-10 Black	1-3/8	Binding: (8) 2-1/4" x WOF strips. (15) 1-1/2" x WOF strips. Reserve for strip piecing.
G		52868-2 Aged Paper	3/8	(1) 8-1/2" x WOF strips; subcut (4) 8-1/2" squares.
H		52869-3 Slate	3/8	(1) 8-1/2" x WOF strips; subcut (4) 8-1/2" squares.
		Backing	4	Batting 71" x 84"

PROJECT DISCLAIMER: Every effort has been made to ensure that all projects are error free. All the information is presented in good faith, however, no warranty can be given nor results guaranteed. Therefore, we assume no responsibility nor damages that may occur when referring to this pattern. When errors are brought to our attention, we make every effort to correct and post a revision as soon as possible. We suggest you check windhamfabrics.com for pattern updates and to test the pattern prior to making the project. Test templates first, before cutting all the pieces. Free projects are not for resale.

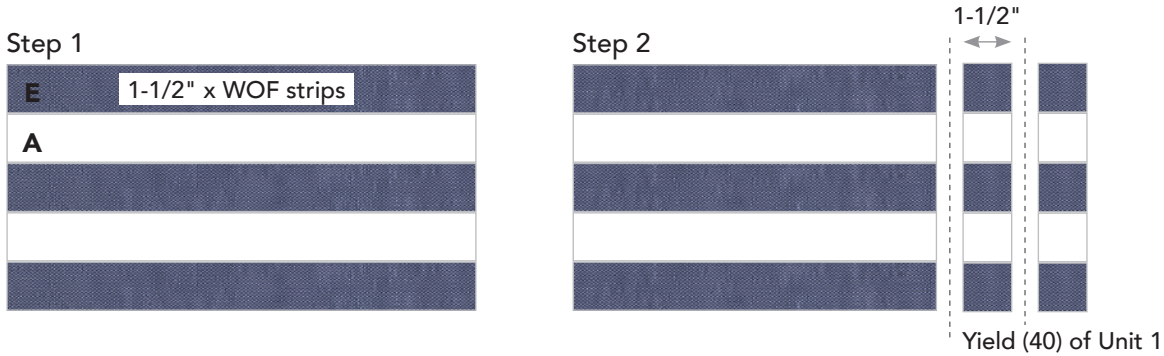


Evening Reading

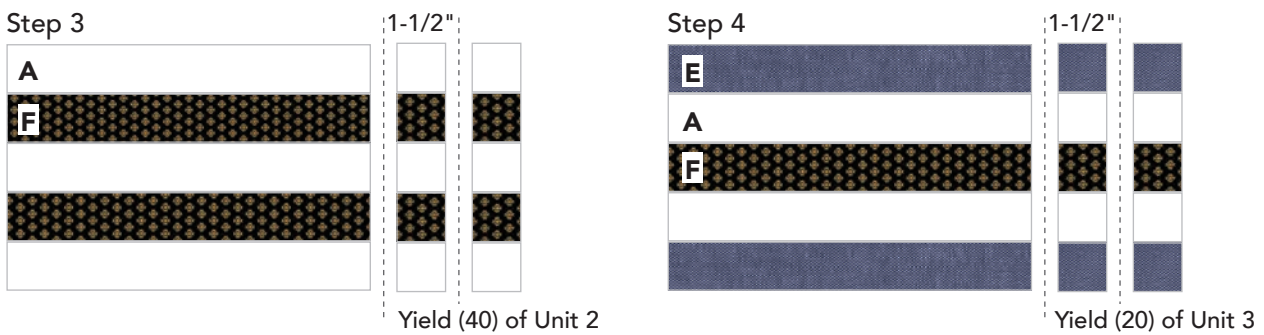
PIECED BLOCK

25-PATCH UNIT

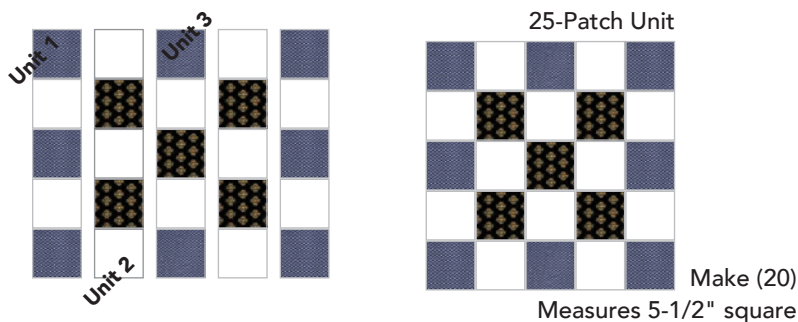
1. Unit 1: Sew together alternating (3) **E** and (2) **A** 1-1/2" x WOF strips along the long sides to make (1) strip set as shown. Make (2) strip sets.
2. Subcut strip sets at 1-1/2" intervals to yield (40) Unit 1.



3. Unit 2: Repeat Steps 1-2 using (3) **A** and (2) **F** 1-1/2" x WOF strips. Yield (40) Unit 2.
4. Unit 3: Sew together (2) **A**, **E** and (1) **F** 1-1/2" x WOF strips as shown to make (1) strip set. Yield (20) Unit 3.



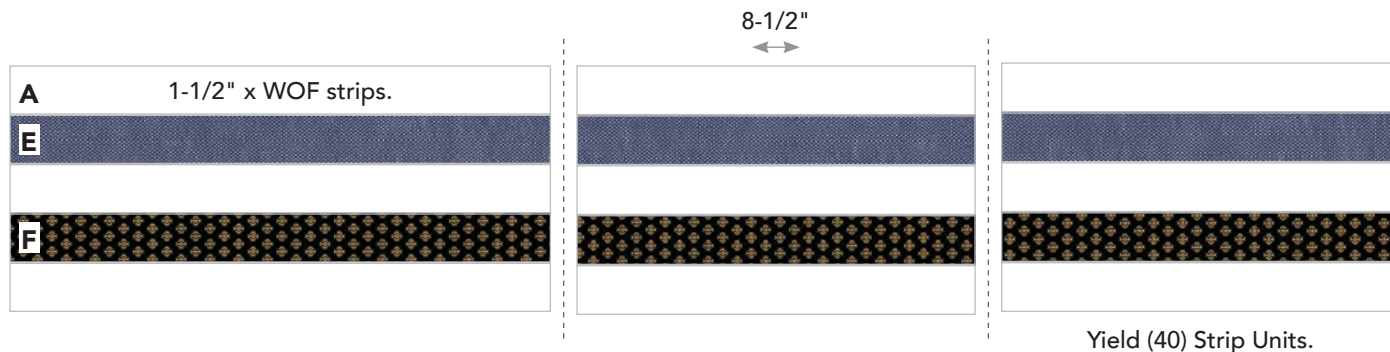
5. Sew together (2) Units 1 and 2, and (1) Unit 3, as shown, to make a 25-Patch Unit measuring 5-1/2" square. Make (20).





Evening Reading

6. **Strip Unit:** Sew together (3) **A**, (1) **E** and (1) **F** 1-1/2" x WOF strips along the long sides to make a strip set. Make (10) strip sets. Subcut strip sets at 8-1/2" intervals to yield (40) Strip Units.



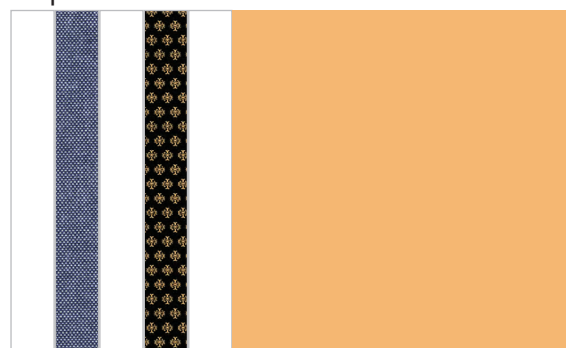
NOTE FABRIC ROTATION AND PLACEMENT ON THE FOLLOWING BLOCKS.

7. Sew together (1) Strip Unit and (1) print fabric 8-1/2" square to make a row unit.
8. Sew together (1) 25-Patch Unit and (1) Strip Unit to make a row unit.
9. Sew together row units, as shown, to complete (1) Pieced Block measuring 13-1/2" square.

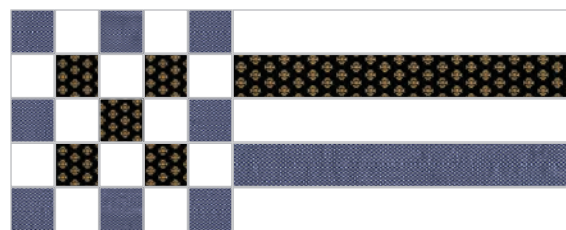
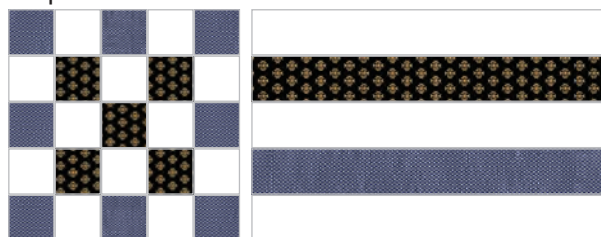
Step 6



Step 8



Step 7



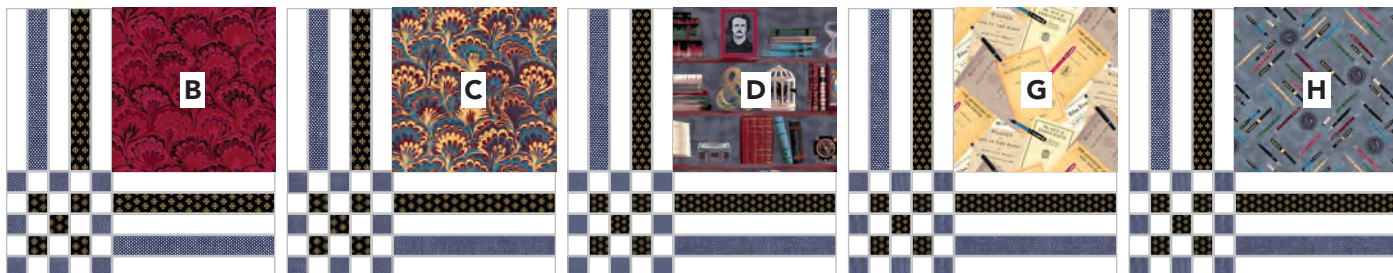
Measures 13-1/2" square



Evening Reading

10. Make (4) blocks each using **B**, **C**, **D**, **G**, and **H** 8-1/2" squares.

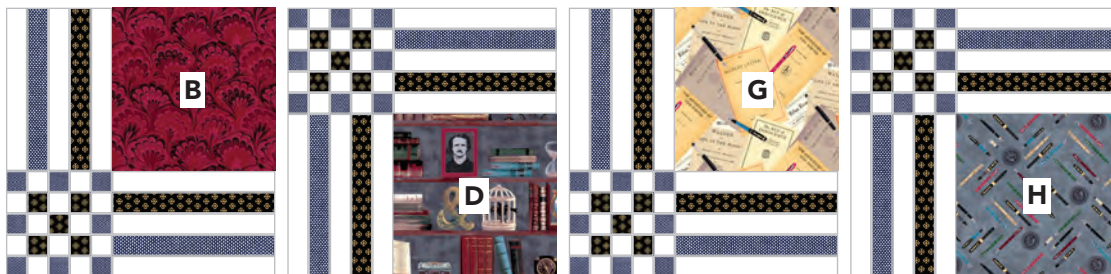
NOTE: Fabrics **B**, **C**, and **H** are directional. For these blocks, assemble one in each direction, referring to quilt image.



QUILT ASSEMBLY

11. Pieced Rows: Refer to quilt image on Page 5 for block placement and orientation guide. Arrange and sew together (4) pieced blocks to make a pieced row. Make (5) pieced rows.

Row 1 is shown below.



BORDERS

12. Inner Border: Sew (2) **A** 3" x 65-1/2" strips to the opposite long sides of Quilt Center, followed by (2) **A** 3" x 57-1/2" strips to the remaining opposite short sides of Quilt Center.
13. Outer Border: Sew (2) **D** 3-1/2" x 70-1/2" strips to the opposite long sides of Quilt Center, followed by (2) **D** 3-1/2" x 63-1/2" strips to the remaining opposite short sides of Quilt Center to complete quilt top.



Evening Reading

Quilt Assembly



FINISHING: Layer quilt top, batting and backing together to form quilt sandwich. Baste and quilt as desired. Bind using **F** 2-1/4" strips.