

# ISABELLE

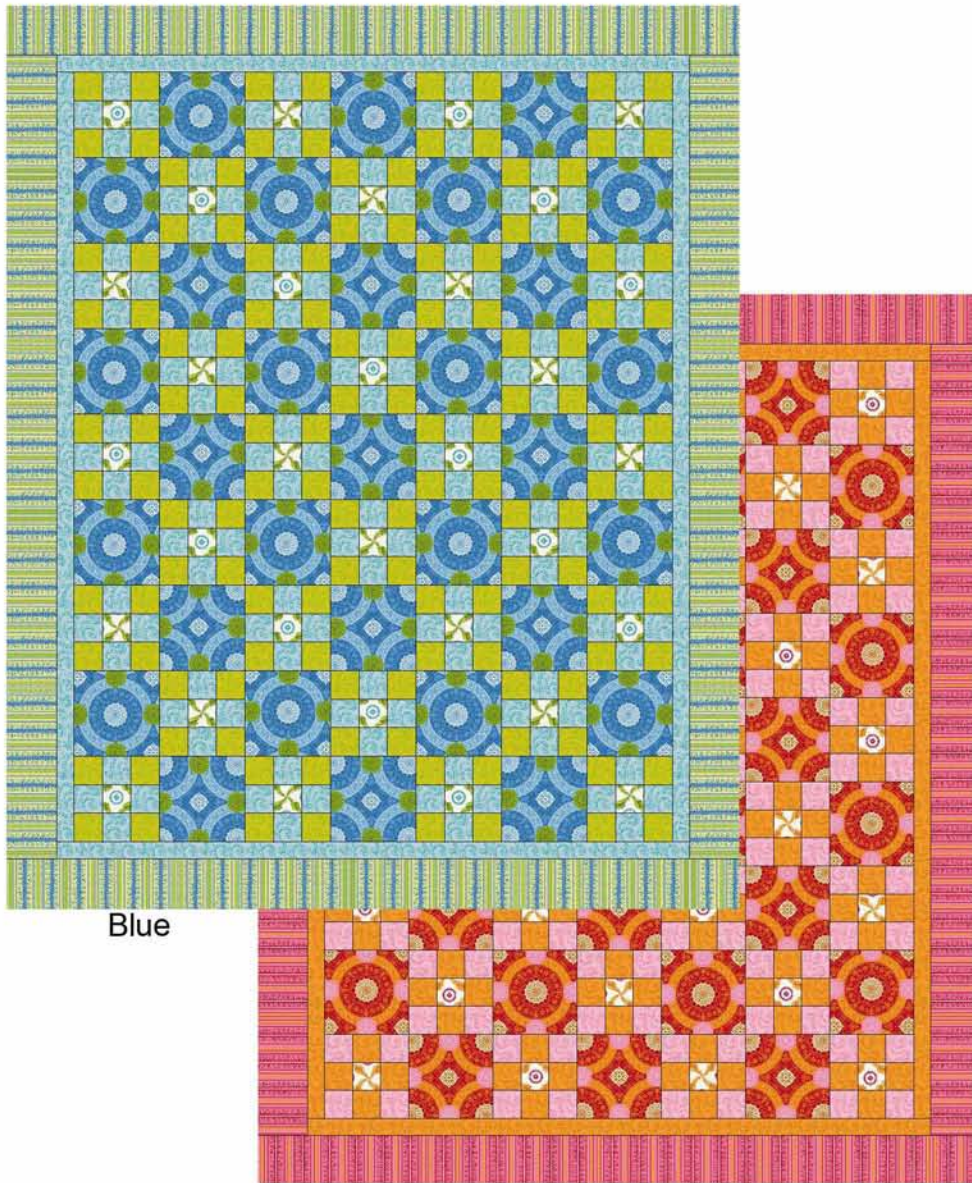
# ISABELLE

REVISED

ANNA  GRIFFIN®

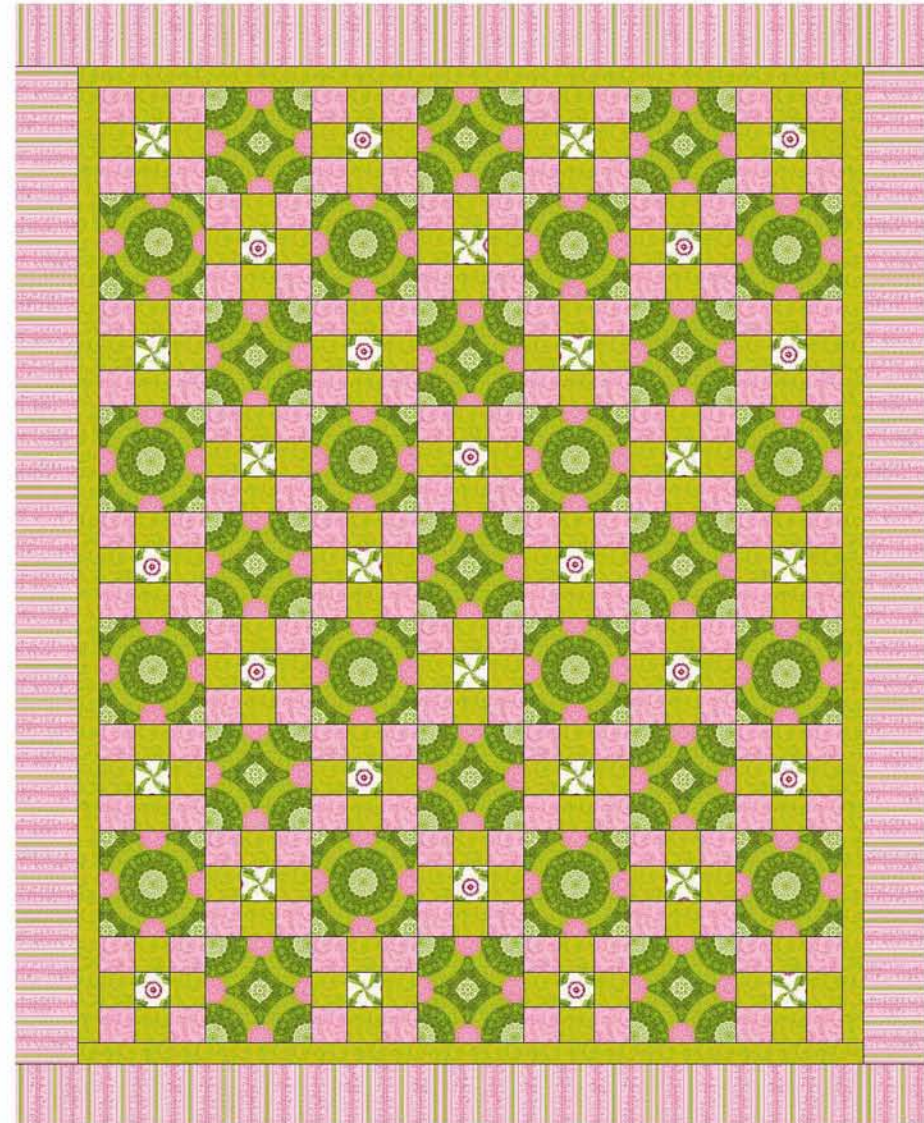
Try another Version of the quilt

Designed by Joanie Holton & Melanie Greseth  
Featuring fabric from the Isabelle Collection by Anna Griffin



Blue

Orange



Be sure to visit [www.windhamfabrics.com](http://www.windhamfabrics.com) to see the complete collection  
and to download this and other Free Projects

 WINDHAM FABRICS

812 Jersey Ave ~ Jersey City, NJ 07310 ~ 201.659.0444 ~ FAX: 201.659.9719 ~ [info@windhamfabrics.com](mailto:info@windhamfabrics.com)

 WINDHAM FABRICS

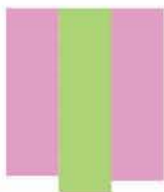
# THE ISABELLE COLLECTION

Designed by Joanie Holton & Melanie Greseth  
Featuring fabrics from the Isabelle Collection by Anna Griffin  
Quilt size: 43" x 53"

FABRIC	YARDAGE	CUTTING INSTRUCTIONS
Pink Version		
30793-2 Pink	1-1/4 yd	Cut (8) 2-1/8" x WOF strips, (5) 2-1/2" x WOF binding
30792-2 Pink	1/3 yd	Cut (32) fussy cut 2-1/8" squares
30795-2 Pink	1 yd	Cut (5) 3-1/2" x WOF strips – outer border
30793-4 Green	7/8 yd	Cut (8) 2-1/8" x WOF strips – sub cut (4) of these strips into (64) 2-1/8" squares
30797-4 Green	1-1/4 yd	(5) 1-1/2" x WOF strips – inner border Cut (32) fussy cut 5-1/2" squares

## 9-patch square blocks:

Sew two 2-1/8" pink swirl strips to either side of one 2-1/8" green swirl strip.  
Press. Make 4 of these sets.



Sub cut these strip sets into 2-1/8" strips. (Set A)



Sew two green 2-1/8" squares to either side of the fussy cut white 2-1/8" squares.  
Repeat to make (32) Set B.



Sew (2) Set A to the top and bottom (1) Set B to make your nine patch block.  
Make 32 blocks. Blocks should be 5-1/2", trim to square if needed.



Lay seven blocks across, starting with a nine patch block and alternating with the 5-1/2" fussy cut square.

Sew blocks together to complete row. Repeat to make (5) Row X.  
Lay seven blocks across, starting with a 5-1/2" fussy cut square and alternating with a nine patch block. (You may need to ease the blocks to fit)  
Sew blocks together to complete row. Repeat to make (4) Row Y.

Refer to quilt picture for reference, layout rows starting with Row X and alternating with Row Y. Sew rows together to complete quilt center.

Refer to quilt picture for reference, layout rows starting with Row X and alternating with Row Y. Sew rows together to complete quilt center.

## BORDERS:

### Inner Border:

Sew (2) green 1-1/2" strips together end to end. Sew the strip to the right side of the quilt center, trim even with the quilt top. Sew the extra to another 1-1/2" green strip. Sew to the left side of quilt center.

Sew the remaining green strips to the top and bottom of the quilt center.

### Outer Border:

Sew (2) pink/green stripe 3-1/2" strips together end to end. Sew the strip to the right side of the quilt center, trim even with the quilt top. Sew the extra to another 3-1/2" green strip. Sew to the left side of quilt center. Sew the remaining green strips to the top and bottom of the quilt center.

Sandwich quilt top, batting and backing. Quilt and bind.

ENJOY!

## PATTERNS FOR THE OTHER COLORWAYS

### Pink Quilt



30793-2



30792-2



30795-2



30793-4



30797-4

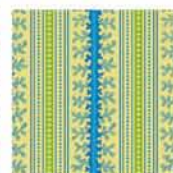
### Blue Quilt



30793-4



30792-1



30795-1



30793-1



30797-1

### Orange Quilt



30793-2



30792-3



30795-3



30793-3

