

# Juliet

# Juliet

Designed by Jean Ann Wright  
Featuring fabric from the Juliet Collection

REVISED

by  
Raige Stanley Miller

5. Sew the short fabric E borders to opposite sides of the quilt center. Sew the longer fabric E borders to the top and bottom of the quilt center.
6. Sew the fabric D borders to the quilt top in the same manner as step 5.
7. Sew the fabric C borders to the quilt top in the same manner as step 5.
8. Layer the quilt top, batting and backing. Quilt the layers together.
9. Sew the fabric D binding strips together end-to-end. Fold the binding strips in half lengthwise and press fold line. Align raw edges of binding to raw edges of quilt top. Sew in place. Turn folded edge to back and stitch in place. ENJOY!

## Print Patterns used in this Quilt



30896-1 Blue



30897-1 Blue



30898-1 Blue



30899-1 Blue



30900-1 Blue



30900-5 Yellow



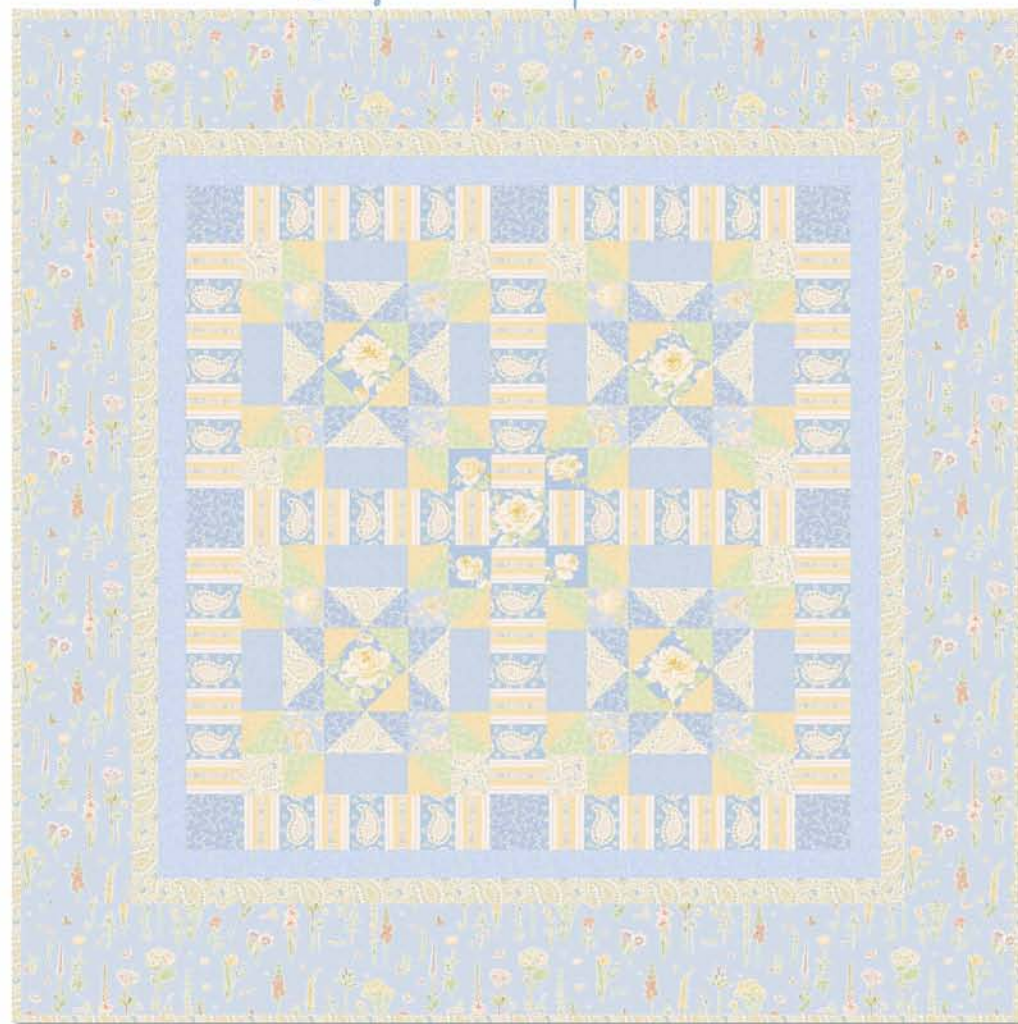
30901-1 Blue



30901-3 Green



30902-1 Blue



Be sure to visit [www.windhamfabrics.com](http://www.windhamfabrics.com) to see the complete collection  
and to download this and other Free Projects

WINDHAM FABRICS

812 Jersey Ave ~ Jersey City, NJ 07310 ~ 201.659.0444 ~ FAX: 201.659.9719 ~ [info@windhamfabrics.com](mailto:info@windhamfabrics.com)

WINDHAM FABRICS

# Juliet

Designed by Jean Ann Wright

Featuring fabric from the Juliet Collection by Paige Stanley Miller

Quilt Size: 84" x 84"

Block Size: 24" x 24"

## Materials

1/2 yd Fabric A - 30896-1

Fussy cut (4) 6-1/4" squares centering a rose in each square

Fussy cut (5) 4-1/2" squares centering a small rose in each square

1 3/4 yd Fabric B 30897-1 Blue

Cut (12) 4-1/2" x 24-1/2" sashing strips

2 1/8 yd Fabric C 30898-1 Blue

Cut (9) 8-1/2" x wof strips, sew together end-to-end and recut into (2) strips a 68-1/2" long for side borders and (2) strips 84-1/2" long for horizontal borders

2 1/4 yd Fabric D 30899-1 Blue

Cut (12) 4-1/2" squares for blocks

Cut (4) 9-1/4" squares, recut on diagonal twice to make (4) triangles from each square for a total of (16) triangles.

Cut (9) 2-1/2" x wof strips, sew together end-to-end for borders, recut into (2) 64-1/2" vertical borders and (2) 68-1/2" horizontal borders

Cut (10) 2-1/4" x wof strips for binding

1 1/4 yd Fabric E 30900-1 Blue

Cut (16) 4-1/2" x 8-1/2" rectangles

Cut (9) 2-1/2" x wof strips, stitch together end-to-end and recut into (2) 60-1/2" vertical borders and (2) 64-1/2" horizontal borders

1/2 yd Fabric H 30900-5 Yellow

Cut (20) 4-7/8" squares, cut in half on diagonal once to make (40) triangles

1/2 yd Fabric I 30901-1 Blue

Cut (8) 4-1/2" sashing squares

Cut (16) 4-7/8" squares, cut in half on diagonal once to make (32) triangles

1/2 yd Fabric J 30901-3 Green

Cut (20) 4-7/8" squares, cut in half on diagonal once to make (40) triangles

1/3 yd Fabric K 1/3 yd 30902-1 Blue

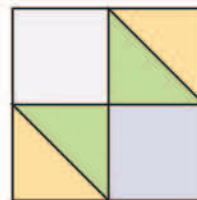
Cut (16) 4-1/2" squares for blocks

\*Backing fabric

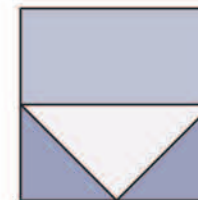
5-3/4 yds 30901-1 blue Cut in half and sew together to make a large square for backing.

## Quilt Assembly

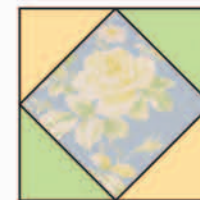
1. Following the unit diagrams, sew the corner units, side units and center units together. Arrange the units as shown in the block diagram and sew the block together. Make 4 blocks.



Corner Unit  
Make 4

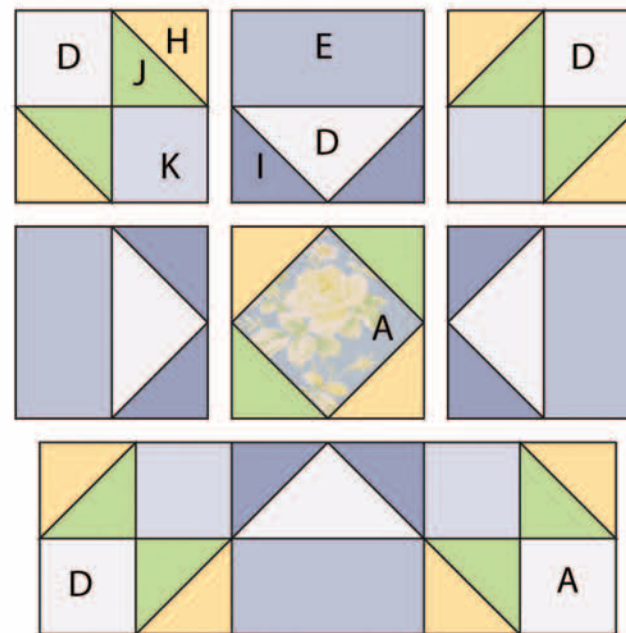


Side Unit  
Make 4



Center Unit  
Make 1

2. Sew the blocks into (2) rows of (2) blocks each, separating the blocks 3 sashing strips. Make 2 rows.



Block Diagram

3. Sew top and bottom sashing rows with (3) sashing squares I and (2) sashing strips. Sew the center sashing row with (2) sashing strips, (2) sashing squares I and (1) sashing square A in the center.
4. Alternate the (3) sashing rows with the (2) block rows to complete the center section of the quilt top.