

“Lizzie Hearts”

Designed by Melanie Greseth & Joanie Holton
Featuring the Lizzie Collection by

REVISED

A N N A



G R I F F I N



WINDHAM FABRICS

812 Jersey Ave ~ Jersey City, NJ 07310 ~ 201.659.0444 ~ FAX: 201.659.9719 ~ info@windhamfabrics.com

“Lizzie Hearts”

Designed by Melanie Greseth & Joanie Holton
Featuring the Lizzie Collection by Anna Griffin
Size: 66" x 93"

Fabric Requirements and Cutting Directions:

WOF = Width of Fabric

31731-2	Blue w/wht daisies	1 1/8yd	(2) 6 1/2" x 14" (A), (2) 6 1/2" x 12 1/2" (B)
31728-2	Blue w/green flowers	3/4yd	(1) 6 1/2" x 12 1/2" (B) (2) 6 1/2" x 27 1/2" (D)
31731-3	Green w/wht daisies	5/8yd	(2) 6 1/2" x 14" (A), (1) 6 1/2" x 12 1/2" (B), (1) 6 1/2" x 27 1/2" (D)
31728-1	Pink w/green flowers	7/8yd	(2) 6 1/2" x 14" (A), (1) 6 1/2" x 27 1/2" (D)
31733-1	Pink w/green petals	1/2yd	(2) 3 1/2" x 6 1/2" (C)
31733-2	Blue w/green petals	1/8yd	(1) 3 1/2" x 6 1/2" (C)
31729-4	Yellow tonal	2 5/8yd	(1) 6 1/2" x 14" (A), (1) 6 1/2" x 27 1/2" (D), (8) 5" x WOF (8) 2 1/4" x WOF (for binding)
31729-2	Blue tonal	7/8yd	(2) 6 1/2" x 14" (A), (2) 3 1/2" x 6 1/2" (C), (1) 6 1/2" x 27 1/2" (D)
31735-X	Multi zig-zag*	2yds	(3) 15 1/2" x 21 1/2" (E), (3) 21 1/2" x 15 1/2" (E)
<i>*note that the zig-zags go horizontal on 3 E's and vertical on 3 E's.</i>			
31731-1	Pink daisies	5/8yd	(1) 6 1/2" x 14" (A), (2) 6 1/2" x 12 1/2" (B)
31733-3	Green w/blue petals	3/4yd	(1) 6 1/2" x 14" (A)
31729-3	Green tonal	1/2yd	(1) 6 1/2" x 14" (A), (1) 3 1/2" x 6 1/2" (C) (7) 2" x WOF strips
1930's	White solid	1yd	(6) 10" x 12"



31731-2



31728-2



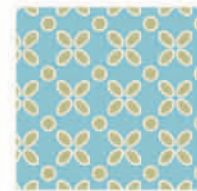
31731-3



31728-1



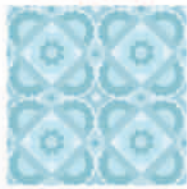
31733-1



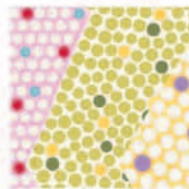
31733-2



31729-4



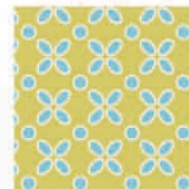
31729-2



31735-X



31731-1



31733-3



31729-3



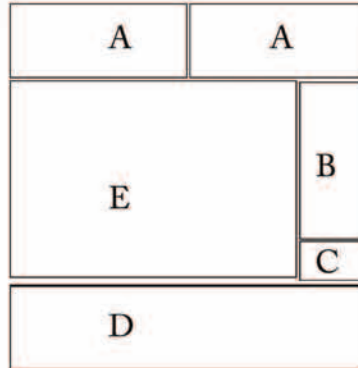
“Lizzie Hearts”

Page 2

Finished blocks are: 27" x 27"

**There are six blocks all constructed the in the same manner. The difference is the color combinations. We suggest you place all you similar pieces together – ie all the A pieces, the B pieces.... Then follow the picture for color combinations.*

Sew two A pieces together end to end. Press. Sew one B piece to one C piece. Press. Sew the B/C set to the side E, press toward E. Sew the A/B set to the E/B/C set. Sew the D strip to the other side of the E/B/C set.



Refer to quilt picture for fabric placement and repeat to make the six blocks. Lay out blocks according to the picture. Sew two blocks together to make a row. Make three rows. Apply appliqués.

Applique Hearts:

You will need:

Six white large hearts

6 medium hearts- pink daisy, blue daisy, yellow tonal, blue tonal and green daisy

6 small hearts- pink w/green flower, (2) yellow tonal, blue daisy, pink w/green petals, pink daisy
(see Templates on Page 4)

Trace the heart shape on the back of fusible web. Following manufactures directions, press web to the wrong side of the fabric square, cut your heart out and place on the corresponding square. (refer to picture). Press large white square in place, then repeat the process with the medium heart and the small heart sizes, layering the hearts on top of the white heart base as you go. After the hearts are applied stitch around the hearts to secure in place. Use a blanket stitch or zig-zag stitch.

Sew three rows together to form quilt top.

Inside border: Sew (2) 2" x WOF together end to end and sew to right side of quilt top. Sew (2) 2" x WOF together end to end and sew to left side of quilt top. Trim ends even with top and bottom. Press seams toward border. Sew (2) 2" x WOF together end to end and sew to top of quilt top. Trim excess even with quilt side. Sew excess strip to remaining 2" x WOF strip and sew to the bottom of the quilt. Trim even with quilt sides and press seams toward border.

Outside border: Sew (2) 5" x WOF together end to end and sew to right side of quilt top. Sew (2) 5" x WOF together end to end and sew to left side of quilt top. Trim ends even with top and bottom. Press seams toward border. Sew (2) 5" x WOF together end to end and sew to top of quilt top. Trim excess even with quilt side. Sew excess strip to remaining 5" x WOF strip and sew to the bottom of the quilt. Trim even with quilt sides and press seams toward border.

Sandwich your quilt top, batting and backing and quilt as desired.

Sew your 4 binding strips of yellow tonal together and press raw edges together. Sew binding to right side of quilt using a 1/4" seam allowance and having raw edges together. Press binding out, fold over seam allowance and hand stitch to finish the quilt top. ENJOY!

Be sure to visit www.windhamfabrics.com to see the complete collection
and to download this and other Free Projects



“Lizzie Hearts”

Page 3

HEART TEMPLATES

3 sizes - 1/2 template

fold line

