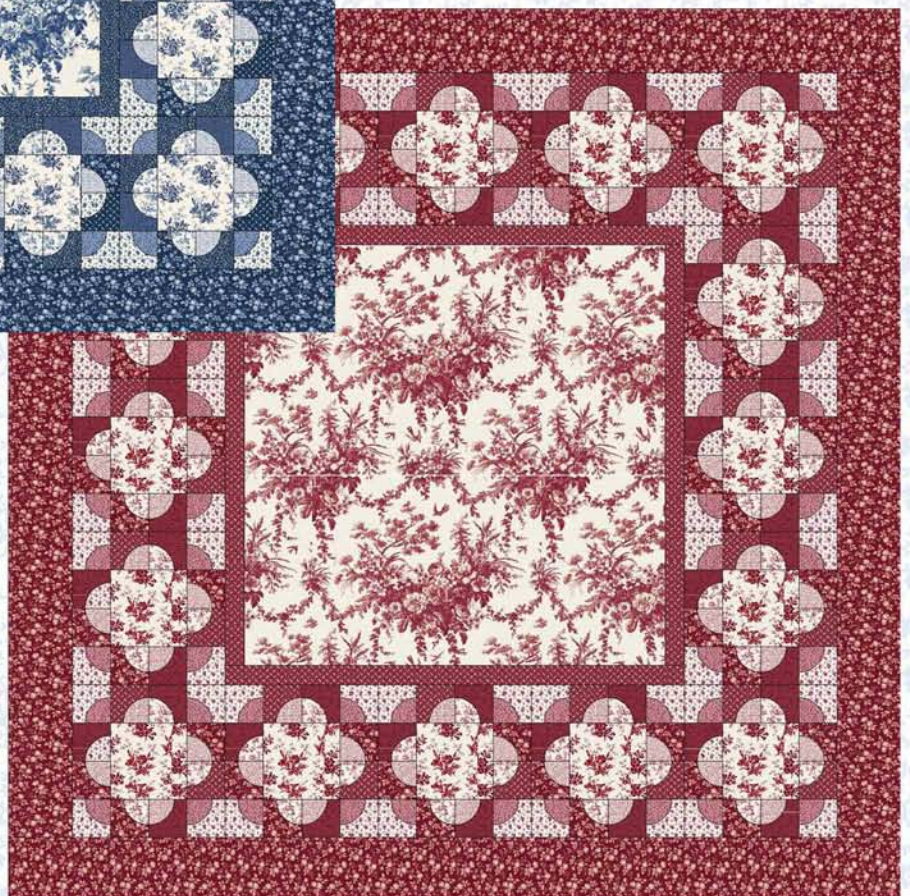
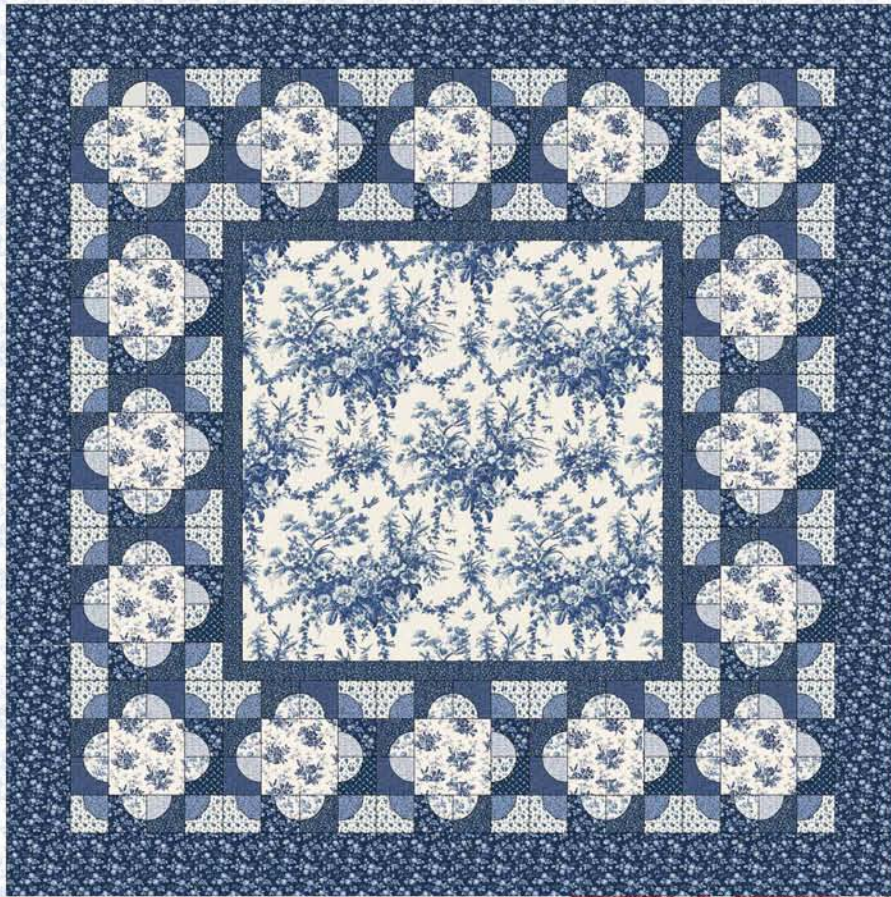


# “THE QUEEN’S CHINA”

Designed by Bethany Fuller of Grace’s Dowry Quilts  
Featuring The Wedgewood Collection by Whistler Studios  
Size: 70” x 70”

REVISED



Feel free to download additional copies of this and other projects by visiting  
our website: [www.windhamfabrics.com](http://www.windhamfabrics.com)

WINDHAM FABRICS

812 Jersey Ave ~ Jersey City, NJ 07310 ~ 201.659.0444 ~ FAX: 201.659.9719  
[www.windhamfabrics.com](http://www.windhamfabrics.com) email: [retail@windhamfabrics.com](mailto:retail@windhamfabrics.com)



# “THE QUEEN’S CHINA”

Designed by Bethany Fuller of Grace’s Dowry Quilts  
 Featuring The Wedgwood Collection by Whistler Studios

Size: 70” x 70”

## Fabric Requirements

### Blue Quilt

1 yd large focus for center - 32142-1  
 5/8 yd small focus for block centers - 32143-1  
 1 3/4 yds Outer Border & Blocks - 32144-3  
 1 yd Inner Border & Binding - 32146-3  
 5/8 yd Primary Light - 32147-1  
 1/2 Light Blue - 32146-6

3/8 yd EACH of 3 Darks  
 32146-6, 32148-3, 32145-3

1/4 yd EACH of 3 lights  
 32144-1, 32145-1, 32147-1

4 1/2 yds Backing  
 No Melt Mylar Template Plastic

### Red Quilt

1 yd large focus for center - 32142-2  
 5/8 yd small focus for block centers - 32143-2  
 1 3/4 yds Outer Border & Blocks - 32144-4  
 1 yd Inner Border & Binding - 32145-4  
 5/8 yd Primary Light - 32147-2  
 1/2 yd Light Red - 32146-7

3/8 yd EACH of 3 Darks  
 32146-7, 32148-4, 32145-4

1/4 yd EACH of 3 lights  
 32144-2, 32145-2, 32147-2

4 1/2 yds Backing  
 No Melt Mylar Template Plastic



32142-1



32143-1



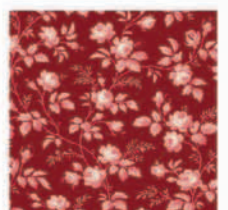
32144-3



32142-2



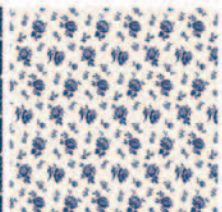
32143-2



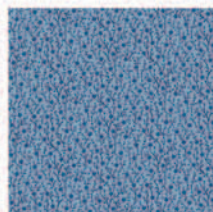
32144-4



32146-3



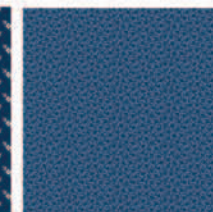
32147-1



32146-6



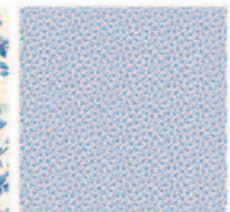
32148-3



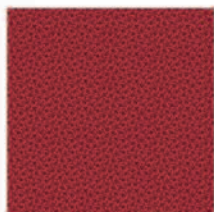
32145-3



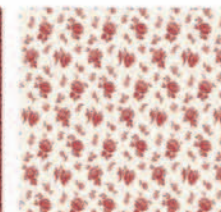
32144-1



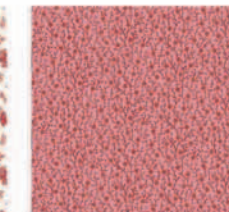
32145-1



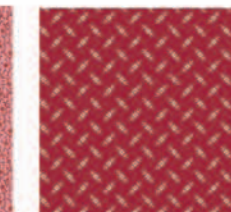
32145-4



32147-2



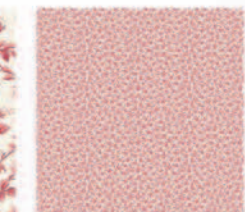
32146-7



32148-4



32144-2



32145-2



# “THE QUEEN’S CHINA”

Page 2

## Quilt Construction

From center fabric, cut 1 – 33 1/2” square. Save remaining fabric for blocks.

From Inner Border fabric, cut 4 – 2” strips.

Cut 2 of these strips to 33 1/2”.

Cut the other 2 strips to 36 1/2”.

Save remaining fabric for binding.

From Outer Border fabric, cut 8 – 5 1/2” strips. Piece together for Outer Border and set aside.  
Use remaining fabric for darks for blocks. Cut 20 - 3 1/2” squares.

From block center fabric, cut 3 – 6 1/2” strips; from these strips cut 16 – 6 1/2” squares.

From the primary light fabric, cut 6 – 3 1/2” strips; from these strips, cut 64 - 3 1/2” squares.

From EACH of the 3 darks, cut 4 – 3 1/2” strips; from these strips cut 36 – 3 1/2” squares per fabric.

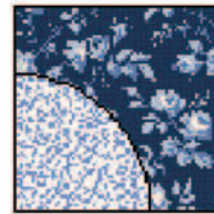
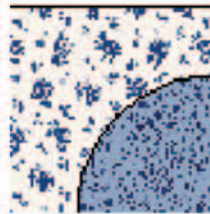
Trace and cut several quarter circle templates on from the template plastic.

From light blue/red, cut 64 – 3” squares.

From assorted lights, cut 128 – 3” squares.

Lay template on square and trace along curved side. Trim 1/4” away from curved side to make edge for applique.

Use plastic template. Place on wrong side  
and iron edge over using starch  
to prepare applique.



Align corner of applique piece to corner of 3 1/2” squares. Pin and stitch, either by hand or with invisible thread by machine.

Place light blue/pink on the primary light fabric squares.

Place assorted light prints on the assorted dark squares.

Piece 16 blocks, arranging light and dark fabrics so that 2 of the same are not next to each other. Blocks should measure 12 1/2” unfinished. *See diagram on next page*

Sew into 2 rows of 3 blocks each and 2 rows of 5 blocks each.



WINDHAM FABRICS

# “THE QUEEN’S CHINA”

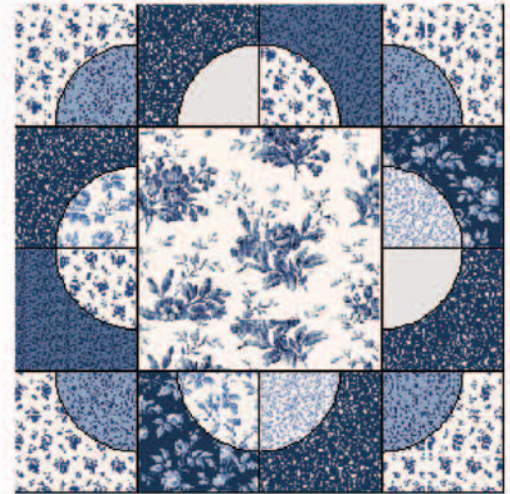
Page 3

Sew Inner Border to quilt center. Press away from the center.  
Add pieced block rows. Press toward the Inner Border.

Your quilt top should now measure approximately 60 1/2” square.  
Measure your quilt well before you add the borders and cut accordingly. Add side borders first, then top and bottom.

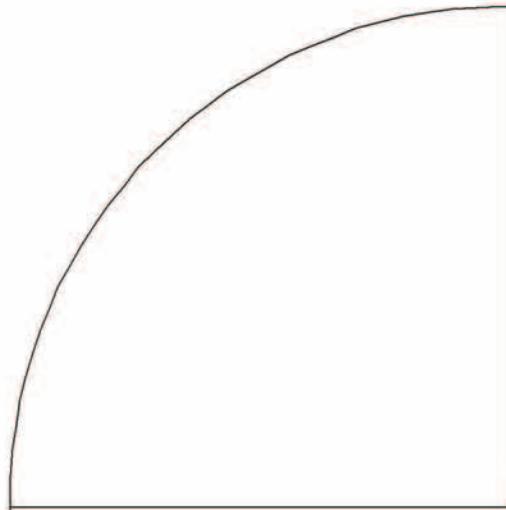
Quilt & bind! ENJOY!

Learn More about Bethany Fuller at: [www.gracesdowryquilts.com](http://www.gracesdowryquilts.com)



## TEMPLATE

Straight edge of template should measure 2 1/2” when printed correctly.



Be sure to visit [www.windhamfabrics.com](http://www.windhamfabrics.com) to see the complete collection  
and to download this and other Free Projects



WINDHAM FABRICS