

“Tropical Travel”

Designed by Debby Kratovil
Featuring the Hemingway Collection by Whistler Studios
Size: 46” x 46”



WINDHAM FABRICS

812 Jersey Ave ~ Jersey City, NJ 07310 ~ 201.659.0444 ~ FAX: 201.659.9719
www.windhamfabrics.com email: retail@windhamfabrics.com

“Tropical Travel”



Designed by Debby Kratovil
Featuring the Hemingway Collection by Whistler Studios
Block Size: 8”
Quilt Size: 46” x 46”



Fabrics:

1/2 yard of 32024-2 Red
1/3 yard 32022-1 Blue
1/4 yard 32024-1 Blue
1/3 yard 32026-1 Blue
1/4 yard 32023-3 Cream
1/4 yard 32025-3 Cream
1/2 yard 32025-4 Brown
1/4 yard 32025-5 Green
Fat quarter 32021-X Multi
1 yard 32023-4 Brown
2 yards backing
52” square of batting



32021-X



32023-3



32023-4



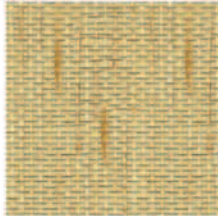
32022-1



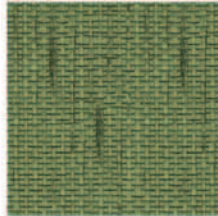
32024-1



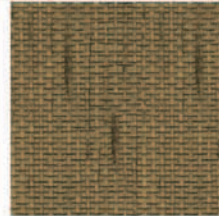
32024-2



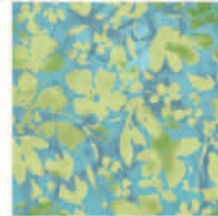
32025-3



32025-5



32025-4



32026-1

Cutting:

From the 32024-2 Red, cut:

16 squares 4-1/2” x 4-1/2” (for the square in square blocks)

24 squares 2-7/8” x 2-7/8”; Re-cut each into two triangles (for the alternate triangles block)

From the 1/3 yard 32022-1 Blue, cut:

4 squares 8-1/2” x 8-1/2” (for center of square in square blocks)

From the 32024-1 Blue, cut:

24 squares 2-7/8” x 2-7/8”; Re-cut each into two triangles (for the alternate triangles block)

From the 32026-1 Blue, cut:

32 squares 2-7/8” x 2-7/8”; Re-cut each into two triangles (for the alternate triangles block)



“Tropical Travel”



Page 2

Cutting:

From the 32023-3 Cream, cut:

4 squares 4-7/8” x 4-7/8”; Re-cut each into two triangles (for the alternate triangles block)

From the 32025-3 Cream, cut:

4 squares 4-7/8” x 4-7/8”; Re-cut each into two triangles (for the alternate triangles block)

From the 32025-4 Brown, cut:

2 strips 1-1/2” x wof (for inner sashing around center block)

5 strips 2-1/4” x wof (for binding)

From the 32025-5 Green, cut:

4 strips 1-1/2” x wof (inner borders)

From the 32021-X Multi, cut:

1 square 14-1/2” x 14-1/2” (center block)

From the 32023-4 Brown, cut:

4 strips 6-1/2” x wof (will be trimmed to fit later for sides, top and bottom borders)

Making the Square in a Square Blocks:

1. Draw a diagonal line on the wrong side of each of the 16 red 4-1/2” squares. Place one right sides together with one of the blue floral 8-1/2” squares (see Diagram 1). Sew along the drawn line and trim away the excess fabrics, leaving a 1/4” seam. Repeat for opposing side (see Diagram 2).
2. Press the triangles out (see Diagram 3). Repeat for each of the four corners (Diagram 4), creating a Square in a Square block (Diagram 5). Repeat making a total of 4 blocks, measuring 8-1/2” x 8-1/2” (unfinished).

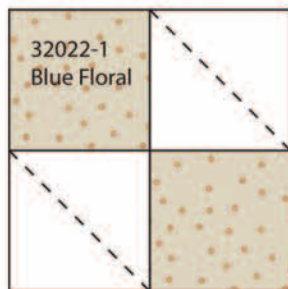


Diagram 1

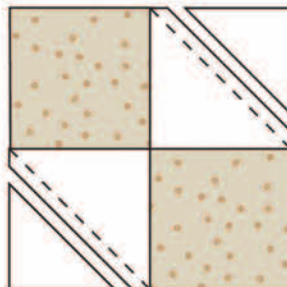


Diagram 2

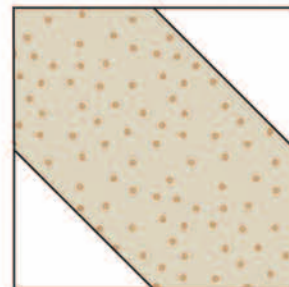


Diagram 3

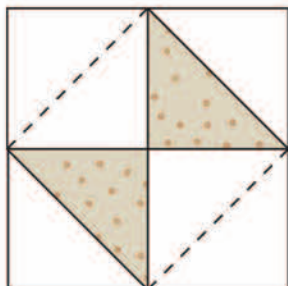


Diagram 4

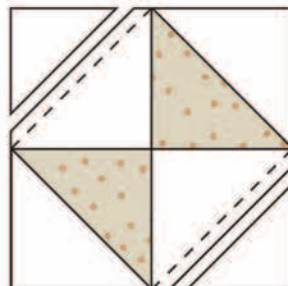


Diagram 5 - Square in Square Block



"Tropical Travel"



Page 3

Making the Alternate Triangles Blocks:

1. Refer to the color photo of the quilt for fabric placement. Make the following half-square triangle units for EACH of the blocks using the triangles cut from the $2\frac{7}{8}$ " squares: 6 pairs using the medium blue (32024-1) and the blue and green print (32026-1); 4 pairs using the red (32024-2) and the blue and green print (32026-1).

Use two of the blue and green print (32026-1) and two of the red (32024-2) triangles, along with one larger triangle from the 32023-3 Cream and one larger triangle from 32025-3 Cream. See Diagram 6. Make a total of 8 of these Alternate Triangle Blocks, measuring $8\frac{1}{2}$ " x $8\frac{1}{2}$ ".

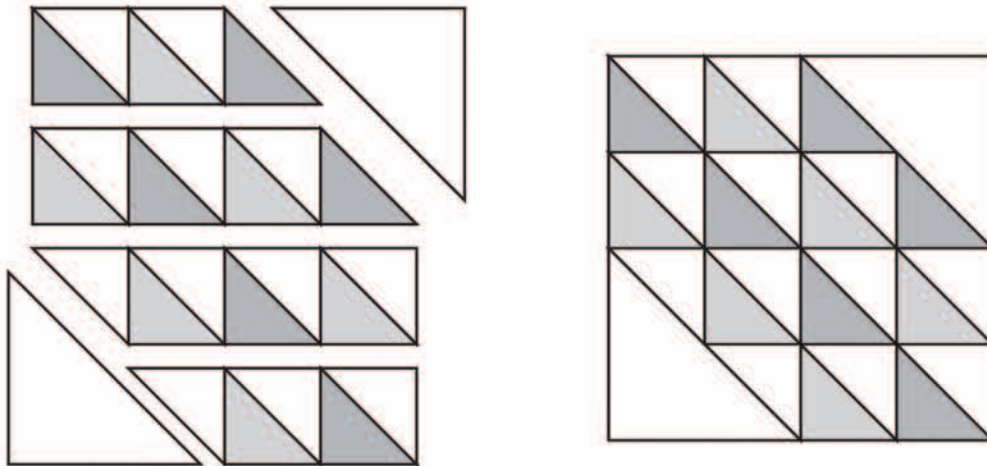
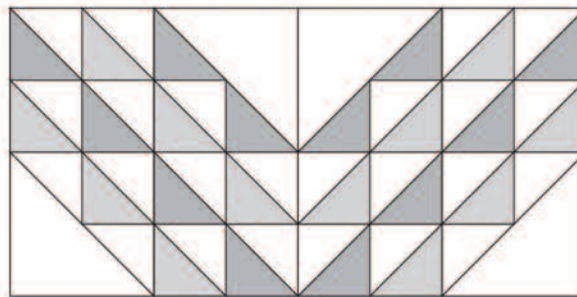


Diagram 6



Make 4

Putting the quilt center together:

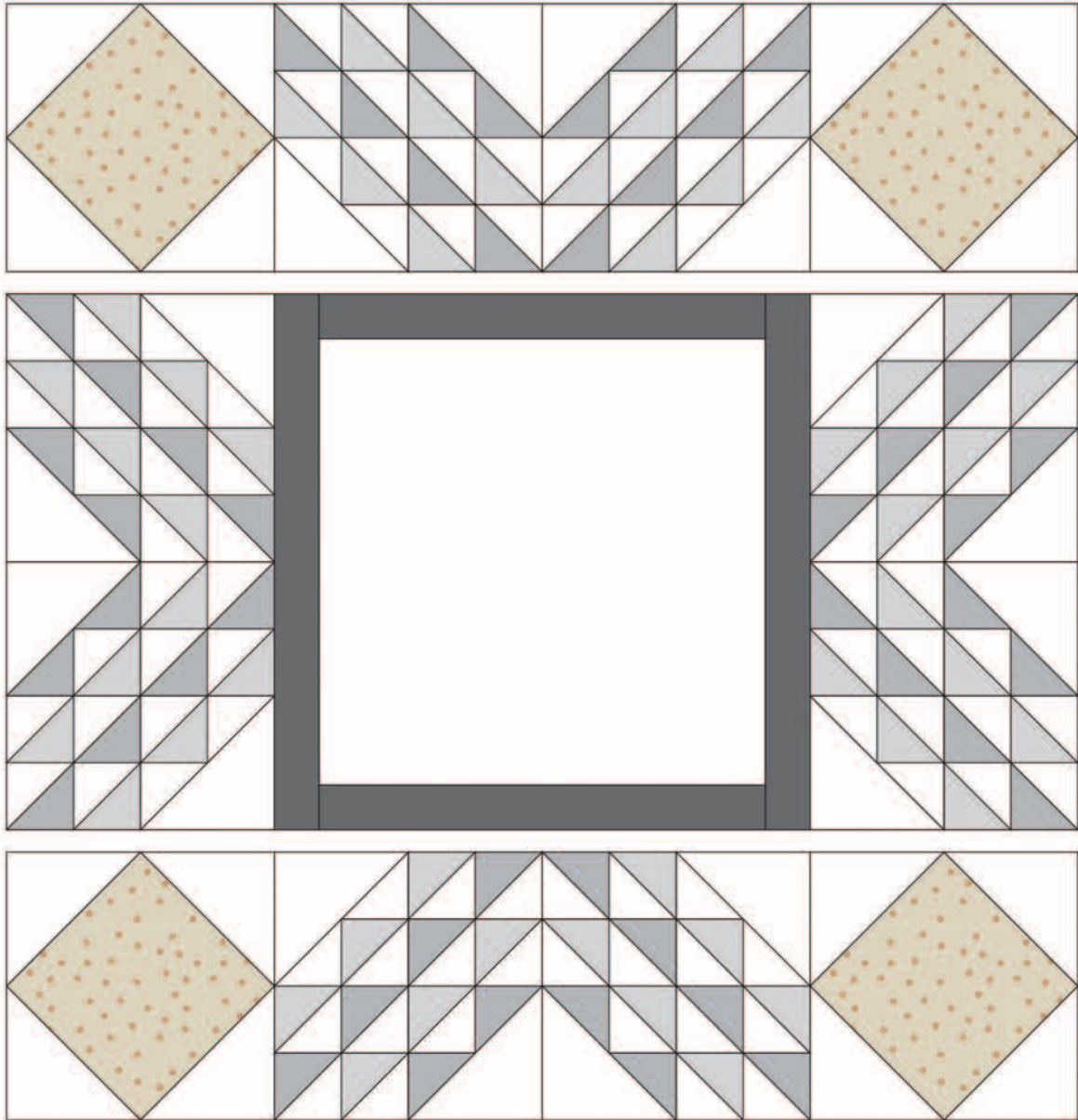
1. From the 32025-4 Brown strips, cut two $1\frac{1}{2}$ " x $14\frac{1}{2}$ " and sew to opposite sides of the $14\frac{1}{2}$ " of the 32021-X Multi print. Trim the remaining two $1\frac{1}{2}$ " strips to $16\frac{1}{2}$ " and sew to top and bottom of the square.
2. Sew two Alternate Triangles Blocks together, referring to the color photo for fabric placement. Repeat for remaining 3 sets of blocks.
3. Join the center square/sashing unit with two of these two-block units as shown in the Assembly Diagram (on next page). Press seams toward the brown sashing.



"Tropical Travel"



Page 4



Quilt Center Assembly Diagram

4. Sew a Square in a Square block to each short side of the remaining Alternate Triangles Blocks units. Join these to the unit created in Step 3 above. Quilt center now measures $32\frac{1}{2}'' \times 32\frac{1}{2}''$.



"Tropical Travel"



Page 5

Adding the Borders:

1. Trim two of the green 1-1/2" strips to 32-1/2" and sew to quilt top and bottom. Press seams toward the border. Trim the remaining two strips to 34-1/2" and sew to quilt sides. Press.
2. Trim two of the outer border strips to 34-1/2" and sew to quilt sides. Use the remainder of these strips and join to the last two 6-1/2" border strips, piecing them to equal 46-1/2". Sew these to the quilt top and bottom.

Finishing:

1. Piece backing to measure at least 2" larger around all sides of the quilt top. Layer the quilt top, batting and backing. Baste and quilt as desired.
2. Seam together the binding strips and bind the quilt.

To learn more about Debby Kratovil
or you have a question about this pattern,
please contact her at:

www.quilterbydesign.com



Be sure to visit www.windhamfabrics.com to see the complete collection
and to download this and other Free Projects

WINDHAM FABRICS