

# Full Heart

designed by Tamara Kate

featuring *Bedrock* by Sophia Santander of Whistler Studios

SIZE: 46" x 46"

FREE  
PROJECT



QUILT DESIGN AND INSTRUCTIONS COPYRIGHT OF TAMARA KATE DESIGNS. ALL RIGHTS RESERVED.

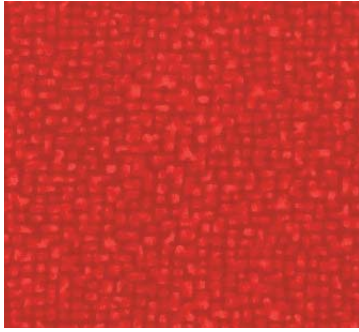
VISIT [KAYAJOYDESIGNS.COM](http://KAYAJOYDESIGNS.COM) FOR MORE INFORMATION.

**PLEASE NOTE:** BEFORE MAKING YOUR PROJECT, CHECK FOR ANY PATTERN UPDATES AT [WINDHAMFABRICS.COM](http://WINDHAMFABRICS.COM)'S FREE PROJECTS SECTION.

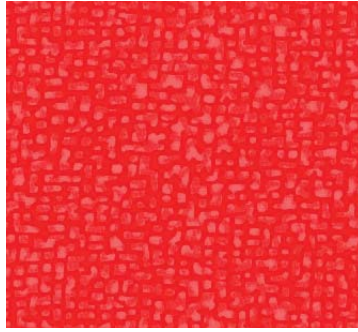


# Full Heart Quilt

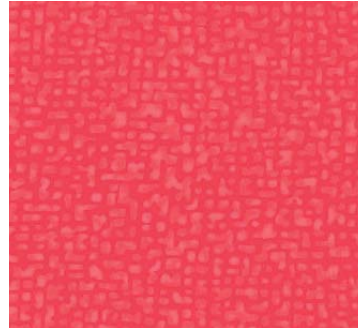
## Fabric Requirements



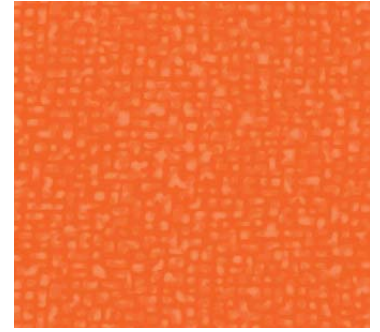
50087-5 True Red  
BEDROCK  
Fat Eighth



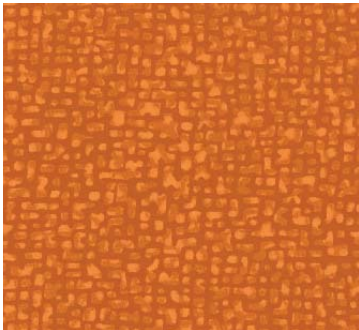
50087-56 Candy  
BEDROCK  
Fat Eighth



50087-57 Radiant Rose  
BEDROCK  
Fat Eighth



50087-20 Pumpkin  
BEDROCK  
Fat Eighth



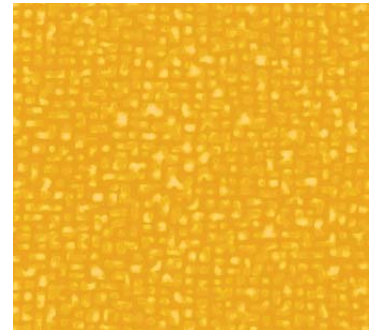
50087-19 October  
BEDROCK  
Fat Eighth



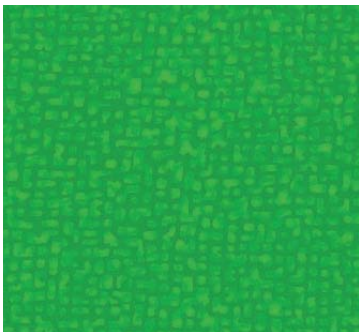
50087-4 Pure Gold  
BEDROCK  
Fat Eighth



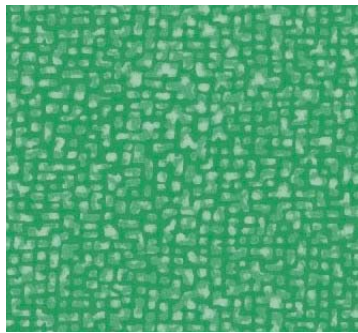
50087-16 Khaki  
BEDROCK  
Fat Eighth



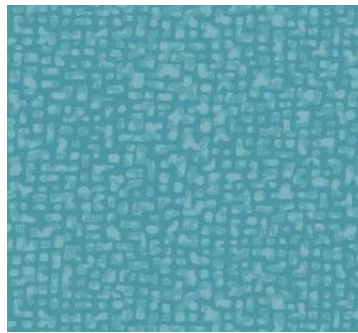
50087-22 Honeycomb  
BEDROCK  
Fat Eighth



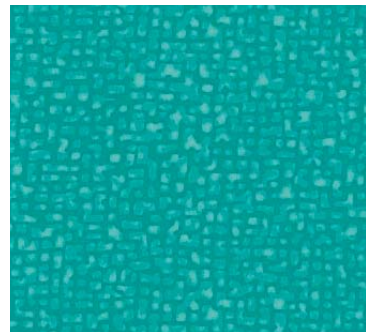
50087-62 Cut Grass  
BEDROCK  
Fat Eighth



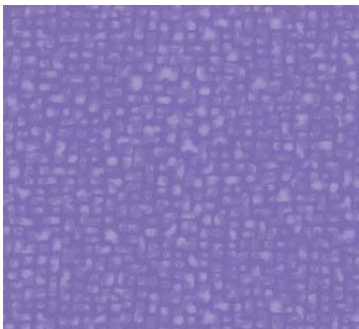
50087-63 Jade  
BEDROCK  
Fat Eighth



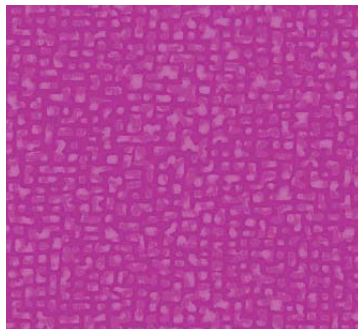
50087-69 Dolphin  
BEDROCK  
Fat Eighth



50087-1 Turquoise  
BEDROCK  
Fat Eighth



50087-50 Amethyst  
BEDROCK  
Fat Eighth



50087-58 Orchid  
BEDROCK  
Fat Eighth



31835S White  
1¼ Yards +  
**BINDING:** 1/2 yard



**BACKING:** 42466-6 1½ Yards  
**NB: This fabric is 108" wide.**  
**If using 44" fabric, piece to-**  
**gether to measure: 50" x 50"**

# Full Heart Quilt

## Also Needed:

- 50" X 50" quilt batting.
- A rotary cutter, a long acrylic ruler, cutting mat, thread.

## Cutting Instructions:

- **BINDING FABRIC** - Cut 5 strips 2¼" X WOF (width of fabric). Set Aside.
- **31835S** - Cut 16 strips (2½" x WOF). Cut these strips into 270 (2½" squares).
- **All Bedrock Fabrics** - For each fabric, cut 3 strips (2½" x 22"). Cut these strips into 24 (2½" squares). You will have a few squares left over at the end.

## Quilt Layout:

Refer to Diagram 1 for heart layout and to quilt photo for fabric placement.

- **Tips for arranging color:** Colors are arranged in rainbow order (reds, pink, oranges, beiges, yellow, greens, blues, purples). Start at the top left, move gradually to the top right, then down to the bottom. As pink transitions well to purple, use this colour as the main transition from the top left to the bottom. Try to keep a smooth transition of color when arranging squares. A few unexpected pops of color make things more dynamic.

## Piecing the Quilt Top:

All seam allowances are ¼".

Once you are happy with the arrangement, start piecing the squares together one row at a time. Be sure to keep your squares in the right order. Press seams open.

Once your rows are all sewn, piece these together, in order, aligning seams to finish your quilt top. Press seams open.

## Assembling Quilt:

Layer backing, batting and quilt top. Baste or pin.

Quilt as desired.

Square up quilt.

Join binding strips together and bind in your preferred fashion.

**PROJECT DISCLAIMER:** Every effort has been made to ensure that all projects are error free. All the information is presented in good faith, however, no warranty can be given nor results guaranteed. Therefore, we assume no responsibility nor damages that may occur when referring to this pattern. When errors are brought to our attention, we make every effort to correct and post a revision as soon as possible. We suggest you check [windhamfabrics.com](http://windhamfabrics.com) for pattern updates and to test the pattern prior to making the project. Test templates first, before cutting all the pieces. Free projects are not for resale.

# Full Heart Quilt

Diagram 1

