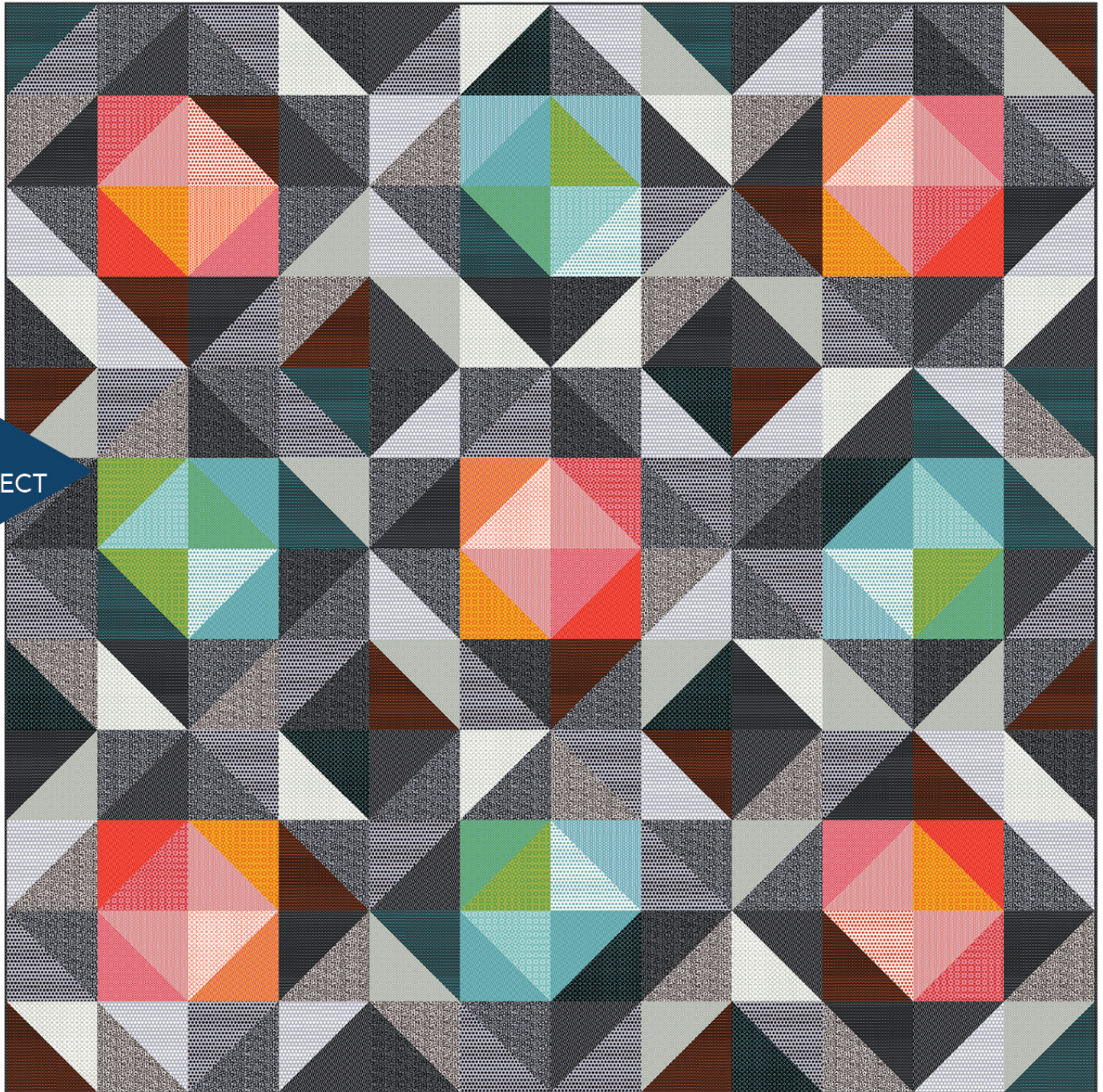


# Here and There Squares

Designed by Bonnie Vangool, Interpreted by Heidi Pridemore of The Whimsical Workshop  
Featuring Uppercase by Janine Vangool

SIZE: 96" x 96"



FREE  
PROJECT

THIS IS A DIGITAL REPRESENTATION OF THE QUILT TOP, FABRIC MAY VARY.

**PLEASE NOTE:** BEFORE MAKING YOUR PROJECT, CHECK FOR ANY PATTERN UPDATES AT [WINDHAMFABRICS.COM](http://WINDHAMFABRICS.COM)'S FREE PROJECTS SECTION.





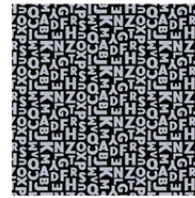
# Here and There Squares

## Estimated Fabric Requirements:

- 7/8 yard – 41827-5 Black
- 1 5/8 yards – 41827-3 Grey
- 1 1/8 yards – 41827-8 White
- 7/8 yard – 41825-3 Grey
- 7/8 yard – 41826-3 Grey
- 1 1/2 yards – 41820-3 Grey
- 7/8 yard – 41822-3 Grey
- 7/8 yard – 41823-3 Grey
- 7/8 yard – 41820-2 Orange
- 1/3 yard – 41823-2 Orange
- 1/3 yard – 41822-2 Orange
- 1/3 yard – 41824-2 Orange
- 1/3 yard – 41821-2 Orange
- 1/3 yard – 41825-2 Orange
- 1/3 yard – 41825-4 Pink
- 1/3 yard – 41824-4 Pink
- 5/8 yard – 41821-4 Pink
- 1/3 yard – 41826-4 Pink
- 5/8 yard – 41822-1 Turquoise
- 5/8 yard – 41820-1 Turquoise
- 5/8 yard – 41825-1 Turquoise
- 1/3 yard – 41824-1 Turquoise
- 1/3 yard – 41823-1 Turquoise
- 1/3 yard – 41821-1 Turquoise
- 5/8 yard – 41824-7 Lime
- 1/3 yard – 41826-1 Turquoise
- 1 1/8 yards – 41823-5 Black
- 8 3/4 yards – 41827M-6 Metallic Silver



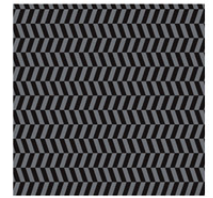
41827-5 Black



41827-3 Grey



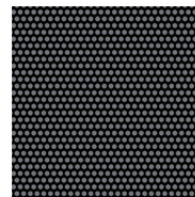
41827-8 White



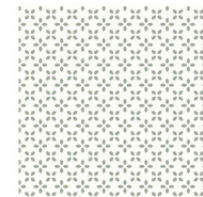
41825-3 Grey



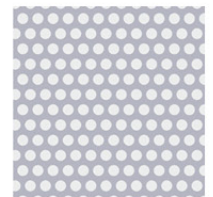
41826-3 Grey



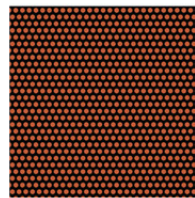
41820-3 Grey



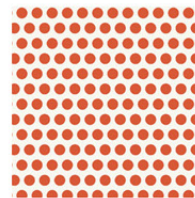
41822-3 Grey



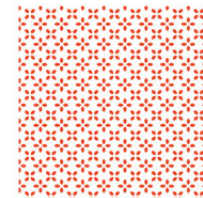
41823-3 Grey



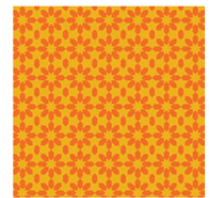
41820-2 Orange



41823-2 Orange



41822-2 Orange



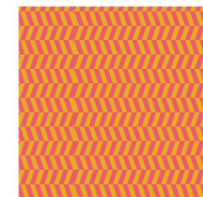
41824-2 Orange



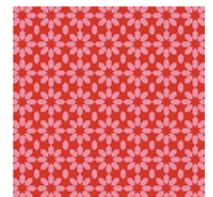
41821-2 Orange



41825-2 Orange



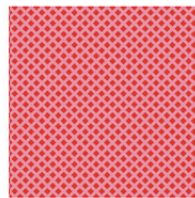
41825-4 Pink



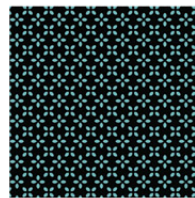
41824-4 Pink



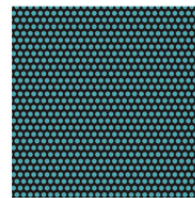
41821-4 Pink



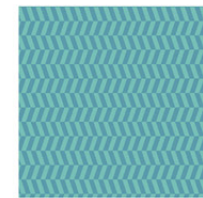
41826-4 Pink



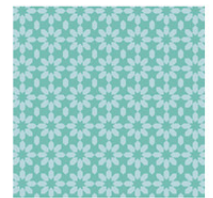
41822-1 Turquoise



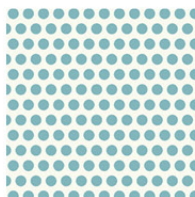
41820-1 Turquoise



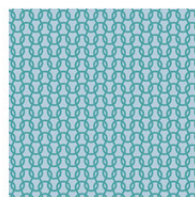
41825-1 Turquoise



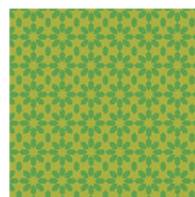
41824-1 Turquoise



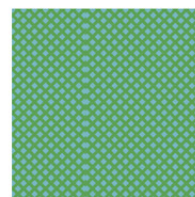
41823-1 Turquoise



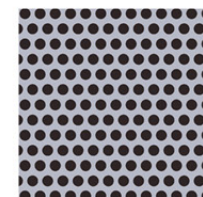
41821-1 Turquoise



41824-7 Lime



41826-1 Turquoise



41823-5 Black



41827M-6 Metallic Silver



# Here and There Squares

## Cutting Instructions: (WOF=width of fabric, LOF=length of fabric)

Fabric 1: Letters – Black

- Cut three  $8\frac{7}{8}$ " x WOF strips. Sub-cut the strips into nine  $8\frac{7}{8}$ " squares.

Fabric 2: Letters – Grey

- Cut six  $8\frac{7}{8}$ " x WOF strips. Sub-cut the strips into twenty-two  $8\frac{7}{8}$ " squares.

Fabric 3: Letters – White

- Cut four  $8\frac{7}{8}$ " x WOF strips. Sub-cut the strips into thirteen  $8\frac{7}{8}$ " squares.

Fabric 4: Herringbone - Grey

- Cut three  $8\frac{7}{8}$ " x WOF strips. Sub-cut the strips into ten  $8\frac{7}{8}$ " squares.

Fabric 5: Crosshatch – Grey

- Cut three  $8\frac{7}{8}$ " x WOF strips. Sub-cut the strips into twelve  $8\frac{7}{8}$ " squares.

Fabric 6: Small Dot - Grey

- Cut three  $8\frac{7}{8}$ " x WOF strips. Sub-cut the strips into nine  $8\frac{7}{8}$ " squares.
- Cut ten  $2\frac{1}{2}$ " x WOF strips for the binding.

Fabric 7: Clover - Grey

- Cut three  $8\frac{7}{8}$ " x WOF strips. Sub-cut the strips into nine  $8\frac{7}{8}$ " squares.

Fabric 8: Large Dots - Grey

- Cut three  $8\frac{7}{8}$ " x WOF strips. Sub-cut the strips into twelve  $8\frac{7}{8}$ " squares.

Fabric 9: Small Dots - Orange

- Cut three  $8\frac{7}{8}$ " x WOF strips. Sub-cut the strips into nine  $8\frac{7}{8}$ " squares.

Fabric 10: Large Dots - Orange

- Cut one  $8\frac{7}{8}$ " x WOF strip. Sub-cut the strip into one  $8\frac{7}{8}$ " square.

Fabric 11: Clover - Orange

- Cut one  $8\frac{7}{8}$ " x WOF strip. Sub-cut the strip into two  $8\frac{7}{8}$ " squares.

Fabric 12: Flowers - Orange

- Cut one  $8\frac{7}{8}$ " x WOF strip. Sub-cut the strip into three  $8\frac{7}{8}$ " squares.

Fabric 13: Loops - Orange

- Cut one  $8\frac{7}{8}$ " x WOF strip. Sub-cut the strip into one  $8\frac{7}{8}$ " square.

Fabric 14: Herringbone - Orange

- Cut one  $8\frac{7}{8}$ " x WOF strip. Sub-cut the strip into three  $8\frac{7}{8}$ " squares.





# Here and There Squares

## Cutting Instructions - Continued:

Fabric 15: Herringbone – Pink

- Cut one 8  $\frac{7}{8}$ " x WOF strip. Sub-cut the strip into two 8  $\frac{7}{8}$ " squares.

Fabric 16: Flowers – Pink

- Cut one 8  $\frac{7}{8}$ " x WOF strip. Sub-cut the strip into three 8  $\frac{7}{8}$ " squares.

Fabric 17: Loops – Pink

- Cut two 8  $\frac{7}{8}$ " x WOF strips. Sub-cut the strips into six 8  $\frac{7}{8}$ " squares.

Fabric 18: Crosshatch – Pink

- Cut one 8  $\frac{7}{8}$ " x WOF strip. Sub-cut the strip into four 8  $\frac{7}{8}$ " squares.

Fabric 19: Clover - Turquoise

- Cut two 8  $\frac{7}{8}$ " x WOF strips. Sub-cut the strips into six 8  $\frac{7}{8}$ " squares.

Fabric 20: Small Dots - Turquoise

- Cut two 8  $\frac{7}{8}$ " x WOF strips. Sub-cut the strips into eight 8  $\frac{7}{8}$ " squares.

Fabric 21: Herringbone - Turquoise

- Cut two 8  $\frac{7}{8}$ " x WOF strips. Sub-cut the strips into five 8  $\frac{7}{8}$ " squares.

Fabric 22: Flowers - Turquoise

- Cut one 8  $\frac{7}{8}$ " x WOF strip. Sub-cut the strip into three 8  $\frac{7}{8}$ " squares.

Fabric 23: Large Dots - Turquoise

- Cut one 8  $\frac{7}{8}$ " x WOF strip. Sub-cut the strip into three 8  $\frac{7}{8}$ " squares.

Fabric 24: Loops - Turquoise

- Cut one 8  $\frac{7}{8}$ " x WOF strip. Sub-cut the strip into three 8  $\frac{7}{8}$ " squares.

Fabric 25: Flowers – Lime

- Cut one 8  $\frac{7}{8}$ " x WOF strip. Sub-cut the strip into four 8  $\frac{7}{8}$ " squares.

Fabric 26: Crosshatch - Turquoise

- Cut one 8  $\frac{7}{8}$ " x WOF strip. Sub-cut the strip into three 8  $\frac{7}{8}$ " squares.

Fabric 27: Large Dots - Black

- Cut four 8  $\frac{7}{8}$ " x WOF strips. Sub-cut the strips into fifteen 8  $\frac{7}{8}$ " squares.

Backing: Letters – Metallic Silver

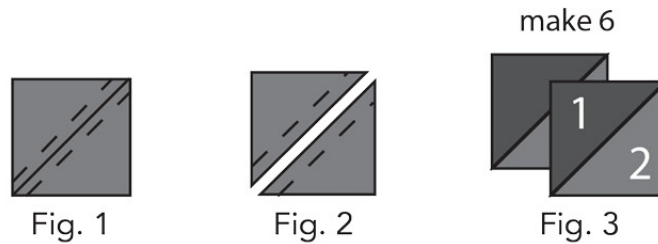
- Cut three 104" x WOF strips. Sew the strips together and trim to 104" x 104" for the back.



# Here and There Squares

## Block Assembly:

1. Place one  $8\frac{7}{8}$ " Fabric 2 square on top of one  $8\frac{7}{8}$ " Fabric 1 square, right sides together. Draw a line across the diagonal of the top square (Fig. 1). Sew  $\frac{1}{4}$ " away from each side of the drawn diagonal line (Fig. 1). Cut the two squares apart on the drawn diagonal line (Fig. 2) to make two 1-2 units (Fig. 3). Trim the units to measure  $8\frac{1}{2}$ " square. Repeat to make six 1-2 units total.



2. Repeat Step 1 and use Figure 4 (on page 6) for fabric identification to make the designated  $8\frac{1}{2}$ " half-square units from the remaining  $8\frac{7}{8}$ " squares. There will be a total of (144)  $8\frac{1}{2}$ " half square units.

## Quilt Assembly – Refer to the Quilt Layout while assembling the quilt top:

3. Sew twelve assorted  $8\frac{1}{2}$ " half square units together to make one row. Repeat to make twelve rows.
4. Sew the twelve rows together to make the quilt top.
5. Layer and quilt as desired.
6. Sew the ten  $2\frac{1}{2}$ " x WOF Fabric 6 strips together, end to end with 45-degree seams, to make the binding. Fold this long strip in half, lengthwise with wrong sides together, and press.
7. Bind as desired.



# Here and There Squares

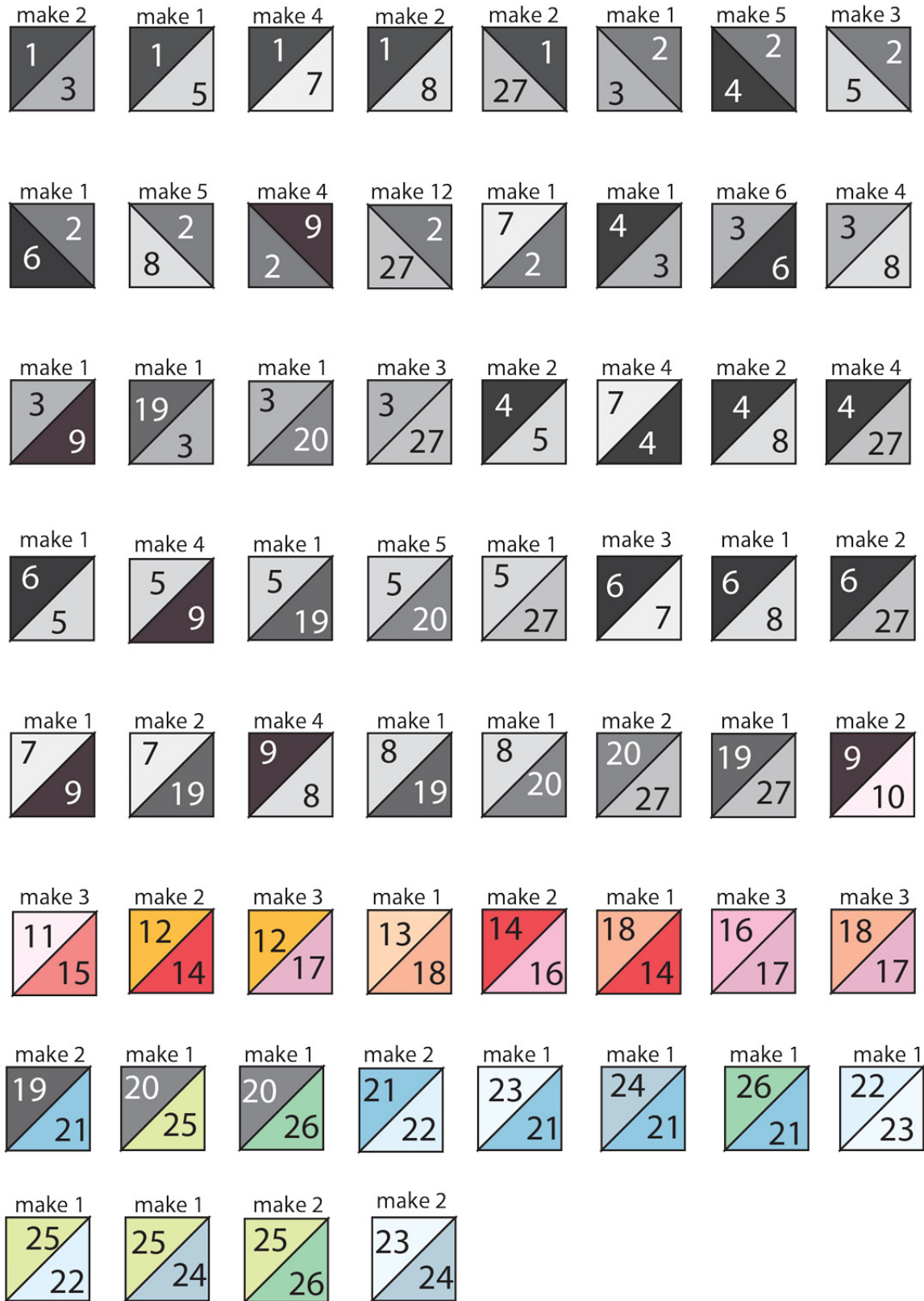
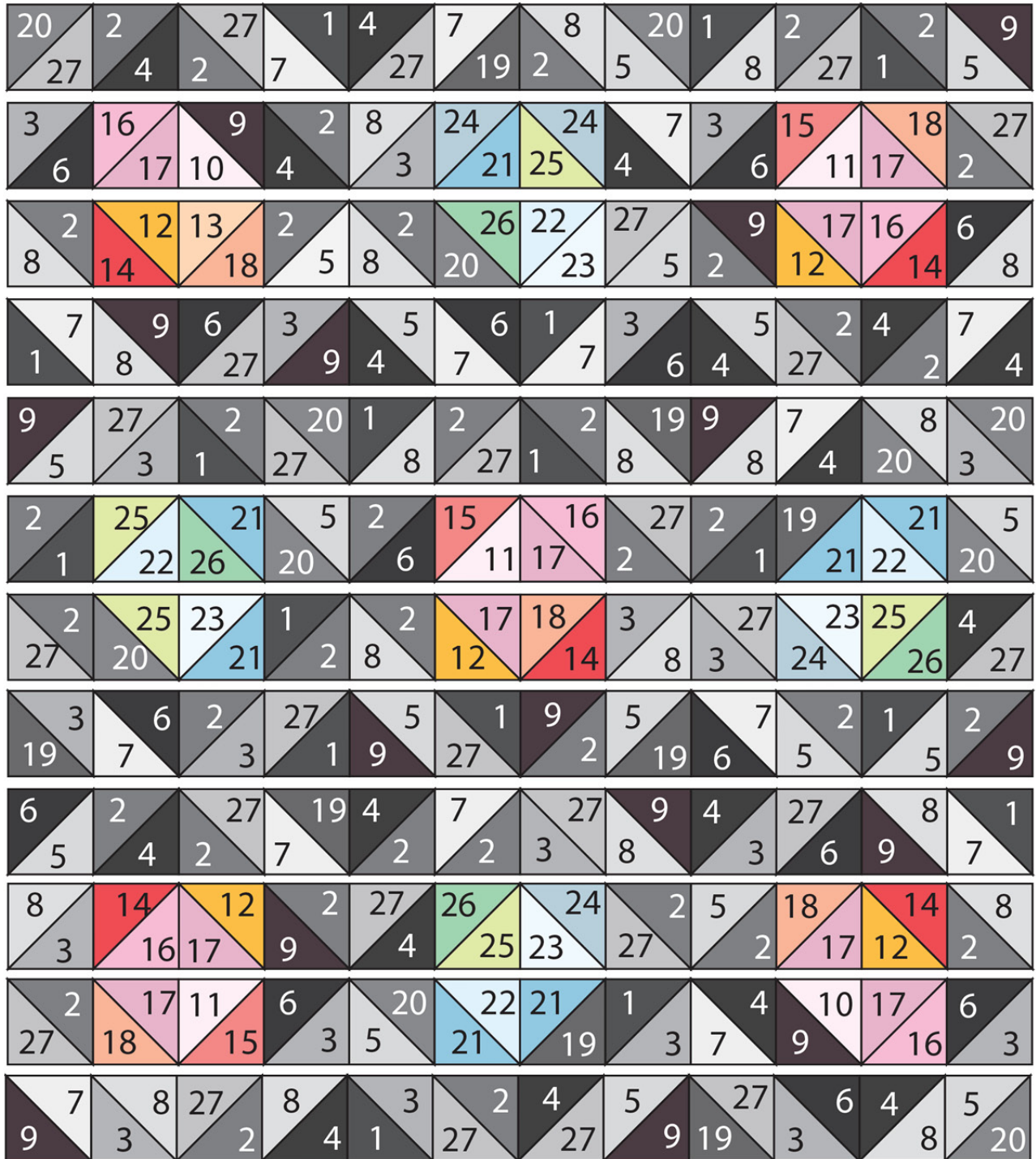


Fig. 4



# Here and There Squares



Quilt Layout