

Tie Tips

Designed by Whistler Studios
Featuring the Shirt & Tie Collection by Whistler Studios
Size: 40" x 40"



Check www.windhamfabrics.com Free Project section to see if there are any pattern updates before you start your quilt project



WINDHAM FABRICS

812 Jersey Ave ~ Jersey City, NJ 07310 ~ 201.659.0444 ~ FAX: 201.659.9719
www.windhamfabrics.com email: retail@windhamfabrics.com

Tie Tips

Page 2



40419-1 Charcoal



40419-2 Red



40419-3 Purple



40419-4 Yellow



40419-5 Olive



40419-6 Green



40419-7 Blue



40420-1 Charcoal



40420-10 Coral



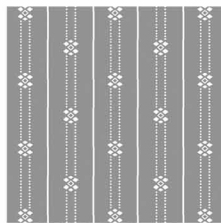
40420-5 Olive



40420-8 Raspberry



40420-9 Turquoise



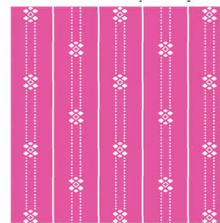
40421-11 Grey



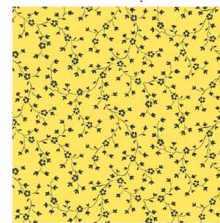
40421-2 Red



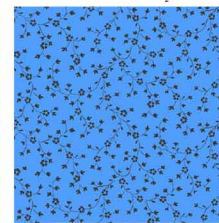
40421-6 Green



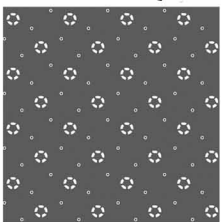
40421-8 Raspberry



40422-4 Yellow



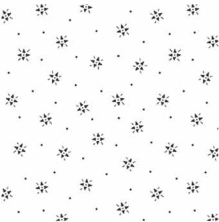
40422-7 Blue



40423-1 Charcoal



40423-9 Turquoise



40424-11 Grey



40424-4 Yellow



40424-6 Green



40425-2 Red



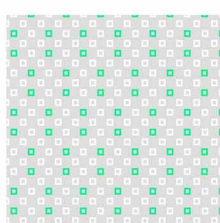
40425-5 Olive



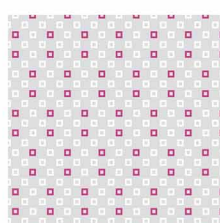
40425-9 Turquoise



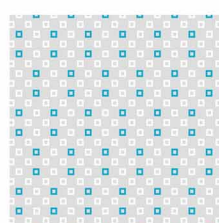
40426-4 Yellow



40426-6 Green



40426-8 Raspberry



40426-9 Turquoise

MATERIALS:

Fat Quarter bundle of Shirt & Tie collection (30 skus)

3/8 yard of 40421-11 Grey

1 yard of 40419-7 Blue, includes binding

1-1/4 yards of backing

44" x 44" piece of batting

Thread to match each desired tie tip fabric for appliqué

Fusible Web



WINDHAM FABRICS

Tie Tips

Page 3

PREPARATION:

Trace (16) copies of the tie tip template to the paper side of the fusible web. Cut out each tie tip 1/4" beyond the drawn line. Following manufacturer's instructions, iron the fusible web tie tips to the wrong side of the desired prints (see Cutting). Cut out on the drawn line.

CUTTING:

FAT QUARTERS:

From the Red, Pink, Purple, and Yellow dark prints, cut a total of:

(22) 2-1/2" x 4-1/2" rectangles

(7) Tie Tips (see Preparation)

From the Red, Pink, Purple, and Yellow light prints, cut a total of:

(8) 2-1/2" x 4-1/2" rectangles

(6) 6-1/2" x 6-1/2" squares

From the Blue and Green dark prints, cut a total of:

(22) 2-1/2" x 4-1/2" rectangles

(7) Tie Tips (see Preparation)

From the Blue and Green light prints, cut a total of:

(8) 2-1/2" x 4-1/2" rectangles

(6) 6-1/2" x 6-1/2" squares

From the Black prints, cut a total of:

(2) Tie Tips (see Preparation)

From the Grey prints, cut a total of:

(4) 6-1/2" x 6-1/2" squares

From 40421-11 Grey, cut:

(4) 1-1/2" x 4-1/2" strips

(2) 1-1/2" x 30-1/2" strips

(2) 1-1/2" x 40-1/2" strips

From 40419-7 Blue, cut:

(12) 1-1/2" x 6-1/2" strips

(3) 1-1/2" x 27-1/2" strips

(2) 2" x 27-1/2" strips

(2) 2" x 30-1/2" strips

(5) 2-1/2" x 42" binding strips

INSTRUCTIONS:

Making the Blocks:

1. Place (1) tie tip piece in the center of (1) contrasting 6-1/2" x 6-1/2" light or grey print square, aligning the top straight edge of the tie tip with the top of the square as shown. Diagram 1

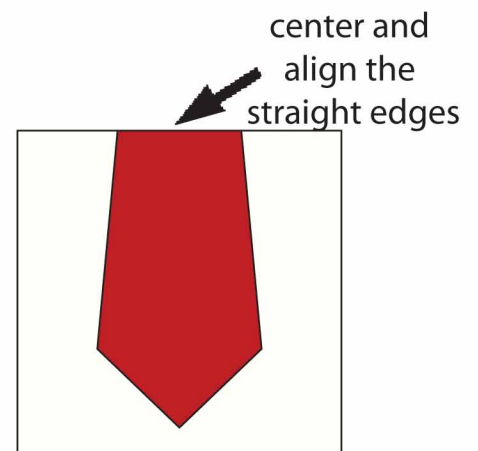


Diagram 1



WINDHAM FABRICS

Tie Tips

Page 4

- Following manufacturer's instructions, remove the backing from the fusible web tie tip piece and iron to the right side of the square to secure.
- Using matching thread and a small satin or blanket stitch, appliqué around the outer edge of the tie tip to complete a 6-1/2" x 6-1/2" tie block. Make 16 blocks. Diagram 2

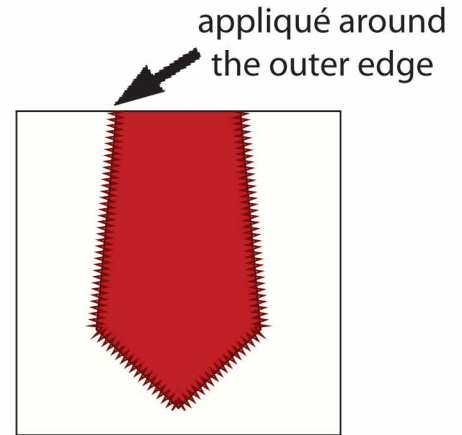


Diagram 2

Assembling the Quilt Top:

- Lay out (16) tie blocks, alternating with (12) 1-1/2" x 6-1/2" 40419-7 Blue strips in 4 rows as shown. (Note: In the quilt image, blocks are laid out progressing from black to blue to green to purple to pink to red to yellow.)
- Sew the blocks and strips together to make a block row. Make 4 block rows.
- Sew the (4) block rows, alternating with (3) 1-1/2" x 27-1/2" 40419-7 Blue sashing strips to complete a 27-1/2" x 27-1/2" quilt top.

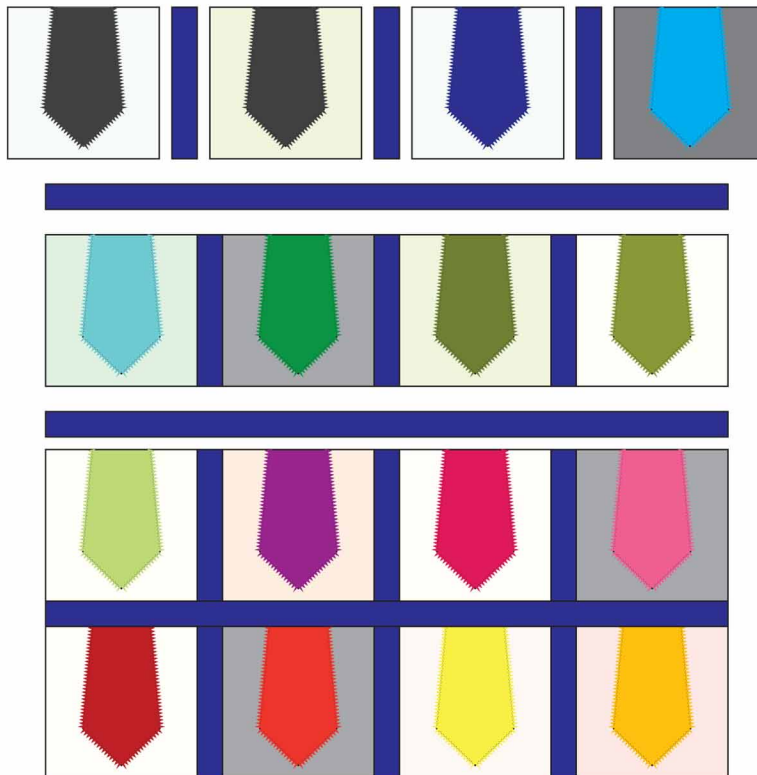


Diagram 3

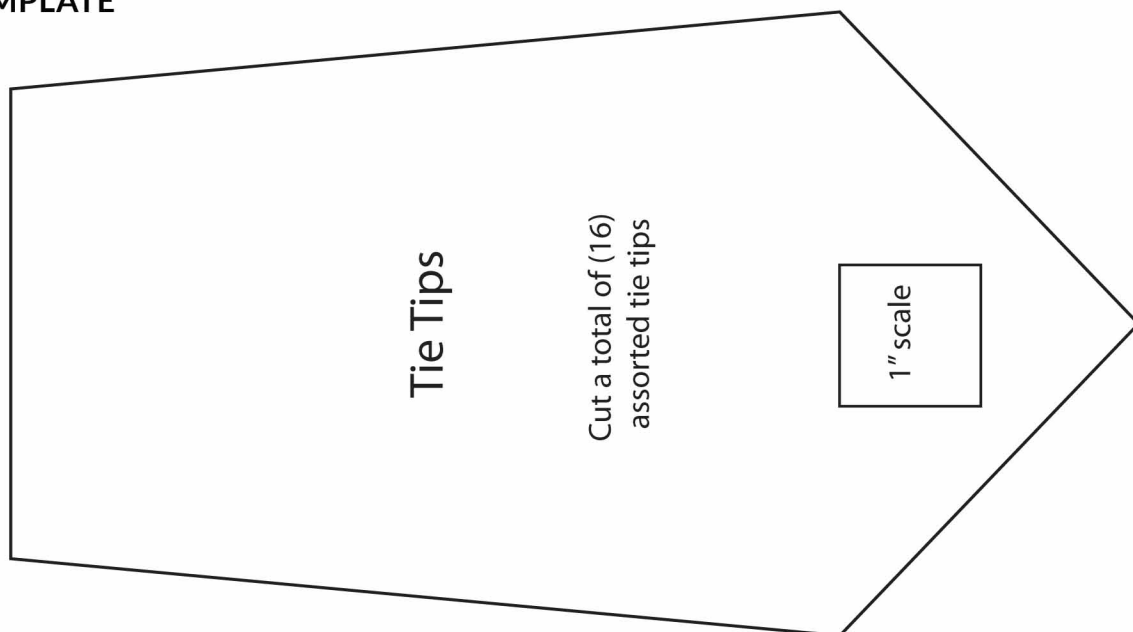
Tie Tips

Page 5

Adding the Borders:

7. Sew (2) 2" x 27-1/2" 40419-7 Blue strips to opposite sides of the quilt. Sew (2) 2" x 30-1/2" 40419-7 Blue strips to the top and bottom of the quilt.
8. Sew (11) 2-1/2" x 4-1/2" red, pink, purple, and yellow dark rectangles and (4) 2-1/2" x 4-1/2" red, pink, purple, and yellow light rectangles together randomly to make a 4-1/2" x 30-1/2" border panel A. Make 2.
9. Sew (11) 2-1/2" x 4-1/2" blue and green dark rectangles and (4) 2-1/2" x 4-1/2" blue and green light rectangles together randomly to make a 4-1/2" x 30-1/2" border panel B. Make 2.
10. Sew a 1-1/2" x 30-1/2" 40421-11 Grey strip to the long side of 1 border panel A and 1 border panel B.
11. Sew the 40421-11 Grey strip side of border panel A to the left side of the quilt center. Sew the 40421-11 Grey strip side of border panel B to the right side of the quilt center.
12. Sew a 1-1/2" x 40-1/2" 40421-11 Grey strip to the top and bottom of the quilt center.
13. Sew the remaining border panel A between (2) 1-1/2" x 4-1/2" 40421-11 Grey strips. Sew the new panel A between (2) 4-1/2" x 4-1/2" 40419-7 Blue squares to make a bottom border. Sew to the bottom of the quilt.
14. Sew the remaining border panel B between (2) 1-1/2" x 4-1/2" 40421-11 Grey strips. Sew the new panel B between (2) 4-1/2" x 4-1/2" 40419-7 Blue squares to make a top border. Sew to the top of the quilt.

TEMPLATE



WINDHAM FABRICS

Tie Tips

Page 6

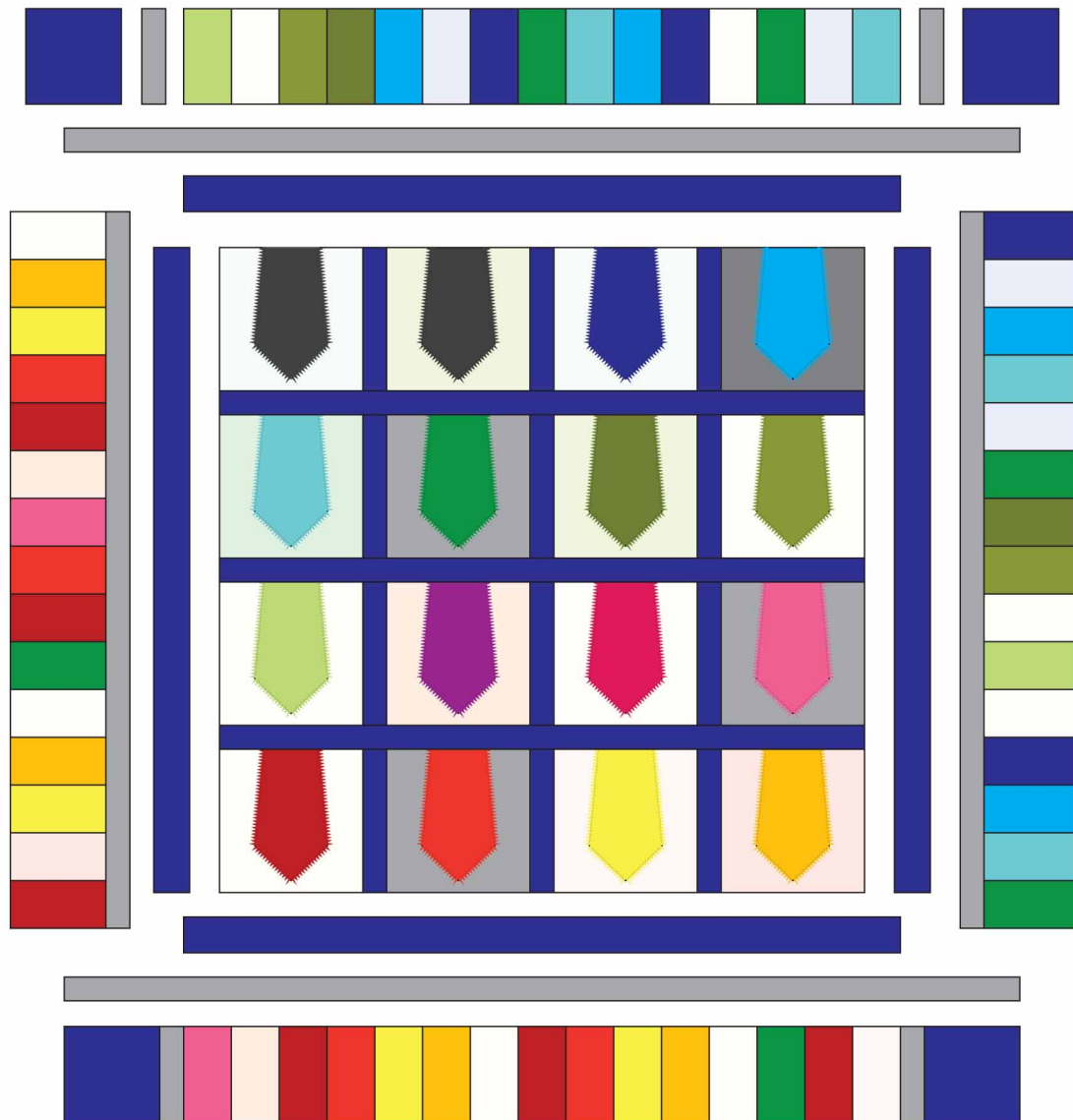


Diagram 4

Finishing:

15. Cut the backing fabric to measure 44" x 44".
16. Layer the backing, batting and quilt top and quilt as desired. Bind, using the (4) 2-1/2" x 42" 40419-7 Blue binding strips.

Be sure to visit www.windhamfabrics.com to see the complete collection
and to download other Free Projects