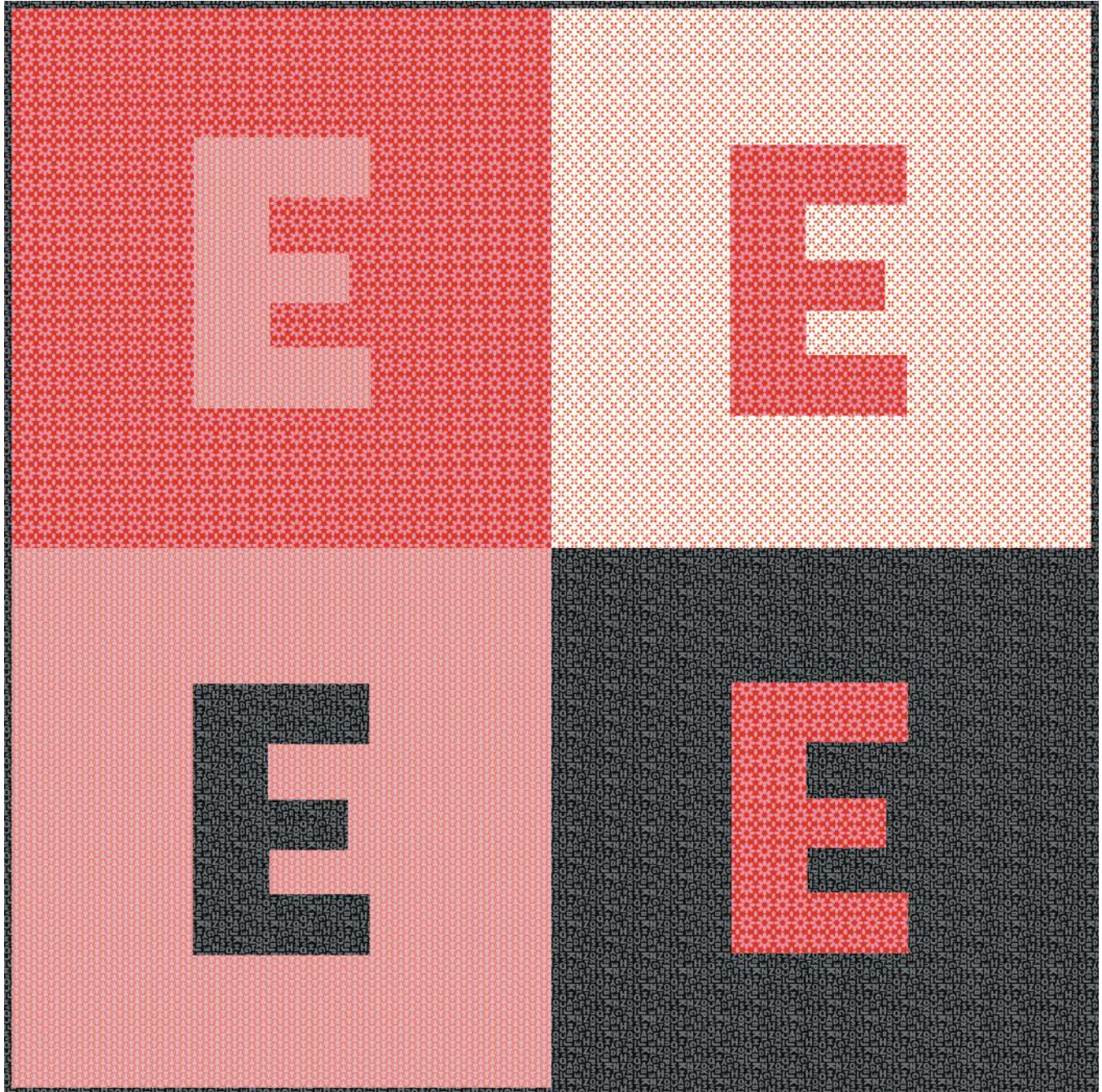


Uppercase - Baby Blanket

Designed by Janine Vangool
Featuring the Uppercase Collection by Janine Vangool
Size: 36" x 36"



Check www.windhamfabrics.com Free Project section to see if there are any pattern updates before you start your quilt project



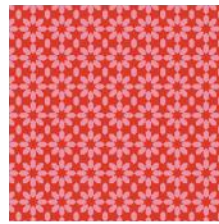
812 Jersey Ave – Jersey City, NJ 07310 – 201.659.0444 ~ FAX: 201.659.9719
www.windhamfabrics.com email: retail@windhamfabrics.com

Uppercase - Baby Blanket

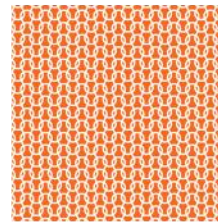
Page 2

Estimated Fabric Requirements:

- $\frac{2}{3}$ yard – 41824-4 Pink
- $\frac{2}{3}$ yard – 41821-2 Orange
- 1 yard – 41827-5 Black
- $\frac{2}{3}$ yard – 41822-2 Orange
- 1 $\frac{1}{2}$ yards – 41826-4 Pink



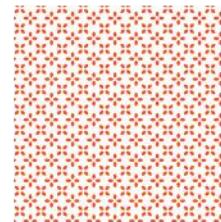
41824-4 Pink



41821-2 Orange



41827-5 Black



41822-2 Orange



41826-4 Pink

Cutting Instructions:

Fabric A: Star Flower – Pink

- Cut one 18 $\frac{1}{2}$ " square.
- See instructions to cut two Letter E's.

Fabric B: Loops – Orange

- Cut one 18 $\frac{1}{2}$ " square.
- See instructions to cut one Letter E.

Fabric C: Letters – Black

- Cut one 18 $\frac{1}{2}$ " square.
- See instructions to cut one Letter E.
- Cut four 2 $\frac{1}{2}$ " x WOF strips for the binding.

Fabric D: Petals – Orange

- Cut one 18 $\frac{1}{2}$ " x WOF square.

Backing: Lattice – Pink

- Cut one 44" x WOF strip for the back.

You will also need:

- Fusible web



WINDHAM FABRICS

www.windhamfabrics.com

Uppercase - Baby Blanket

Page 3

Quilt Assembly – Refer to Figure 5 while assembling the quilt top:

1. Following the manufacturer's instructions, trace the listed number of each template onto the paper side of the fusible web. Roughly cut out each template about 1/8" outside the drawn lines.
2. Press each template onto the wrong side of the fabrics as listed on the templates. Cut out each template on the drawn lines.
3. Refer to the quilt photo to arrange and press the Fabric B Letter E onto the 18 1/2" Fabric A square to make one AB block (Fig. 1).

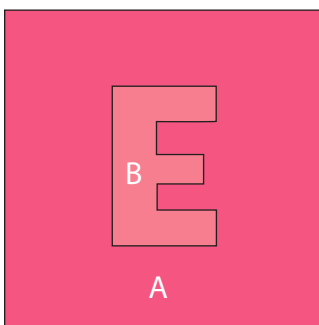


Fig. 1

4. Follow Figures 2-4 and make one DA block, one BC block and one CA block.

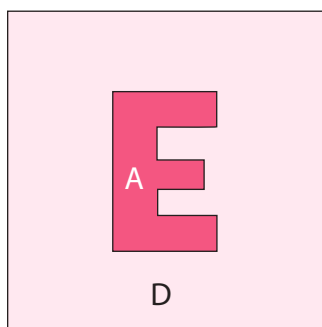


Fig. 2

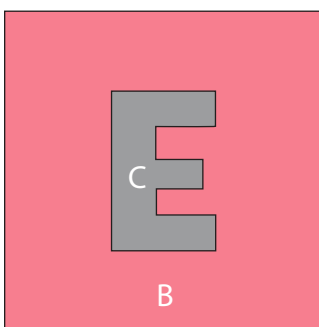


Fig. 3

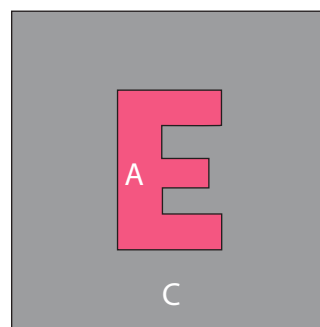


Fig. 4

5. Finish the raw edges of each shape with a decorative stitch such as a buttonhole or satin stitch to complete the four appliqué blocks.
6. Sew the four appliqué blocks together in a two by two arrangement to make the quilt top.
7. Layer and quilt as desired.
8. Sew the four 2 1/2" x WOF Fabric C strips together, end to end with 45-degree seams, to make the binding. Fold this long strip in half, lengthwise with wrong sides together, and press.
9. Bind as desired.

Uppercase - Baby Blanket

Page 4

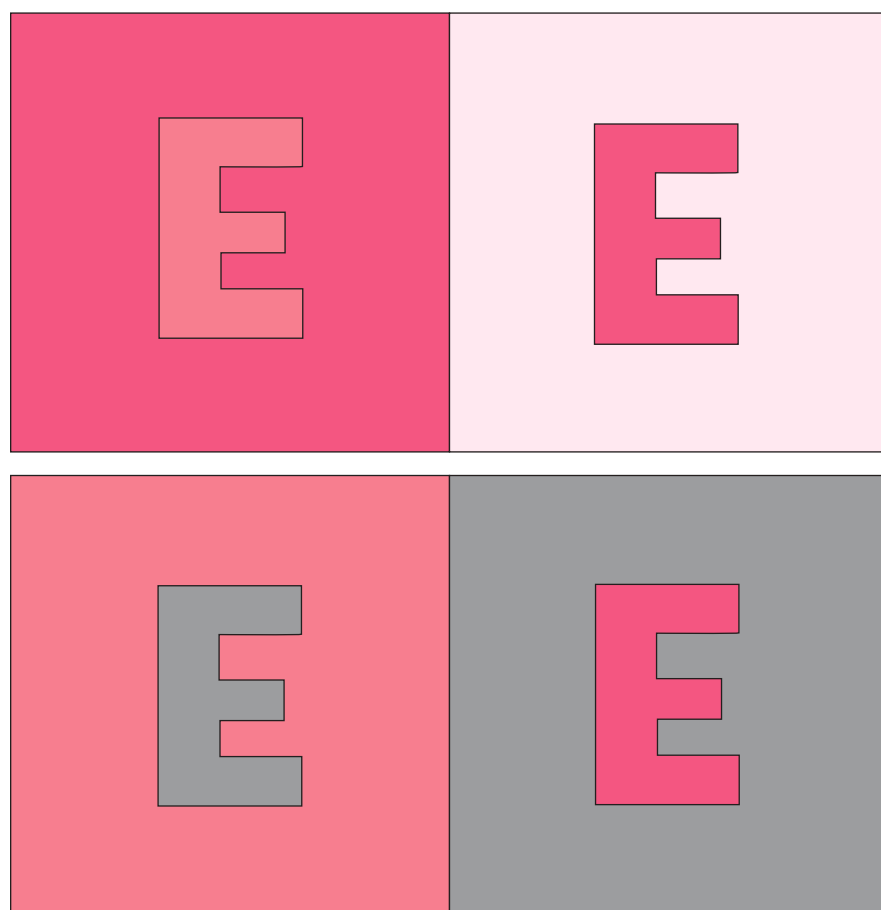
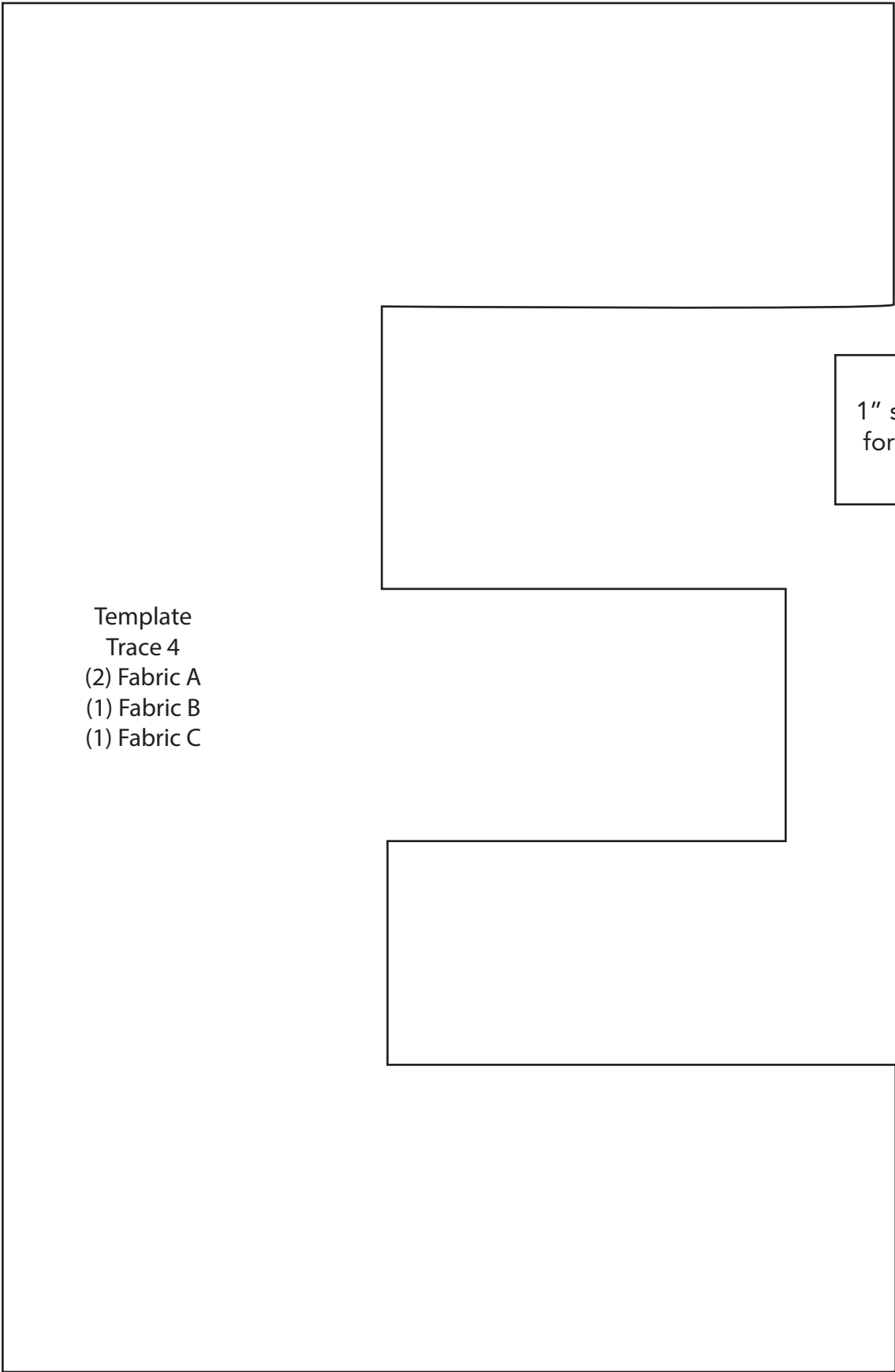


Fig. 5



WINDHAM FABRICS

www.windhamfabrics.com



1" square
for scale

Template
Trace 4
(2) Fabric A
(1) Fabric B
(1) Fabric C

**Be sure to visit www.windhamfabrics.com to see the complete collection
and to download this and other FREE Projects**