

Windham Designer Face Masks

featuring The Designer Face Mask Panel

FOUR SIZE OPTIONS AVAILABLE

FREE
PROJECT



PLEASE NOTE: BEFORE MAKING YOUR PROJECT, CHECK FOR ANY PATTERN UPDATES AT WINDHAMFABRICS.COM'S FREE PROJECTS SECTION.



Windham Designer Face Masks

MAKING THE MASK

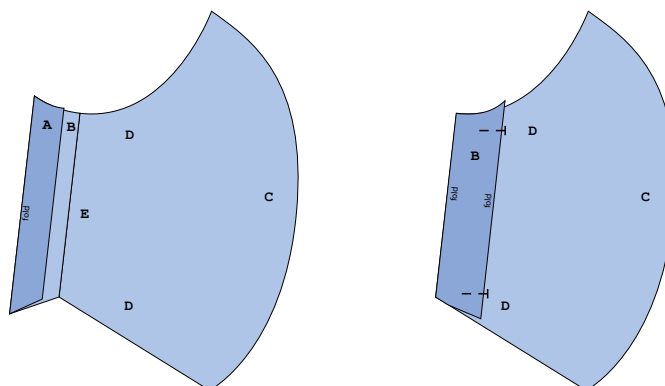
Note: You'll need (2) elastic ties per mask. See p. 3 for sizing information.

1. Pre-wash fabric panel before cutting. Choose your face mask pieces from the panel. You need (1) each left and right-facing pieces for Side 1. Repeat for Side 2. Using the templates at the bottom of the panel or the template on p. 4, you may also choose solids or other prints for your mask pieces. Pick a thread color that will suit both sides.



2. Choose the size you wish to make and cut along the edge of the mask shapes exactly. Seam allowance is included.

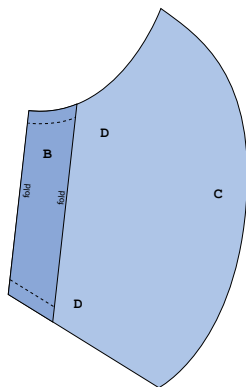
3. Lay each piece with wrong side up. Fold along section A and press. Then fold along section B and press, pinning folds to secure. Repeat with all (4) pieces.



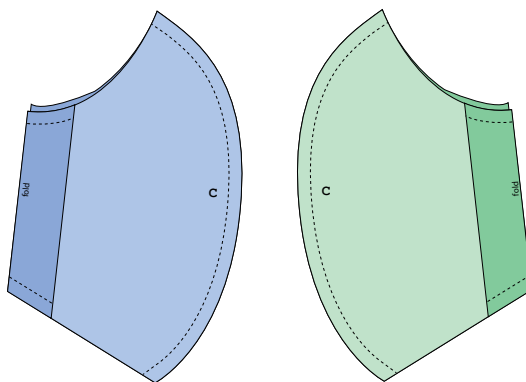


Windham Designer Face Masks

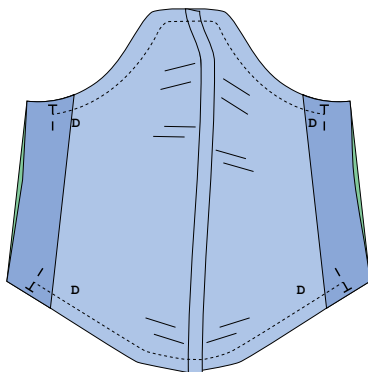
Tip: To eliminate the possibility of fraying, stitch the top and bottom edge of each folded A/B flap using a $\frac{1}{4}$ " seam.



4. Place (1) each left and right-facing pieces right sides together, nesting seam allowances, and sew along sewing line C, using a $\frac{1}{4}$ " seam allowance. This will be Side 1 of your mask. Repeat with the remaining two pieces for Side 2. Press seams to one side.



5. Pin or mark where the D sewing line should stop on each side. Place Sides 1 and 2 together, pin, and start sewing at the D mark and then stop at the opposite D mark. Note that you will stitch over just the edge of the folded A/B flap. Backstitch at both ends. You will have $\frac{1}{2}$ " open at all four corners of the mask.

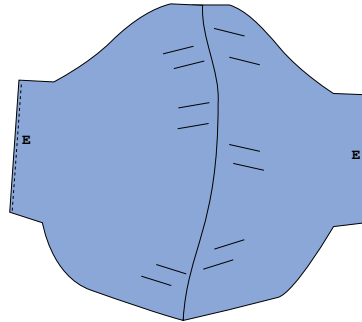


6. Use the opening on the sides to turn your mask right side out. Press all the edges.

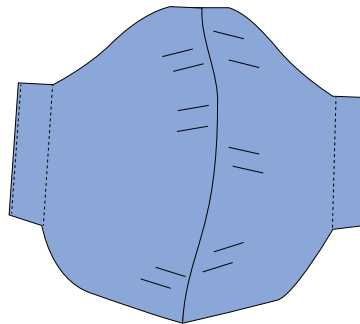


Windham Designer Face Masks

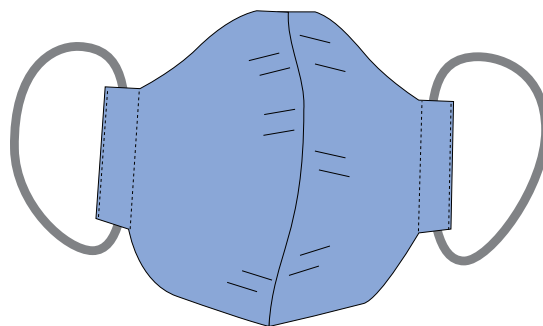
7. Stitch along section E on both the left and right sides at the very edge of the mask.



8. Stitch a second line 1/2" from the left and right sides of the mask to create a channel for the elastic or ties.



9. Guide a narrow fabric tie or elastic through each channel created in Step 8 in a length that will go around your ears or head. Measure to make sure the mask fits properly. Either sew the elastic ends together or tie the ends together in a knot and hide the connection in the channel for easy adjustment later.



Ear loop sizing (2 per mask): Approximate maximum elastic tie sizes are as follows:
Cut down for your best fit after trying on the mask.

CHILD: 11-1/2" long
MEDIUM: 14-1/2" long

SMALL: 13" long
LARGE: 16" long



Windham Designer Face Masks

Mask Template

Print at 100%.

Select desired size and cut (1) and (1) reversed for both outer and lining fabrics.

